



ACO Product catalogue

ACO Brickslot

- **Discreet drainage for an architectural site**



Hidden and effective

Solution advantages

- Enforced top of the slot
- Easy maintenance and access
- Easy installation
- Round distant pieces in a slot (prevent blockage)
- May be installed with any paving material
- Range of gratings for discreet line drainage
- Totally secured system
- Fast removal of surface water
- **Fully EN 1433 tested and certified**



Brickslot access unit

Maintenance access unit for easy cleaning and inspection of the system.



A standardised design with a heelguard 10 mm offset drainage inlet. ACO Brickslot is a subtle and unobtrusive grating which can be used to complement discreet drainage applications when combined with an ACO DRAIN channel. Compatible with most paving materials, the vertical sides of the grating enable pavements to be laid directly against the unit's edge.

Once installed the system is totally secure and resistant to vandalism or loose grates making it suitable for applications at schools and in playgrounds where grating removal can become a hazard.

ACO Brickslot grating is available in galvanised and stainless steel. The system includes an ACO Brickslot access unit to ensure easy maintenance and access to the drainage system. The system is suitable up to Load Class D400 applications in accordance with standard EN 1433 (This product is not suitable for the carriageways of public roads or motorways.)

Content

Product line overview	page
<i>Benefits</i>	2
<i>Professional system</i>	4
<i>Semi-professional system</i>	5
<i>Fields of application</i>	6
<i>Material</i>	6
<i>Technical features</i>	6
<i>Installation</i>	7
Technical Data	
ACO DRAIN N100	
<i>Load class B 125</i>	8
<i>Load class C 250</i>	8
ACO DRAIN V100/M100D/XD100	
<i>Load class C 250</i>	9
<i>Load class D 400</i>	9
ACO DRAIN V150/M100DúXD100	
<i>Load class C 250</i>	10
<i>Load class D 400</i>	10
ACO DRAIN V200/M200D/XD200	
<i>Load class B 125</i>	11
<i>Load class C 250</i>	11
<i>Load class D 400</i>	12
Certification	12



ACO Brickslot system has a range of gratings designed for installations which require discreet slot drainage.

Depending on the flow rate, load class and length of the drainage line it is possible to use ACO Brickslot grating for different types of ACO DRAIN channels

produced from polymer concrete or a composite material. ACO Brickslots are compatible with the following ACO DRAIN channel bodies, which

are mostly used in Europe and meet European Standards requirements. The choice of the channel depends on specific conditions.

Product line

Professional system

- Stainless steel / Galvanised steel
- Applications up to load class D400



Stainless steel

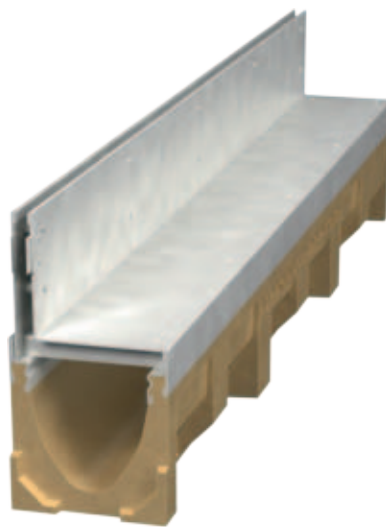


Galvanised steel

Channels for professional systems with a V profile for better flow-rate and self cleaning effect are made from polymer concrete or composite material and have protective edges.



ACO MultiDrain™ (UK)



ACO DRAIN® Multiline®

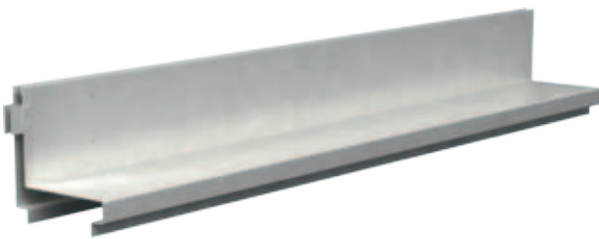


ACO XtraDrain

Product line

Semi-professional system

- Stainless steel / Galvanised steel
- Applications up to load class C250



Stainless steel



Galvanised steel

Channels for semi-professional systems with a classic design are made from polymer concrete without protective edges.



ACO DRAIN® N100 (CZ)



ACO Gala G100

Fields of application

Ideal for use against buildings facades, for level threshold drainage and pedestrian areas thanks to narrow heelsafe slot geometry.
NOT for carriageways of public roads or motorways.

Professional solution designed for:

- Commercial developments
- Public areas
- Car parks
- Pedestrian zones
- Retail developments



Semi-professional solution designed for:

- Light duty applications
- Landscaping
- Residential areas
- Drive ways



Material solution

Stainless steel aesthetics and durability

Recommended for use in all applications where high corrosion resistance is required.



Hot dip galvanised steel economical solution

Recommended for use in all standard applications.



Technical information

Hot-dip galvanised and stainless steel solution (grade 304)

Load class up to D400

Slot width 10 mm (heelguard solution)

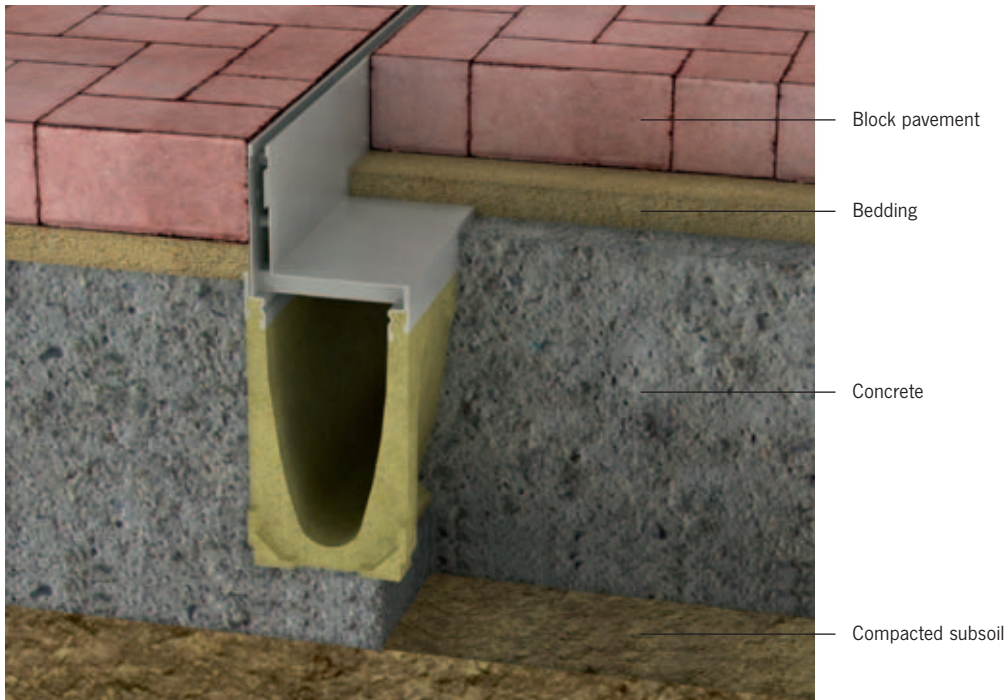
Compatible with most types of paving material up to a maximum depth of 150 mm depth

Solution for discreet and effective drainage when combined with an ACO DRAIN channel

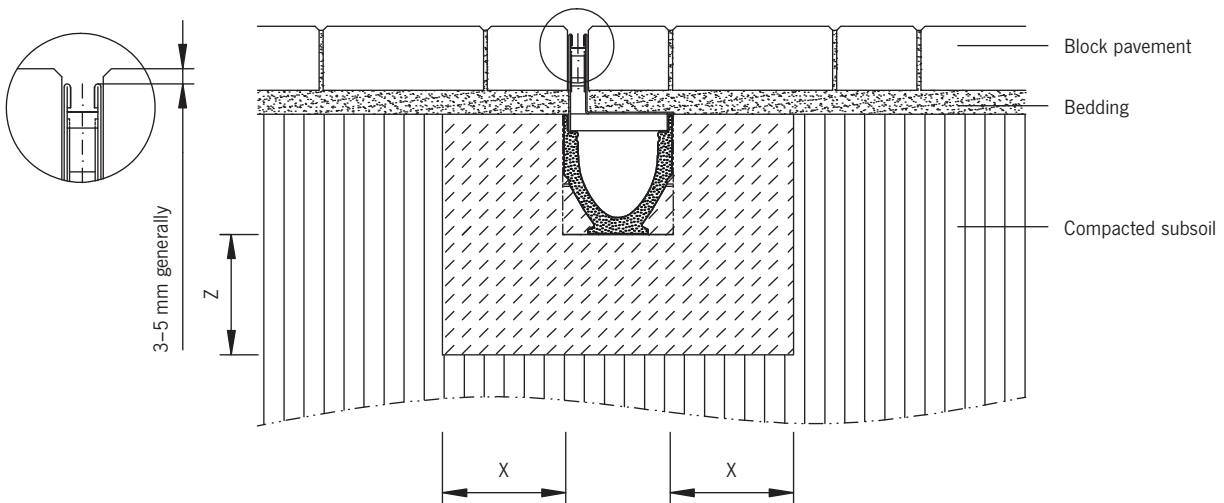
Installation

For correct and safe installation the ACO installation recommendations must be followed. The customer should ensure that the minimum

dimensions shown are suitable for the existing ground conditions. Engineering advice may be necessary.



Installation detail



Load class	EN 1433	A15	B 125	C 250	D 400
Grade of concrete	EN 1433	C 12/15	C 25/30	C 25/30	C 25/30
Minimum dimensions [cm]	x	≥ 10	≥ 10	≥ 15	≥ 20
	z	≥ 10	≥ 10	≥ 15	≥ 20



Technical data

The ACO Brickslot gratings are listed in the charts below and are sold separately to the channel units.

The access unit is positioned within the channel; it has a removable tray section which is lifted out of the frame by a lifting tool to gain access to system.

The access unit is 0.5 m in length and has a heelguard 10 mm off set drainage inlet.

ACO DRAIN N100

Brickslot grating load class B 125



	Length* [cm]	Width [cm]	Height* [cm]	Intake area [cm ² /m]	Weight [kg]	Order No.
Brickslot grating galvanised steel						
Brickslot grating 100 cm	100	13	10.5	100	5.5	406921
Brickslot grating 50 cm	50	13	10.5	100	2.8	406922
Brickslot access unit 50 cm	50	13	10.5	100	4.3	406923
Brickslot grating stainless steel						
Brickslot grating 100 cm	100	13	10.5	100	5.5	406924
Brickslot grating 50 cm	50	13	10.5	100	2.8	406925
Brickslot access unit 50 cm	50	13	10.5	100	4.3	406926

*overall diments

Brickslot grating load class C 250



	Length* [cm]	Width [cm]	Height* [cm]	Intake area [cm ² /m]	Weight [kg]	Order No.
Brickslot grating galvanised steel						
Brickslot grating 100 cm	100	13	10.5	100	7	406927
Brickslot grating 50 cm	50	13	10.5	100	3.5	406928
Brickslot access unit 50 cm	50	13	10.5	100	5.6	406929
Brickslot grating stainless steel						
Brickslot grating 100 cm	100	13	10.5	100	7	406930
Brickslot grating 50 cm	50	13	10.5	100	3.5	406931
Brickslot access unit 50 cm	50	13	10.5	100	5.6	406932

*overall dimensions

ACO DRAIN V100 / M100D / XD100

Brickslot grating load class C 250



	Length* [cm]	Width** [cm]	Height* [cm]	Intake area [cm ² /m]	Weight [kg]	Order No.
Brickslot grating galvanised steel						
Brickslot grating 100 cm	100	13.5	10.5	100	6.4	23460
Brickslot grating 50 cm	50	13.5	10.5	100	3.3	23461
Brickslot access unit 50 cm	50	13.5	10.5	100	6.4	23462
Brickslot grating 100 cm	100	13.5	15	100	8	407045
Brickslot grating 50 cm	50	13.5	15	100	4	407046
Brickslot access unit 50 cm	50	13.5	15	100	8.3	407047
Brickslot grating stainless steel						
Brickslot grating 100 cm	100	13.5	10.5	100	6.4	23470
Brickslot grating 50 cm	50	13.5	10.5	100	3.3	23471
Brickslot access unit 50 cm	50	13.5	10.5	100	6.4	23472
Brickslot grating 100 cm	100	13.5	15	100	8	407048
Brickslot grating 50 cm	50	13.5	15	100	4	407049
Brickslot access unit 50 cm	50	13.5	15	100	8.3	407050

*overall dimensions; **overall dimensions channel included

Brickslot grating load class D 400



	Length* [cm]	Width** [cm]	Height* [cm]	Intake area [cm ² /m]	Weight [kg]	Order No.
Brickslot grating galvanised steel						
Brickslot grating 100 cm	100	13.5	10.5	100	6.4	23465
Brickslot grating 50 cm	50	13.5	10.5	100	3.3	23466
Brickslot access unit 50 cm	50	13.5	10.5	100	6.4	23467
Brickslot grating 100 cm	100	13.5	15	100	8	407051
Brickslot grating 50 cm	50	13.5	15	100	4	407052
Brickslot access unit 50 cm	50	13.5	15	100	8.3	407053
Brickslot grating stainless steel						
Brickslot grating 100 cm	100	13.5	10.5	100	6.4	23475
Brickslot grating 50 cm	50	13.5	10.5	100	3.3	23476
Brickslot access unit 50 cm	50	13.5	10.5	100	6.4	23477
Brickslot grating 100 cm	100	13.5	15	100	8	407054
Brickslot grating 50 cm	50	13.5	15	100	4	407055
Brickslot access unit 50 cm	50	13.5	15	100	8.3	407056

*overall dimensions; **overall dimensions channel included

ACO DRAIN V150 / M150D / XD150

Brickslot grating load class C250



	Length* [cm]	Width** [cm]	Height* [cm]	Intake area [cm ² /m]	Weight [kg]	Order No.
Brickslot grating galvanised steel						
Brickslot grating 100 cm	100	18.5	10.5	100	9.3	23170
Brickslot grating 50 cm	50	18.5	10.5	100	4.7	23171
Brickslot access unit 50 cm	50	18.5	10.5	100	7.9	23172
Brickslot grating 100 cm	100	18.5	15	100	10.5	407057
Brickslot grating 50 cm	50	18.5	15	100	6	407058
Brickslot access unit 50 cm	50	18.5	15	100	9.2	407059
Brickslot grating stainless steel						
Brickslot grating 100 cm	100	18.5	10.5	100	9.3	23180
Brickslot grating 50 cm	50	18.5	10.5	100	4.7	23181
Brickslot access unit 50 cm	50	18.5	10.5	100	7.9	23182
Brickslot grating 100 cm	100	18.5	15	100	10.5	407060
Brickslot grating 50 cm	50	18.5	15	100	6	407061
Brickslot access unit 50 cm	50	18.5	15	100	9.2	407062

*overall dimensions; **overall dimensions channel included

Brickslot grating load class D400



	Length* [cm]	Width** [cm]	Height* [cm]	Intake area [cm ² /m]	Weight [kg]	Order No.
Brickslot grating galvanised steel						
Brickslot grating 100 cm	100	18.5	10.5	100	9.3	23175
Brickslot grating 50 cm	50	18.5	10.5	100	4.7	23176
Brickslot access unit 50 cm	50	18.5	10.5	100	7.9	23177
Brickslot grating 100 cm	100	18.5	15	100	10.5	407063
Brickslot grating 50 cm	50	18.5	15	100	6	407064
Brickslot access unit 50 cm	50	18.5	15	100	9.2	407065
Brickslot grating stainless steel						
Brickslot grating 100 cm	100	18.5	10.5	100	9.3	23185
Brickslot grating 50 cm	50	18.5	10.5	100	4.7	23186
Brickslot access unit 50 cm	50	18.5	10.5	100	7.9	23187
Brickslot grating 100 cm	100	18.5	15	100	10.5	407066
Brickslot grating 50 cm	50	18.5	15	100	6	407067
Brickslot access unit 50 cm	50	18.5	15	100	9.2	407068

*overall dimensions; **overall dimensions channel included

ACO DRAIN V200 / M200D / XD200

Brickslot grating load class B 125



	Length* [cm]	Width** [cm]	Height* [cm]	Intake area [cm ² /m]	Weight [kg]	Order No.
Brickslot grating galvanised steel						
Brickslot grating 100 cm	100	23.5	10.5	100	10.9	407030
Brickslot grating 50 cm	50	23.5	10.5	100	5.9	407031
Brickslot access unit 50 cm	50	23.5	10.5	100	7.9	407032
Brickslot grating 100 cm	100	23.5	15	100	11.4	407069
Brickslot grating 50 cm	50	23.5	15	100	6	407070
Brickslot access unit 50 cm	50	23.5	15	100	8.6	407071
Brickslot grating stainless steel						
Brickslot grating 100 cm	100	23.5	10.5	100	10.9	407033
Brickslot grating 50 cm	50	23.5	10.5	100	5.9	407034
Brickslot access unit 50 cm	50	23.5	10.5	100	7.9	407035
Brickslot grating 100 cm	100	23.5	15	100	11.4	407072
Brickslot grating 50 cm	50	23.5	15	100	6	407073
Brickslot access unit 50 cm	50	23.5	15	100	8.6	407074

*overall dimensions; **overall dimensions channel included

Brickslot grating load class C 250



	Length* [cm]	Width** [cm]	Height* [cm]	Intake area [cm ² /m]	Weight [kg]	Order No.
Brickslot grating galvanised steel						
Brickslot grating 100 cm	100	23.5	10.5	100	12.3	407036
Brickslot grating 50 cm	50	23.5	10.5	100	6.4	407037
Brickslot access unit 50 cm	50	23.5	10.5	100	8.8	407038
Brickslot grating 100 cm	100	23.5	15	100	12.8	407075
Brickslot grating 50 cm	50	23.5	15	100	6.7	407076
Brickslot access unit 50 cm	50	23.5	15	100	10.3	407077
Brickslot grating stainless steel						
Brickslot grating 100 cm	100	23.5	10.5	100	12.3	407039
Brickslot grating 50 cm	50	23.5	10.5	100	6.4	407040
Brickslot access unit 50 cm	50	23.5	10.5	100	8.8	407041
Brickslot grating 100 cm	100	23.5	15	100	12.8	407078
Brickslot grating 50 cm	50	23.5	15	100	6.7	407079
Brickslot access unit 50 cm	50	23.5	15	100 1	0.3	407080

*overall dimensions; **overall dimensions channel included

Brickslot grating load class D 400



	Length* [cm]	Width** [cm]	Height* [cm]	Intake area [cm ² /m]	Weight [kg]	Order No.
Brickslot grating galvanised steel						
Brickslot grating 100 cm	100	23.5	10.5	100	9.8	408995
Brickslot grating 50 cm	50	23.5	10.5	100	4.8	408996
Brickslot access unit 50 cm	50	23.5	10.5	100	8.5	408997
Brickslot grating 100 cm	100	23.5	15	100	11.25	409001
Brickslot grating 50 cm	50	23.5	15	100	5.5	409002
Brickslot access unit 50 cm	50	23.5	15	100	10.5	409003
Brickslot grating stainless steel						
Brickslot grating 100 cm	100	23.5	10.5	100	9.8	408998
Brickslot grating 50 cm	50	23.5	10.5	100	4.8	408999
Brickslot access unit 50 cm	50	23.5	10.5	100	8.5	409000
Brickslot grating 100 cm	100	23.5	15	100	11.25	409004
Brickslot grating 50 cm	50	23.5	15	100	5.5	409005
Brickslot access unit 50 cm	50	23.5	15	100	10.5	409006

*overall dimensions; **overall dimensions channel included

Fully EN 1433 tested and certified

ACO Brickslot system is fully tested in accordance with current European standards. Assembly testing with sand and paving blocks simulates real installation on site. Applied testing procedure is fully corresponding to EN 1433. Available CE Declarations of Conformity are based on individual test reports issued by Technical and Test Institute for Constructions Prague, Branch Brno, Accredited Test Laboratory No. 1018.2.



Declaration of Conformity / Konformitätserklärung
Declaration de Conformité / Dichiarazione di Conformità

Manufacturer Name: ACO Industries k.s.
 Street: Havlíčkova 260
 Town: 582 22 Píbyšov
 Country: Czech Republic

Represented by the undersigned, declare that

ACO DRAIN M200D Brickslot D400

meets all the requirements of the building product code of practice 89/106/EEC.

Description of the product: Drainage channel Type M with slot cover for the collection and disposal of surface water in areas for pedestrians and/or vehicular traffic

Carrying capacity: Class D400 providing that the installation instructions are observed

Material of the channels: Polymer concrete
 Material of the gratings: Galvanized steel/Stainless steel
 Dimensions: L = 500/1000 mm; B = 235 mm; H = 370 - 470 mm

Harmonised standard used: EN 1433: 2002
 Agreement with: Appendix ZA

Notified office: Technical and Test Institute for Constructions Prague
 Accredited Test Laboratory Nr. 1018.2, branch Brno
 Test report number: 060-030958
 External supervisor: ACO-CERT, s.r.o., Kladno, Czech Republic

Píbyšov, 13th October 2009

Pavel Čížek
Operations

ACO Industries k.s.
 Havlíčkova 260, 502 22 Píbyšov
 Tel: +420 481 221 Fax: +420 481 300
 IČ: 028119428



ACO Industries k.s.,

Havlíčková 260
582 22 Příbyslav
Czech Republic

www.aco.com

The ACO Group – a strong family you can build on.

All reasonable care has been taken in compiling the information in this document. All recommendations and suggestions on the use of ACO products are made without guarantee since the conditions of use are beyond the control of the Company. It is the customer's responsibility to ensure that each product is fit for its intended purpose and that the actual conditions of use are suitable. This brochure and any advice is provided free of charge and accordingly on terms that no liability (including liability for negligence) will attach the Company or its servants or agents arising out of or in connection with or in relation to this brochure or any such advice. Any goods supplied by the Company will be supplied solely upon its standard conditions of sale, copies of which are available on request. The Company's policy of continuous product development and improvement renders specifications liable to modification. Information provided in this brochure is therefore subject to change without prior notification.