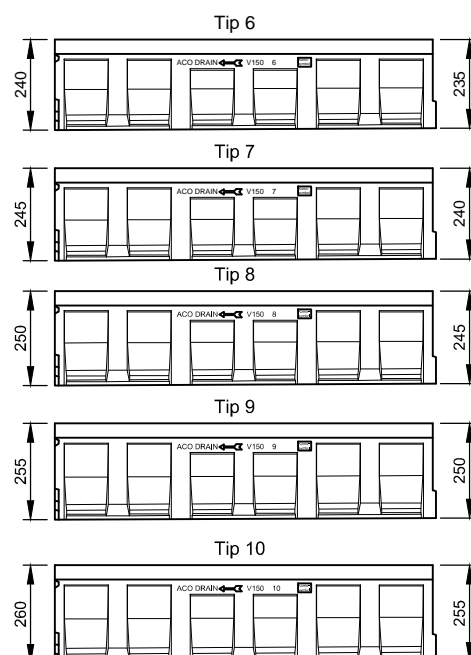
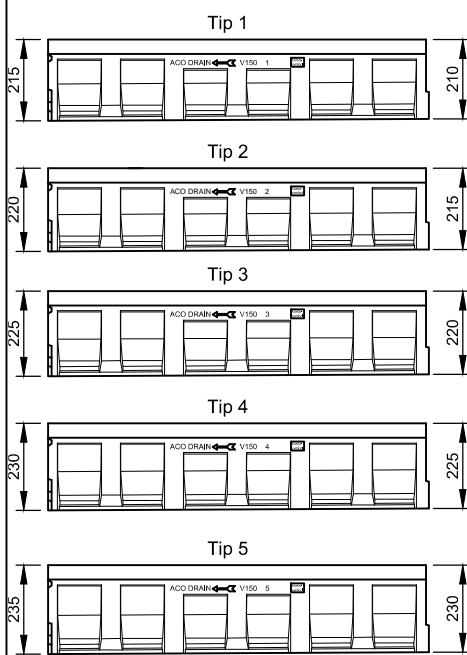
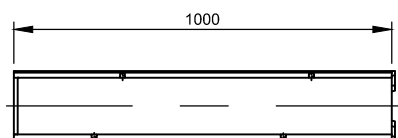


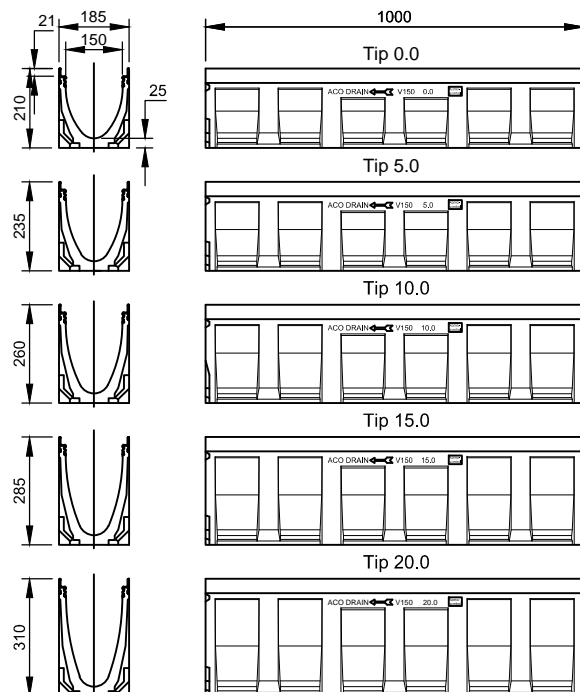
ACO Multiline V150 1m, pad dna i=0,5%



| Kanal | gr.visina početak/kraj (mm) | Materijal ruba | | |
|--------|-----------------------------------|------------------------------|--------------------------|----------------------------|
| | | pocink.čelik Broj artikla | L.gvožđe Broj artikla | nerd.čelik Broj artikla |
| tip 1 | 210 / 215 | 12701 | 12901 | 12801 |
| tip 2 | 215 / 220 | 12702 | 12902 | 12802 |
| tip 3 | 220 / 225 | 12703 | 12903 | 12803 |
| tip 4 | 225 / 230 | 12704 | 12904 | 12804 |
| tip 5 | 230 / 235 | 12705 | 12905 | 12805 |
| tip 6 | 235 / 240 | 12706 | 12906 | 12806 |
| tip 7 | 240 / 245 | 12707 | 12907 | 12807 |
| tip 8 | 245 / 250 | 12708 | 12908 | 12808 |
| tip 9 | 250 / 255 | 12709 | 12909 | 12809 |
| tip 10 | 255 / 260 | 12710 | 12910 | 12810 |

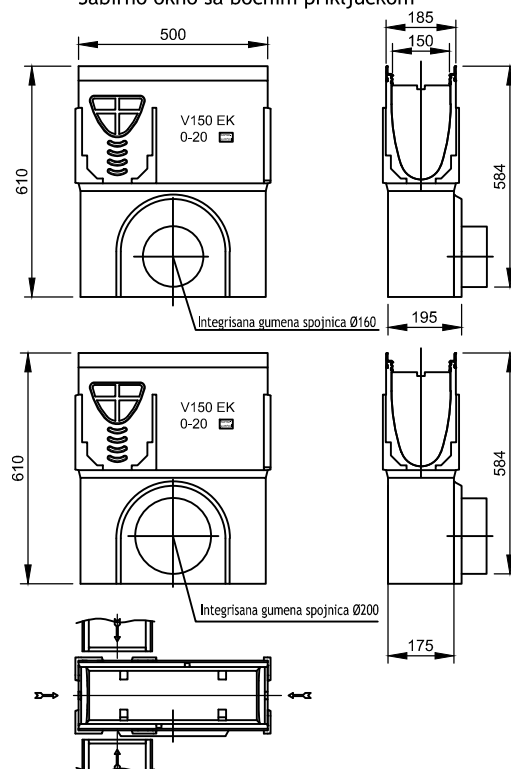


ACO Multiline V150 1m, bez pada dna



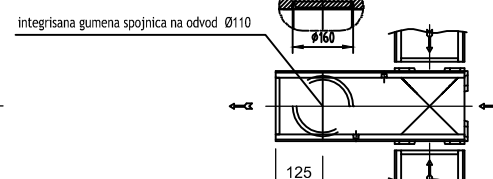
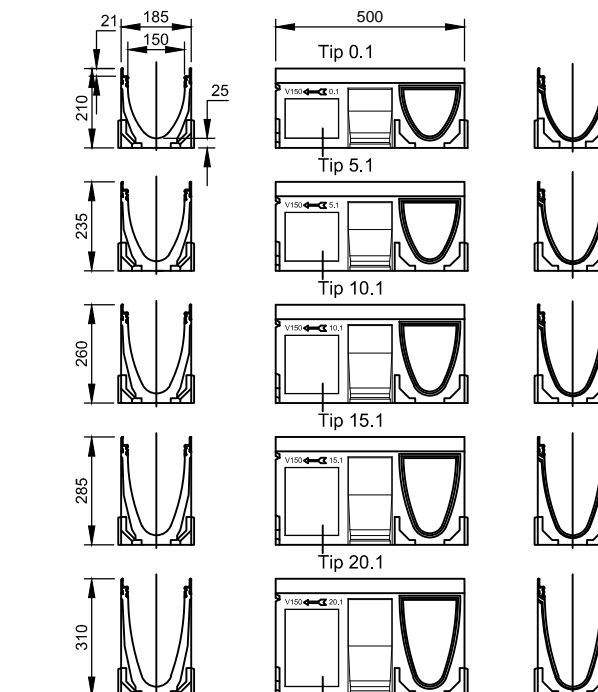
| Kanal | Gr. visina (mm) | Materijal ruba | | |
|----------|--------------------|------------------------------|--------------------------|----------------------------|
| | | pocink.čelik Broj artikla | L.gvožđe Broj artikla | nerd.čelik Broj artikla |
| tip 0.0 | 210 | 12730 | 12930 | 12830 |
| tip 5.0 | 235 | 12740 | 12940 | 12840 |
| tip 10.0 | 260 | 12750 | 12950 | 12850 |
| tip 15.0 | 285 | 12760 | 12960 | 12860 |
| tip 20.0 | 310 | 12770 | 12970 | 12870 |

Sabirno okno sa bočnim priključkom



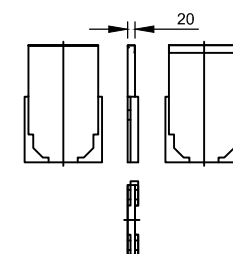
| Sabirno okno | | Materijal ruba | | |
|--------------|------|------------------------------|--------------------------|----------------------------|
| | | pocink.čelik Broj artikla | L.gvožđe Broj artikla | nerd.čelik Broj artikla |
| plitko | Ø160 | 12791 | 12991 | 12891 |
| plitko | Ø160 | 12792 | 12992 | 12892 |

ACO Multiline V150 0,5m sa mogućim spojevima kanala u obliku L ili T i predizvedenim priključkom na odvod Ø 160



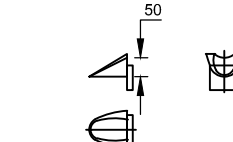
| Kanal | Gr. visina (mm) | Materijal ruba | | |
|----------|--------------------|------------------------------|--------------------------|----------------------------|
| | | pocink.čelik Broj artikla | L.gvožđe Broj artikla | nerd.čelik Broj artikla |
| tip 0.1 | 210 | 12732 | 12932 | 12832 |
| tip 5.1 | 235 | 12742 | 12942 | 12842 |
| tip 10.1 | 260 | 12752 | 12952 | 12852 |
| tip 15.1 | 285 | 12762 | 12962 | 12862 |
| tip 20.1 | 310 | 12772 | 12972 | 12872 |

Čeoni poklopac za ACO Multiline V150



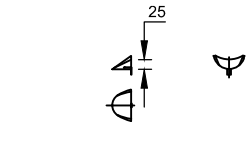
| Čeoni poklopac | Materijal ruba | | |
|----------------|------------------------------|--------------------------|----------------------------|
| | pocink.čelik Broj artikla | L.gvožđe Broj artikla | nerd.čelik Broj artikla |
| tip 0 - 20 | 12785 | 12985 | 12485 |

Prelazni element 5 cm



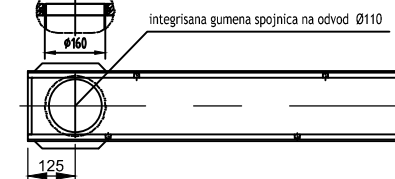
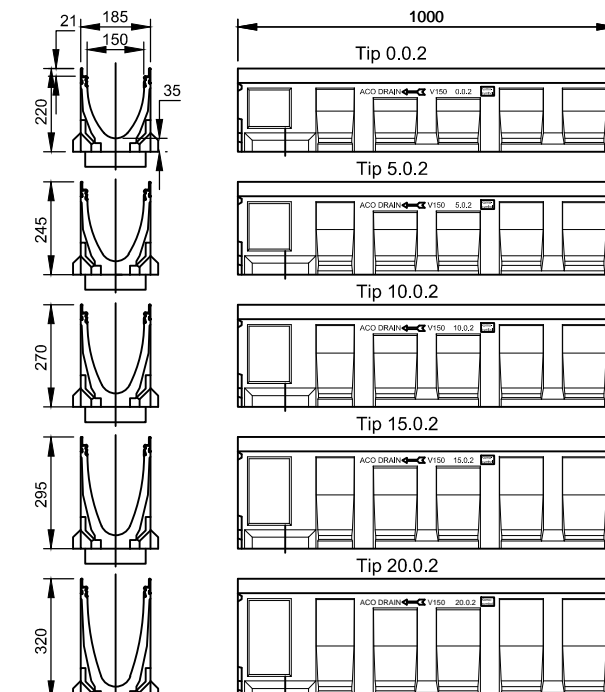
| Kaskada 5 cm | Broj artikla |
|--------------------------|--------------|
| tip 0. - 10. i 10. - 20. | 13001 |

Prelazni element 2,5 cm



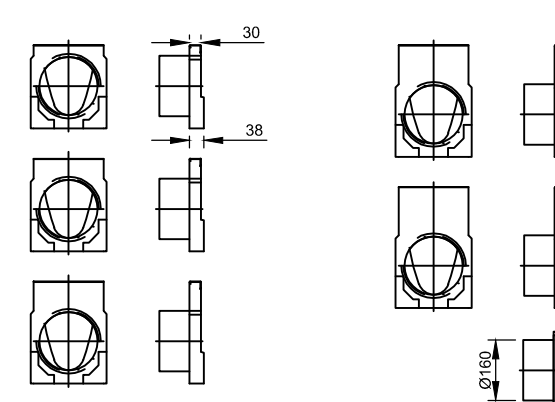
| Kaskada 2,5 cm | Broj artikla |
|--------------------------|--------------|
| tip 0. - 10. i 10. - 20. | 13000 |

ACO Multiline V150 1m sa integrisanom gumenom spojnicom na odvod Ø 160



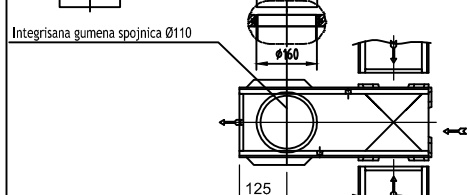
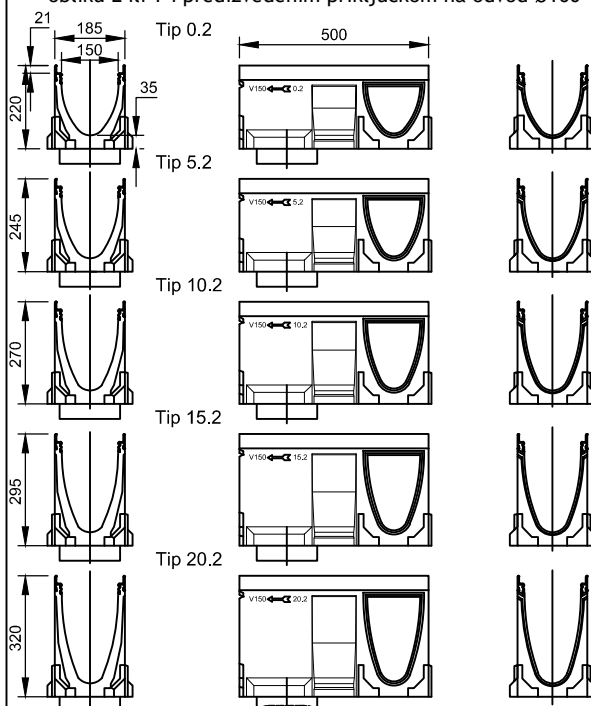
| Kanal | Gr. visina (mm) | Materijal ruba | | |
|------------|--------------------|------------------------------|--------------------------|----------------------------|
| | | pocink.čelik Broj artikla | L.gvožđe Broj artikla | nerd.čelik Broj artikla |
| tip 0.0.2 | 220 | 12731 | 12931 | 12831 |
| tip 5.0.2 | 245 | 12741 | 12941 | 12841 |
| tip 10.0.2 | 270 | 12751 | 12951 | 12851 |
| tip 15.0.2 | 295 | 12761 | 12961 | 12861 |
| tip 20.0.2 | 320 | 12771 | 12971 | 12871 |

Čeoni poklopac sa priključkom Ø 110



| Čeoni poklopac | Materijal ruba | | |
|----------------|------------------------------|--------------------------|----------------------------|
| | pocink.čelik Broj artikla | L.gvožđe Broj artikla | nerd.čelik Broj artikla |
| tip 0. | 12786 | 12986 | 12886 |
| tip 5. | 12787 | 12987 | 12887 |
| tip 10. | 12788 | 12988 | 12888 |
| tip 15. | 12789 | 12989 | 12889 |
| tip 20.2 | 12790 | 12990 | 12490 |

ACO Multiline V150 0,5m, sa mogućim spojevima kanala u obliku L ili T i predizvedenim priključkom na odvod Ø160



| Kanal | Gr. visina (mm) | Materijal ruba | | |
|----------|--------------------|------------------------------|--------------------------|----------------------------|
| | | pocink.čelik Broj artikla | L.gvožđe Broj artikla | nerd.čelik Broj artikla |
| tip 0.2 | 220 | 12733 | 12933 | 12833 |
| tip 5.2 | 245 | 12743 | 12943 | 12843 |
| tip 10.2 | 270 | 12753 | 12953 | 12853 |
| tip 15.2 | 295 | 12763 | 12963 | 12863 |
| tip 20.2 | 320 | 12773 | 12973 | 12873 |



ACO građevinski elementi d.o.o.
Mala pruga 39a
11283 Beograd
www.aco.rs

tel: +381 (0) 4141580
fax: +381 (0) 4141590
e-mail: aco@aco.rs

razmera:

R 1:20

NAZIV:
ACO Multiline V150