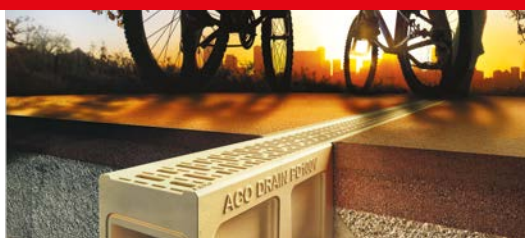


Line drainage



Monocast channels

ACO DRAIN® Monoblock PD

ACO DRAIN® Monoblock RD



Contents

| | |
|-----------------------|---|
| New color of channels | 5 |
|-----------------------|---|

ACO DRAIN® Monoblock PD

| | | | |
|--|--------------------|--------------------|----|
| System diagram | | | 6 |
| Clear width | | | 6 |
| Major components of the system | | | 6 |
| System benefits | | | 6 |
| TYPICAL APPLICATIONS | | | 7 |
| Sample installation manuals and completed projects | | | 8 |
| Technical data sheets | | | 10 |
| | Clear width | Maximum load class | |
| PD 100 V | 100 | D 400 | 10 |
| PD 150 V | <div>New</div> 150 | D 400 | 12 |
| PD 200 V | 00 | D 400 | 14 |

ACO DRAIN® Monoblock RD

| | | | |
|--|----------------|--------------------|----|
| System diagram | | | 16 |
| Clear width | | | 16 |
| Major components of the system | | | 16 |
| System benefits | | | 16 |
| TYPICAL APPLICATIONS | | | 17 |
| Sample installation manuals and completed projects | | | 18 |
| Technical data sheets | | | 20 |
| | Clear width | Maximum load class | |
| RD 100 V | 100 | F 900 | 20 |
| RD 150 V | 150 | F 900 | 22 |
| RD 200 V | 200 (new type) | F 900 | 26 |
| RD 200 V | 200 | F 900 | 28 |
| RD 300 | 300 | F 900 | 31 |
| Accessories | | | 34 |

MONOCAST CHANNELS

TECHNICAL DETAILS

www.aco.com

ACO Drain® Monoblock PD 100 V, 150 V, 200 V

ACO Drain® Monoblock RD 100 V, 150 V, 200 V, 300



Natural channels

- match the color of concrete surfaces

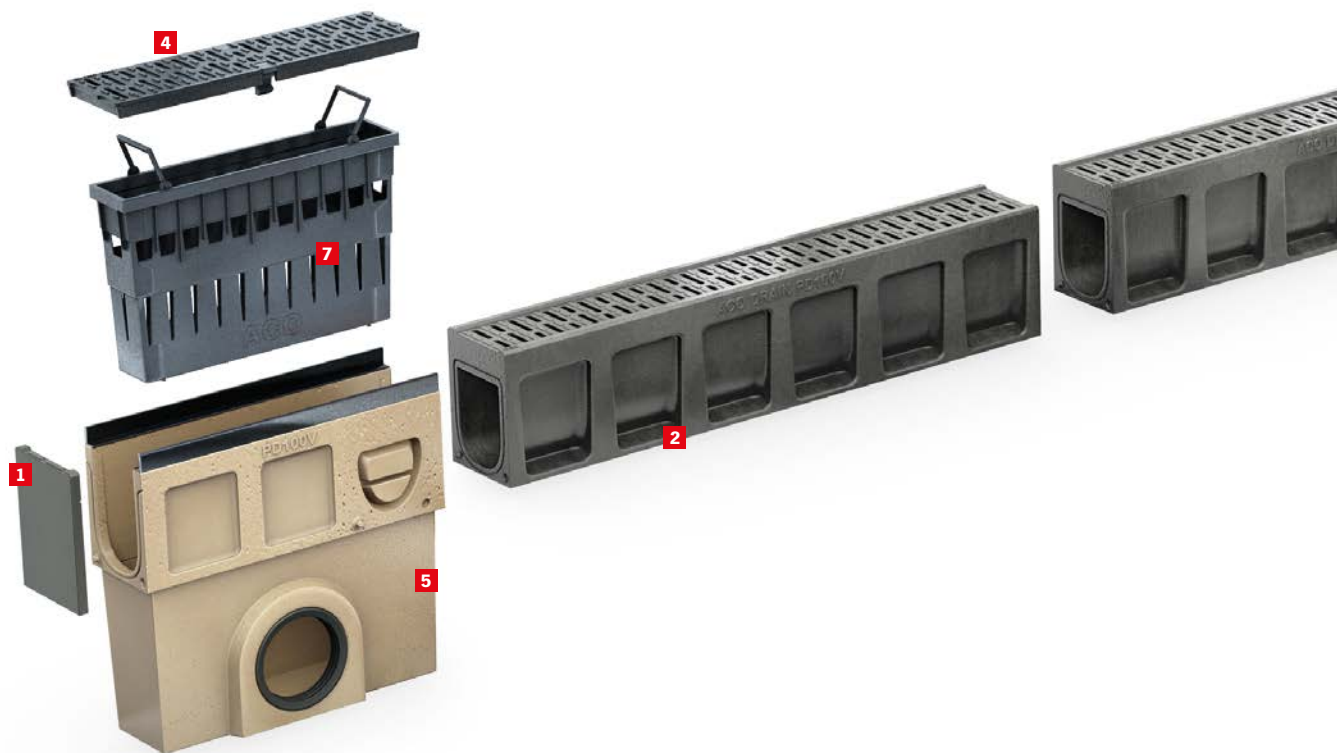
Anthracite channels

- perfectly match asphalt surfaces



ACO Drain® Monoblock PD 100V, 150V, 200V

Clear width [mm]: 100, 150, 200



Components of the system

Channels

Load class: D400

Material: natural or anthracite polymer concrete

Type of channel: without integrated gradient

Channel connection: unisex

Gratings

Material: monocast channel design (trench body + grating), Inspection elements with a grating (Drainlock® locking device)

Sump units

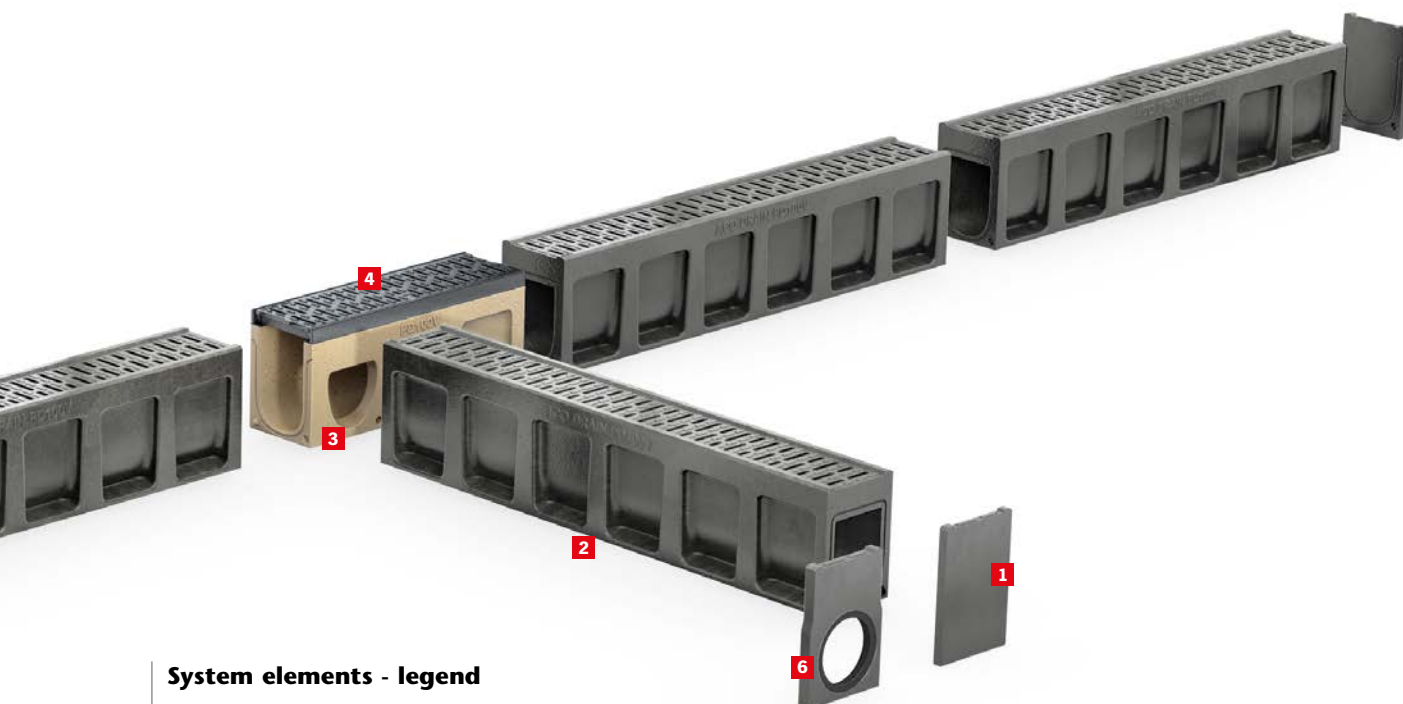
Load class: D 400

Material: Polymer concrete

Version: One-piece design made of polymer concrete with a grating (Drainlock® locking device)

System benefits

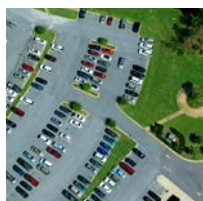
- A narrow inflow slot of the grating (8 mm for PD 100V, 12 mm for PD 150V and 15 mm for PD 200V) allows for application of this system **at intersections of footpaths with roads.**
- The monocast design **prevents faulting and theft of the grating.**
- The side structure of the trench (anchoring pockets) and a fully monolithic design allows for a **quick and easy installation.**
- Additional sealing compounds may be applied to the system to provide complete watertightness, if required.
- The V profile of the channel allows to achieve the **self-cleaning effect** even in case of small drainage areas (narrow and short sections of the line drainage system).



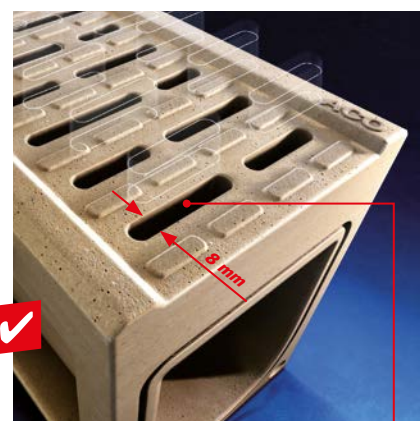
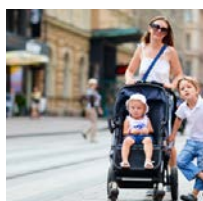
System elements - legend

- 1 End cap
- 2 Channel
- 3 Access unit
- 4 Grating
- 5 Sump unit
- 6 End cap with gasket
- 7 Silt basket

Typical applications



- outdoor car parks
- cycle tracks and sidewalks
- hotels,
- shopping malls,
- home and garden areas,
- sport facilities,
- schoolyards,
- train platforms.



A narrow inflow slot of the grating allows for application of this system **at intersections of footpaths with roads.**



New

ACO Drain® Monoblock PD 100V line drainage system

TECHNICAL DETAILS

www.aco.com

Monocast polymer concrete channel anthracite or natural

V cross-section

Clear width 10.0 cm

Maximum load class D 400, compliant with EN 1433:2005

| Type | Length | Width | Height | Inlet area | Weight | Units per pallet | Part no. | | |
|------|--------|-------|--------|--------------------|--------|------------------|----------------|------------|---------|
| | cm | cm | cm | cm ² /m | kg | | anthracite mix | anthracite | natural |

Channel

made of polymer concrete, anthracite or natural

| | | | | | | | | | |
|-----|-------|------|------|-----|------|----|--------|-------|-------|
| 0.0 | 100,0 | 15,0 | 23,0 | 202 | 32,8 | 25 | 10722M | 10722 | 10832 |
|-----|-------|------|------|-----|------|----|--------|-------|-------|

Access unit

made of polymer concrete, natural, load class D 400, with cast-iron grating and edge rails

| | | | | | | | | | |
|----------------------|------|------|------|-----|------|----|-------|--|--|
| 0.1 ^{2) 3)} | 50,0 | 15,0 | 24,0 | 371 | 14,0 | 10 | 10836 | | |
| 0.2 ^{2) 1)} | 50,0 | 15,0 | 24,0 | 371 | 14,0 | 10 | 10835 | | |

Sump unit

made of polymer concrete, elements:

cast-iron grating and edge rails, plastic silt basket

| | | | | | | | | | |
|--------------|------|------|------|-----|------|---|-------|--|--|
| Outlet Ø 110 | 50,0 | 15,0 | 50,0 | 371 | 31,3 | – | 10837 | | |
| Outlet Ø 160 | 50,0 | 15,0 | 50,0 | 371 | 31,5 | – | 10838 | | |

End cap

made of polymer concrete, anthracite or natural, for the beginning and end of the channel

| | | | | | | | | | |
|---------|-----|------|------|---|-----|----|-------|-------|--|
| End cap | 2,0 | 15,0 | 23,0 | – | 1,4 | 25 | 10723 | 10833 | |
|---------|-----|------|------|---|-----|----|-------|-------|--|

End cap with gasket

made of polymer concrete, anthracite or natural, for the end of the channel, with gasket Ø 110

| | | | | | | | | | |
|---------------------|-----|------|------|---|-----|---|-------|-------|--|
| End cap with gasket | 2,5 | 15,0 | 23,0 | – | 1,2 | 6 | 10724 | 10834 | |
|---------------------|-----|------|------|---|-----|---|-------|-------|--|

¹⁾ With an outlet Ø 110 in the bottom, with a lip labyrinth gasket for a watertight vertical connection to the sewerage.²⁾ With side furrows to make angle joints, T-joints and cross-joints.³⁾ With furrows in the bottom, to make a vertical opening for the Ø 110 outlet.

Monoblock PD 100V channel, 1.0 m anthracite slot 8 mm



Monoblock PD 100V channel, 1.0 m natural slot 8 mm



Monoblock PD 100V access unit



Monoblock PD 100V sump unit



Monoblock PD 100V end cap



Monoblock PD 100V end cap with gasket

New**ACO Drain® Monoblock PD 100V line drainage system**

TECHNICAL DETAILS

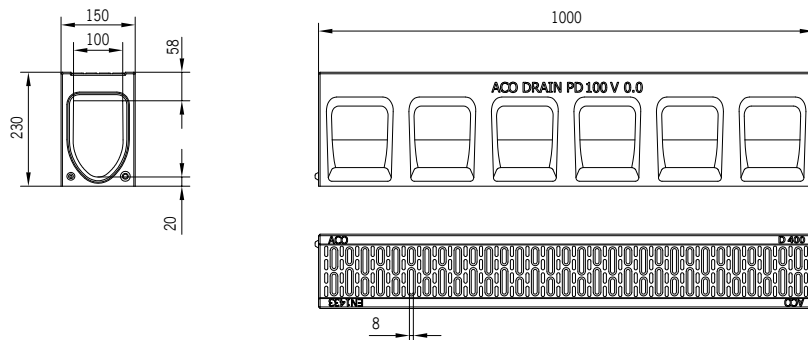
www.aco.com

Monocast polymer concrete channel anthracite or natural

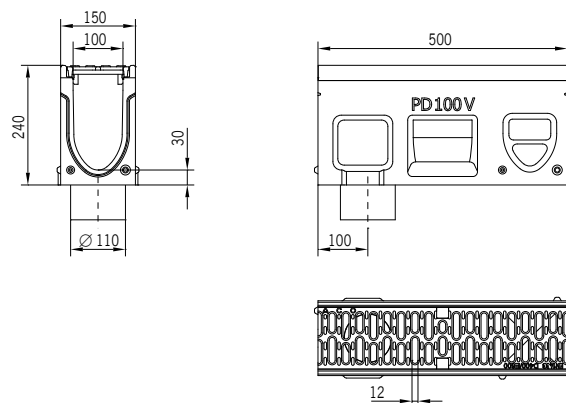
V cross-section

Clear width 10.0 cm

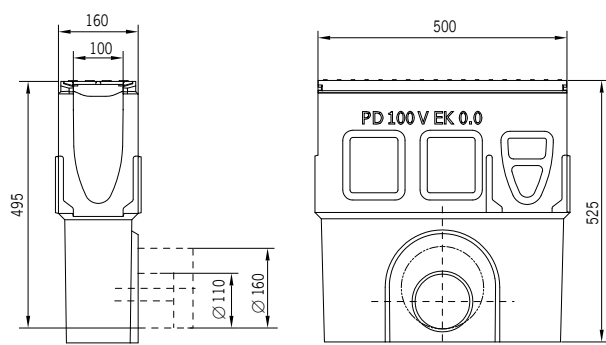
Maximum load class D 400, compliant with EN 1433:2005



Channel size
ACO Drain® Monoblock PD 100V, 1.0 m



Size of the access unit
ACO Drain® Monoblock PD 100V



Size of the sump unit
ACO Drain® Monoblock PD 100V



New

ACO Drain® Monoblock PD 150V line drainage system

TECHNICAL DETAILS

www.aco.com

Monocast polymer concrete channel anthracite or natural

V cross-section

Clear width 15.0 cm

Maximum load class D 400, compliant with EN 1433:2005

| Type | Length | Width | Height | Inlet area | Weight | Part no. | | |
|------|--------|-------|--------|--------------------|--------|----------------|------------|---------|
| | cm | cm | cm | cm ² /m | kg | anthracite mix | anthracite | natural |

Channel

made of polymer concrete, anthracite or natural

| | | | | | | | | |
|-----|-----|----|----|-----|------|---------|--------|--------|
| 0.0 | 100 | 20 | 27 | 296 | 53,8 | 413136M | 413136 | 416986 |
|-----|-----|----|----|-----|------|---------|--------|--------|

Access unit

made of polymer concrete, natural, load class D 400, with cast-iron grating and edge rails

| | | | | | | | | |
|----------------------|----|----|----|-----|------|--------|--|--|
| 0.1 ²⁾ 3) | 50 | 20 | 28 | 578 | 28,4 | 416989 | | |
| 0.2 ²⁾ 1) | 50 | 20 | 28 | 578 | 29,1 | 416985 | | |

Sump unit

made of polymer concrete, elements:

cast-iron grating and edge rails, plastic silt basket

| | | | | | | | | |
|--------------|----|----|------|-----|------|--------|--|--|
| Outlet Ø 160 | 50 | 20 | 59,5 | 578 | 45,0 | 416990 | | |
|--------------|----|----|------|-----|------|--------|--|--|

End cap

made of polymer concrete, anthracite or natural, for the beginning and end of the channel

| | | | | | | | | |
|---------|-----|----|----|---|-----|--------|--------|--|
| End cap | 3,5 | 20 | 27 | - | 4,1 | 413137 | 416987 | |
|---------|-----|----|----|---|-----|--------|--------|--|

End cap with gasket

made of polymer concrete, anthracite or natural, for the end of the channel, with gasket Ø 160

| | | | | | | | | |
|---------------------|---|----|----|---|-----|--------|--------|--|
| End cap with gasket | 4 | 20 | 27 | - | 2,9 | 413138 | 416988 | |
|---------------------|---|----|----|---|-----|--------|--------|--|

¹⁾ With an outlet Ø 110 in the bottom, with a lip labyrinth gasket for a watertight vertical connection to the sewerage.²⁾ With side furrows to make angle joints, T-joints and cross-joints.³⁾ With furrows in the bottom, to make a vertical opening for the Ø 160 outlet.

Monoblock PD 150V channel, 1.0 m anthracite, slot 12 mm



Monoblock PD 150V channel, 1.0 m natural, slot 12 mm



Monoblock PD 150V access unit



Monoblock PD 150V sump unit



Monoblock PD 150V end cap



Monoblock PD 150V end cap with gasket

New

ACO Drain® Monoblock PD 150V line drainage system

TECHNICAL DETAILS

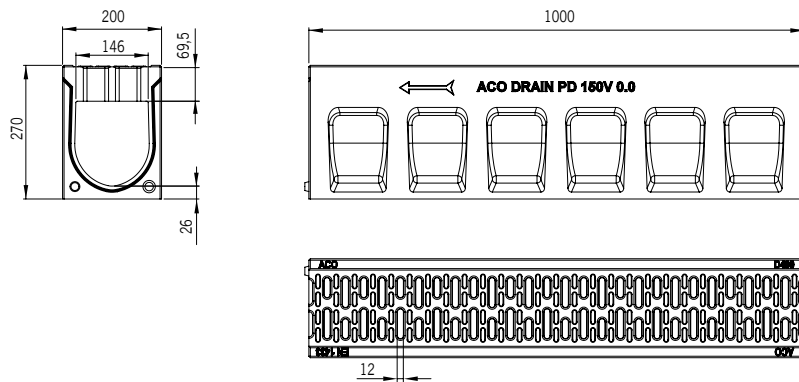
www.aco.com

Monocast polymer concrete channel anthracite or natural

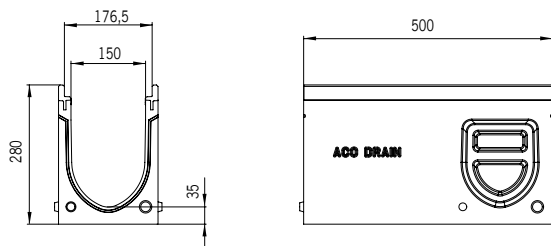
V cross-section

Clear width 15.0 cm

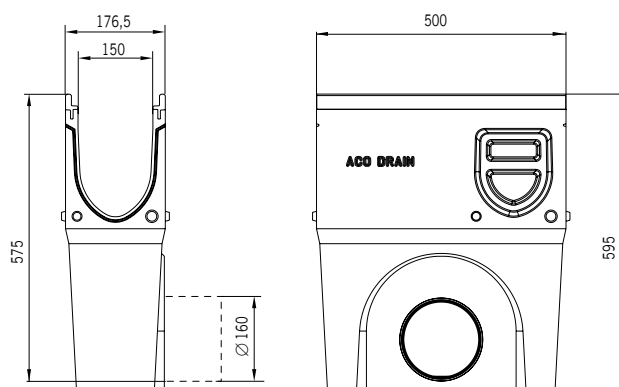
Maximum load class D 400, compliant with EN 1433:2005



Channel size
ACO Drain® Monoblock PD 150V, 1.0m



Size of the access unit
ACO Drain® Monoblock PD 150V



Size of the sump unit
ACO Drain® Monoblock PD 150V



New

ACO Drain® Monoblock PD 200V line drainage system

TECHNICAL DETAILS

www.aco.com

Monocast polymer concrete channel anthracite or natural

V cross-section

Clear width 20.0 cm

Maximum load class D 400, compliant with EN 1433:2005

| Type | Length | Width | Height | Inlet area | Weight | Part no. | | |
|------|--------|-------|--------|--------------------|--------|----------------|------------|---------|
| | cm | cm | cm | cm ² /m | kg | anthracite mix | anthracite | natural |

Channel

made of polymer concrete, anthracite or natural

| | | | | | | | | |
|-----|-------|------|------|-----|------|--------|-------|-------|
| 0.0 | 100,0 | 25,0 | 32,0 | 440 | 72,0 | 11041M | 11041 | 10982 |
|-----|-------|------|------|-----|------|--------|-------|-------|

Access unit

made of polymer concrete, natural, load class D 400, with cast-iron grating and edge rails

| | | | | | | | | |
|---------------------|------|------|------|-----|------|--|-------|--|
| 0.1 ¹⁾²⁾ | 50,0 | 25,0 | 33,0 | 740 | 38,5 | | 10985 | |
|---------------------|------|------|------|-----|------|--|-------|--|

Sump unit

made of polymer concrete¹⁾²⁾, elements:

cast-iron grating and edge rails, plastic silt basket

| | | | | | | | | |
|--------------|------|------|------|-----|------|--|--------|--|
| Outlet Ø 160 | 50,0 | 25,0 | 64,5 | 740 | 60,0 | | 10987 | |
| Outlet Ø 200 | 50,0 | 25,0 | 64,5 | 740 | 60,0 | | 303325 | |

End cap

made of polymer concrete, anthracite or natural, for the beginning and end of the channel

| | | | | | | | | |
|---------|---|------|------|---|-----|-------|-------|--|
| End cap | 4 | 25,0 | 32,0 | - | 6,2 | 11042 | 10983 | |
|---------|---|------|------|---|-----|-------|-------|--|

End cap with gasket

made of polymer concrete, anthracite or natural, for the end of the channel,

with gasket Ø 160

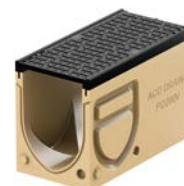
| | | | | | | | | |
|---------------------|---|------|------|---|-----|-------|-------|--|
| End cap with gasket | 4 | 25,0 | 32,0 | - | 5,0 | 11043 | 10984 | |
|---------------------|---|------|------|---|-----|-------|-------|--|

¹⁾ With side furrows to make angle joints, T-joints and cross-joints.²⁾ With furrows in the bottom, to make a vertical opening for the Ø 110 outlet.

Monoblock PD 200V channel, 1.0 m anthracite



Monoblock PD 200V channel, 1.0 m natural



Monoblock PD 200V access unit, natural



Monoblock PD 200V sump unit, natural



Monoblock PD 200V end cap



Monoblock PD 200V end cap with gasket

New**ACO Drain® Monoblock PD 200V line drainage system**

TECHNICAL DETAILS

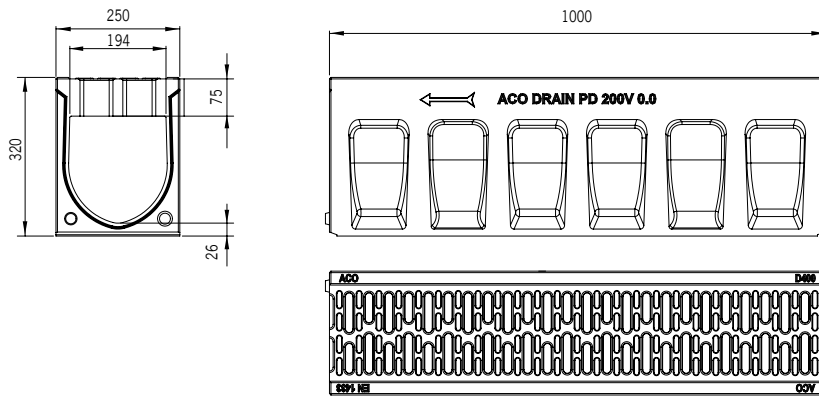
www.aco.com

Monocast polymer concrete channel anthracite or natural

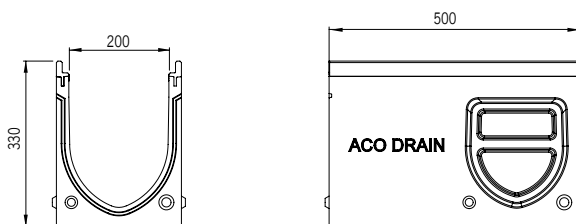
V cross-section

Clear width 20.0 cm

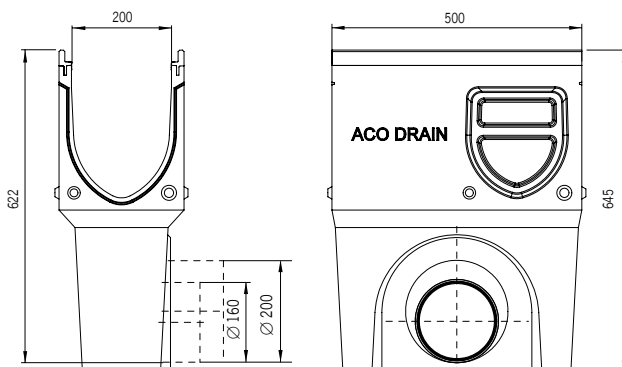
Maximum load class D 400, compliant with EN 1433:2005



Channel size
ACO Drain® Monoblock PD 200V, 1.0 m



Size of the access unit
ACO Drain® Monoblock PD 200V



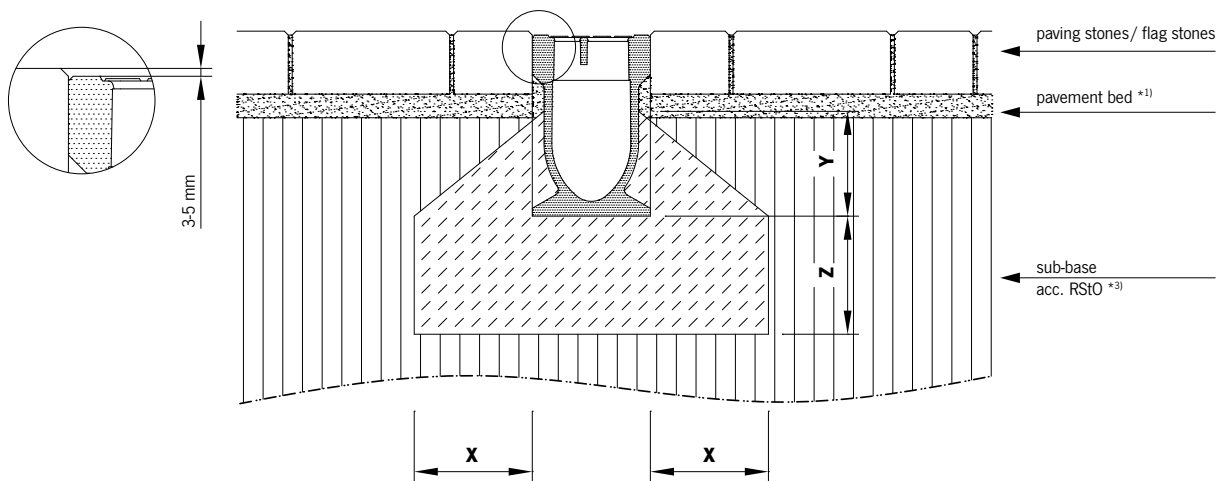
Size of the sump unit
ACO Drain® Monoblock PD 200V



ACO Drain® Monoblock PD 100V / PD 150V / PD 200V

TECHNICAL DETAILS
www.aco.com

Installation in concrete pavement, class – A 15 through D 400



*) see the list of subscripts in preliminary notes to our installation manual

| | | | | | | | |
|--|---------------------|-----------|-----------|-----------|------------------------------|--|--|
| Load class | (acc. DIN EN 1433) | A 15 | B 125 | C 250 | D 400 | | |
| Compressive strength class - foundation concrete | (acc. DIN EN 206-1) | ≥ C 12/15 | ≥ C 12/15 | ≥ C 20/25 | object-specific | | |
| Exposure class - foundation concrete *16) | | (X0) | (X0) | (X0) | will be advised upon request | | |
| Foundation dimensions - Type: M (acc. DIN EN 1433) | X [cm] | ≥ 10 | ≥ 10 | ≥ 15 | | | |
| | Y [cm] | ≥ 10 | ≥ 10 | ≥ 10 | | | |
| | Y [cm] | ≥ 10 | ≥ 10 | ≥ 15 | | | |

Valid only in connection with general notes to our installation manual! Download from www.aco-tiefbau.de

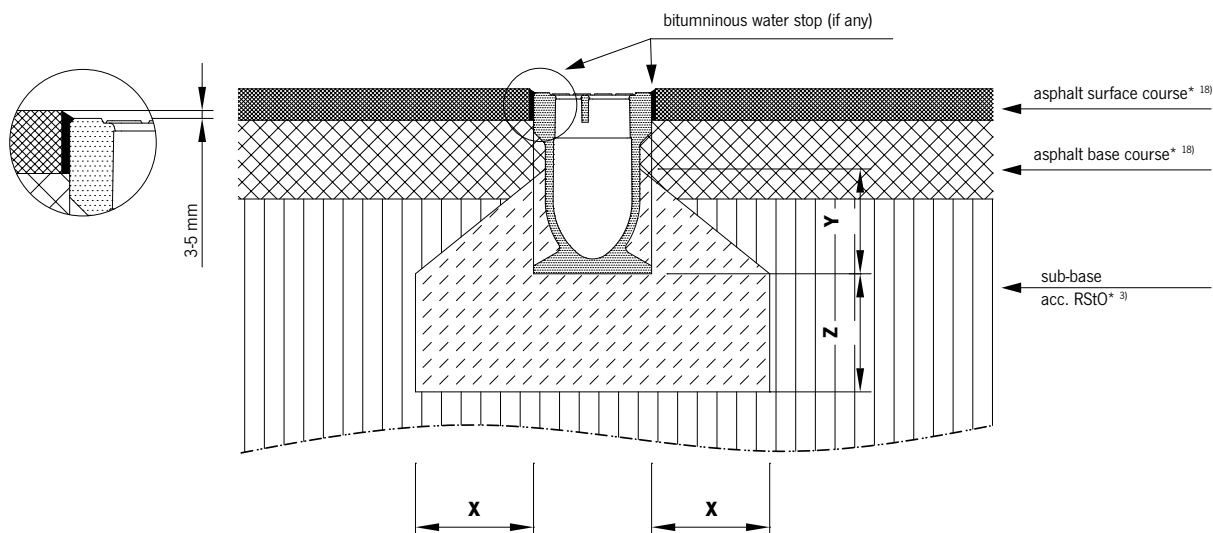
Drawing G1-E01-920-3, Version 12.09

ACO Drain® Monoblock PD 100V / PD 150V / PD 200V

TECHNICAL DETAILS

www.aco.com

Installation in asphalt, class – A 15 through D 400



*(.) see the list of subscripts in preliminary notes to our installation manual

| Load class | (acc. DIN EN 1433) | A 15 | B 125 | C 250 | D 400 | | |
|--|---------------------|-----------|-----------|-----------|------------------------------|--|--|
| Compressive strength class - foundation concrete | (acc. DIN EN 206-1) | ≥ C 12/15 | ≥ C 12/15 | ≥ C 20/25 | object-specific | | |
| Exposure class - foundation concrete *16) | | (X0) | (X0) | (X0) | will be advised upon request | | |
| Foundation dimensions - Type: M (acc. DIN EN 1433) | X [cm] | ≥ 10 | ≥ 10 | ≥ 15 | | | |
| | Y [cm] | ≥ 10 | ≥ 10 | ≥ 10 | | | |
| | Y [cm] | ≥ 10 | ≥ 10 | ≥ 15 | | | |

Valid only in connection with general notes to our installation manual! Download from www.aco-tiefbau.de

Drawing G1-E01-921-3, Version 12.09

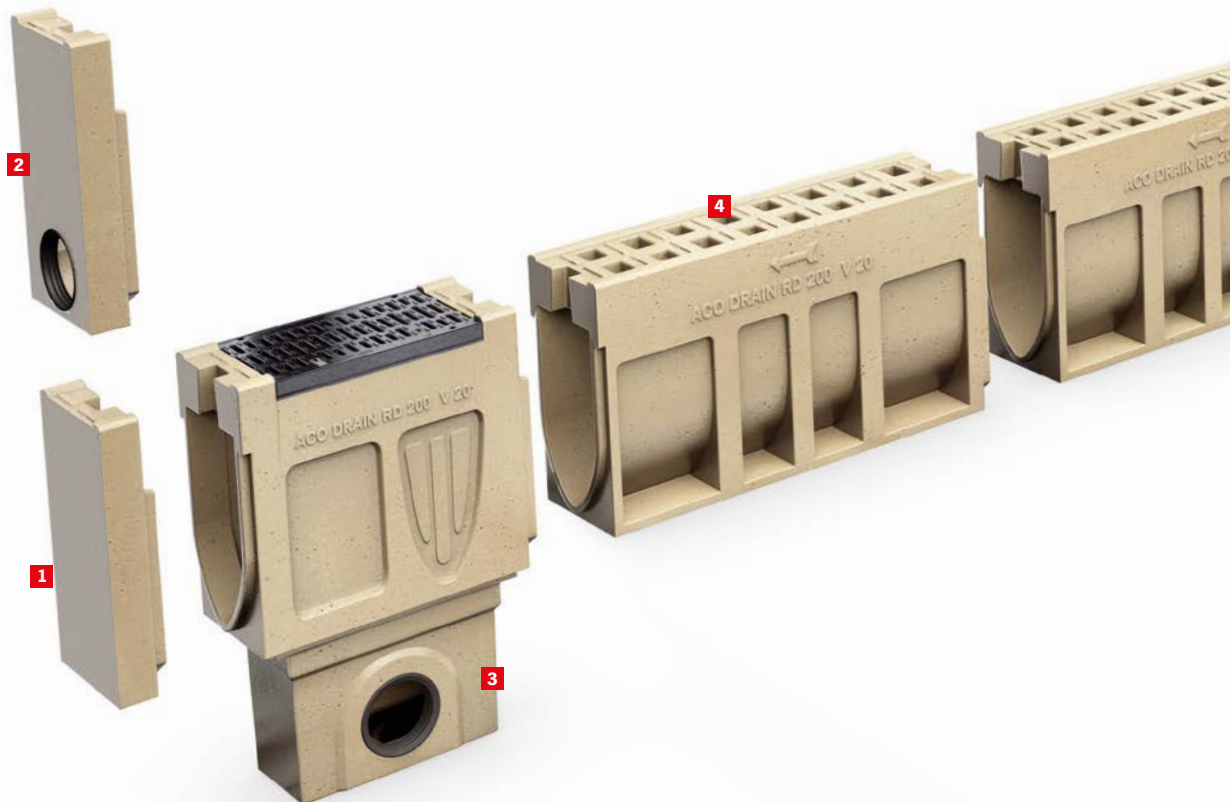


ACO Drain® Monoblock RD 100V / 150V / 200V / 300

TECHNICAL DETAILS

www.aco.com

Clear width [mm]: 100, 150, 200, 300



Components of the system

Channels

Load class: D 400 or F 900

Material: natural or anthracite polymer concrete (mass-colored)

Type of channel: without integrated slope;

3 height options - RD 150V

2 height options - RD 200V

1 height option - RD 100V and RD 300

Joining of channels

Tongue and groove (RD 100V, RD 200V)

Unisex (**RD 150V**)

Gratings

Material: Polymer concrete - monocast channel design (trench body + grating); inspection elements with KTL-coated ductile iron (GGG) grating and edge rail

Sump units

Load class: F 900

Material: Polymer concrete

Version:

1. one-piece design made of polymer concrete (RD 100V) with a KTL-coated ductile iron (GGG) grating and edge rail, with silt basket
2. two-piece design RD 300 made of polymer concrete (RD 150V, RD 200V) with a KTL-coated ductile iron (GGG) grating (with Powerlock® boltless locking system) and edge rail, with silt basket
3. two- or three-piece design RD 300

System benefits

- The monocast design **prevents faulting and theft of the grating.**
- The side structure of the channel (anchoring pockets) and a fully monolithic design allows for **a quick and easy installation.**
- Thanks to the monolithic design, the system is recommended for installation in heavy duty conditions - **across traffic routes**, e.g. before railway crossings or road intersections
- Additional gasketing compounds may be applied to the system to provide **complete watertightness**, if required.
- The V profile of the channel allows to achieve the self-cleaning effect even in case of small drainage areas (narrow and short sections of the line drainage system)
- Fixing using the Powerlock® **locking springs** - a boltless grating fixing system, which allows to open the system for inspection and cleaning at any time following installation.



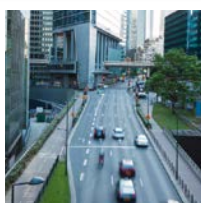
System elements – legend

- 1 End cap
- 2 End cap with gasket
- 3 Sump unit, top section with KTL coated cast iron edge rail and grating
- 4 Monolithic channel
- 5 Channel (access unit) with a KTL coated cast iron grating, with side furrows for cross joints.
- 6 Side connection adapter
- 7 Reverse flow adapter

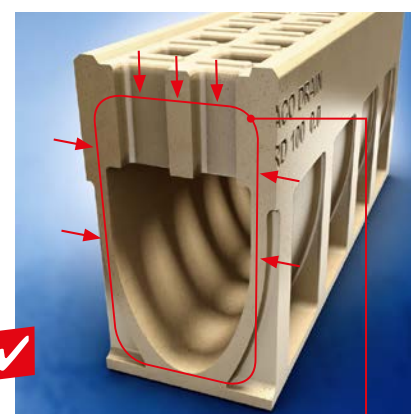


ACO Drain® Monoblock RD 150V monocast channel natural or anthracite, **in three heights.**

Typical applications



- **droads - highways, motorways and local roads (drainage across and along the roadway),**
- **logistics centers and industrial areas - outdoor applications,**
- **airports,**
- **ports and container transshipment areas,**
- outdoor car parks,
- gas stations and fuel terminals,
- train platforms,
- warehouses,
- packing facilities,
- car washes.



Thanks to the **monolithic design**, the system is recommended for installation in heavy duty conditions.



ACO Drain® Monoblock RD 100V line drainage system

TECHNICAL DETAILS

www.aco.com

Monocast polymer concrete channel anthracite or natural

V cross-section

Clear width 10.0 cm

Maximum load class D 400 - F 900, compliant with EN 1433:2005

| Type | Length | Width | Height | Inlet area | Weight | Part no. | | |
|------|--------|-------|--------|--------------------|--------|----------------|------------|---------|
| | cm | cm | cm | cm ² /m | kg | anthracite mix | anthracite | natural |

Monolithic channel

made of polymer concrete, anthracite or natural, with additional sealing with a sealant (SF) possible

| | | | | | | | | |
|-----------------|-------|------|------|-----|------|--------|-------|-------|
| 0.0 (D400-F900) | 100,0 | 16,0 | 26,5 | 308 | 50,0 | 10764M | 10764 | 10763 |
|-----------------|-------|------|------|-----|------|--------|-------|-------|

Access unit with Ø 110 gasket

made of polymer concrete, natural, load class F 900, with the Powerlock® locking spring, possibility of additional sealing with a sealant (SF), with a Ø 110 lip labyrinth gasket

| | | | | | | | | |
|---------------------------------|------|------|------|-----|------|-------|--|--|
| 0.1 ²⁾³⁾ (D400-F900) | 50,0 | 16,0 | 27,5 | 380 | 21,0 | 10775 | | |
|---------------------------------|------|------|------|-----|------|-------|--|--|

¹⁾ Trench with an outlet Ø 110 in the bottom, with a lip labyrinth gasket for a watertight vertical connection to the sewerage.

²⁾ Trench with side furrows to make angle joints, T-joints and cross-joints.

³⁾ Trench with furrows in the bottom, to make a vertical opening for the Ø 110 outlet.

Sump unit

one-piece unit made of polymer concrete, with edge rail, silt basket, with a Ø 110 or Ø 160 lip labyrinth gasket

| | | | | | | | | |
|-------|------|------|------|-----|------|-------|--|--|
| Ø 110 | 50,0 | 16,0 | 52,5 | 380 | 31,0 | 10769 | | |
| Ø 160 | 50,0 | 16,0 | 52,5 | 380 | 31,0 | 10772 | | |

End cap

made of polymer concrete, natural

| | | | | | | | | |
|---------------------------------------|-----|------|------|--|-----|-------|-------|--|
| To close the beginning of the channel | 3,0 | 16,0 | 26,5 | | 1,9 | 10782 | 10781 | |
| To close the end of the channel | 4,0 | 16,0 | 26,5 | | 3,2 | 10785 | 10784 | |

Back end cap

made of polymer concrete, natural, with a Ø 110 lip labyrinth gasket

| | | | | | | | | |
|--------------------------|-----|------|------|--|-----|-------|-------|--|
| Back end cap with gasket | 4,0 | 16,0 | 27,5 | | 2,6 | 10788 | 10787 | |
|--------------------------|-----|------|------|--|-----|-------|-------|--|

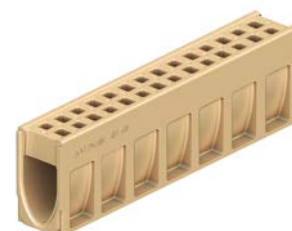
Adapter

to reverse the flow, made of polymer concrete, natural

| | | | | | | | | |
|---------|-----|------|------|--|-----|-------|-------|--|
| Adapter | 6,0 | 16,0 | 26,5 | | 3,0 | 10791 | 10790 | |
|---------|-----|------|------|--|-----|-------|-------|--|



Monolithic channel ACO Drain® Monoblock RD 100V, 1.0 m, F 900, anthracite



Monolithic channel ACO Drain® Monoblock RD 100V, 1.0 m, F 900, natural



Access unit ACO Drain® Monoblock RD 100V, natural



Sump unit ACO Drain® Monoblock RD 100V, natural



End cap to close the beginning of the channel

End cap to close the end of the channel



Back end cap with gasket



Adapter

ACO Drain® Monoblock RD 100V line drainage system

TECHNICAL DETAILS

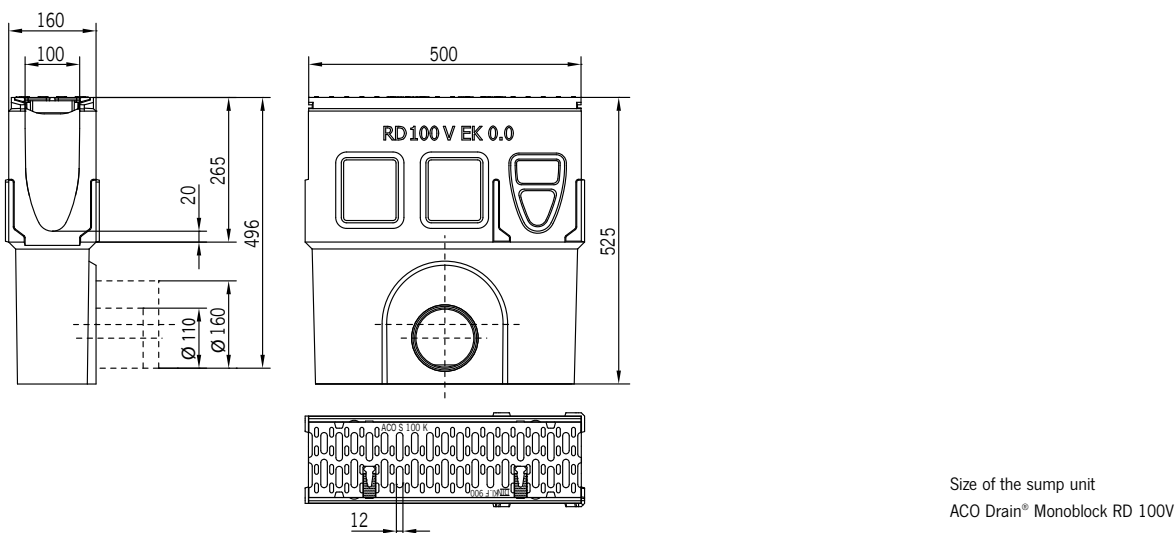
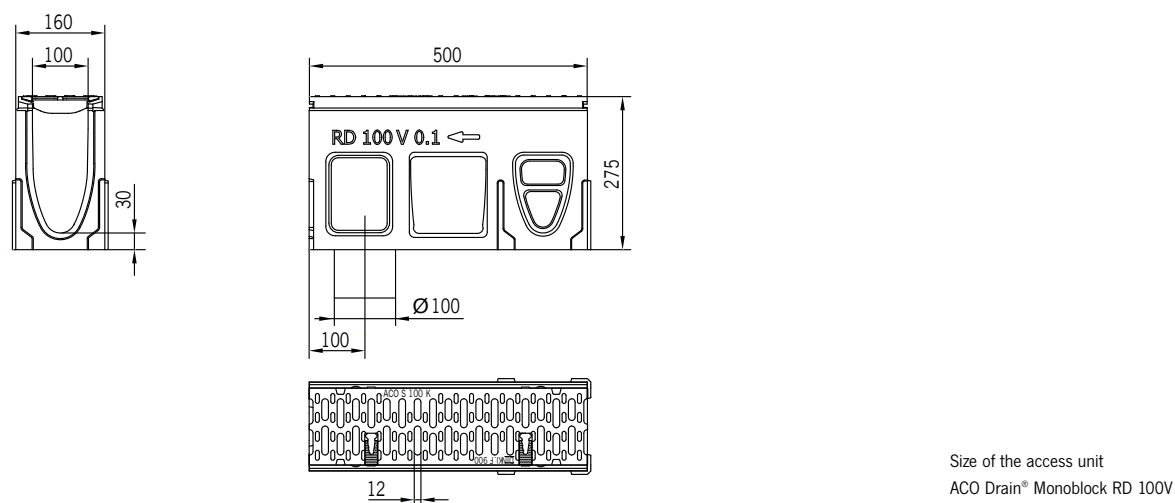
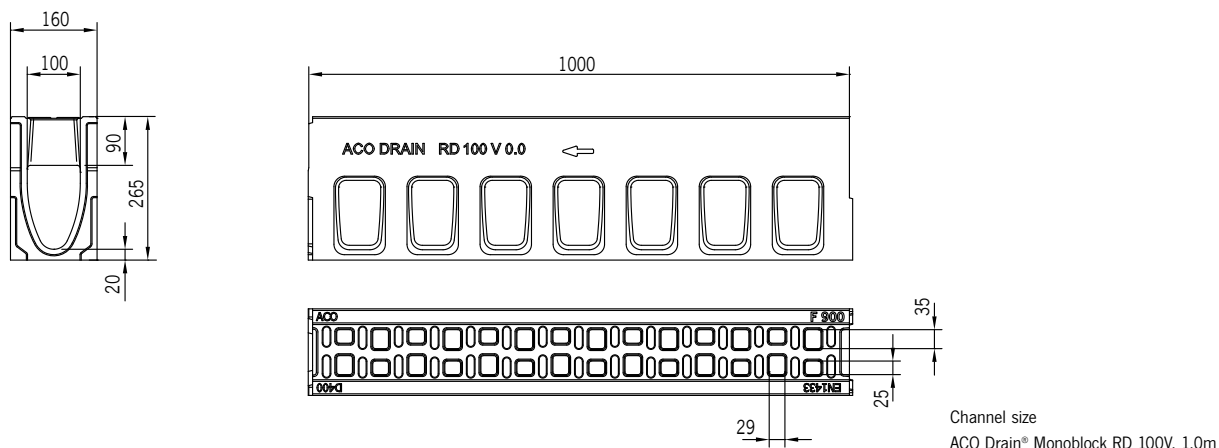
www.aco.com

Monocast polymer concrete channel anthracite or natural

V cross-section

Clear width 10.0 cm

Maximum load class D 400 - F 900, compliant with EN 1433:2005



Line drainage



New

ACO Drain® Monoblock RD 150V line drainage system

TECHNICAL DETAILS

www.aco.com

Monocast polymer concrete channel anthracite or natural

V cross-section

Clear width 15.0 cm

Maximum load class D 400 - F 900, compliant with EN 1433:2005

| Type | Length | Width | Height | Inlet area | Weight | Part no. | | |
|------|--------|-------|--------|------------|--------|----------------|------------|---------|
| | cm | cm | cm | cm²/m | kg | anthracite mix | anthracite | natural |

Monolithic channel

made of polymer concrete, natural, with additional sealing with a sealant (SF) possible

| D 400 - F 900 | | | | | | | | |
|---------------|-------|------|------|-----|------|---------|--------|--------|
| 0.0 | 100,0 | 21,0 | 28,0 | 363 | 66,3 | 130123M | 130123 | 130073 |
| 10.0 | 100,0 | 21,0 | 38,0 | 363 | 74,9 | 130124M | 130124 | 130074 |
| 20.0 | 100,0 | 21,0 | 48,0 | 363 | 83,6 | 130125M | 130125 | 130075 |

End cap

made of polymer concrete, natural, to close the beginning/end of the channel

| | | | |
|------|-----|--------|--------|
| 0.0 | 5,2 | 130135 | 130085 |
| 10.0 | 6,9 | 130136 | 130086 |
| 20.0 | 8,5 | 130137 | 130087 |

End cap with gasket

made of polymer concrete, natural, with a Ø160 lip labyrinth gasket

| | | | |
|------|-----|--------|--------|
| 0.0 | 3,8 | 130138 | 130088 |
| 10.0 | 5,4 | 130139 | 130089 |
| 20.0 | 7,9 | 130140 | 130090 |



Monolithic channel Monoblock RD 150V, 1.0 m, anthracite



Monolithic channel Monoblock RD 150V, 1.0 m, natural



End cap Monoblock RD 150V



End cap with gasket Monoblock RD 150V

New**ACO Drain® Monoblock RD 150V line drainage system**

TECHNICAL DETAILS

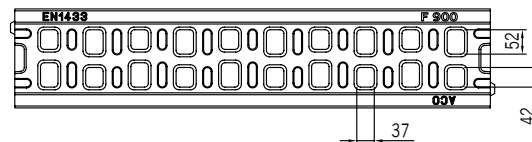
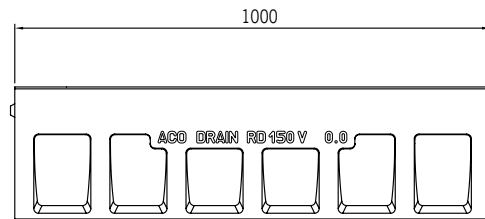
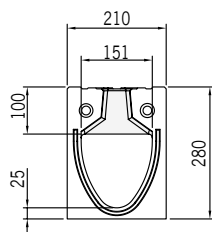
www.aco.com

Monocast polymer concrete channel anthracite or natural

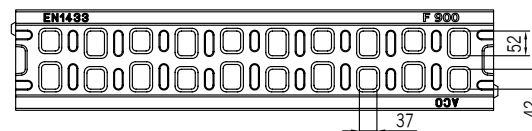
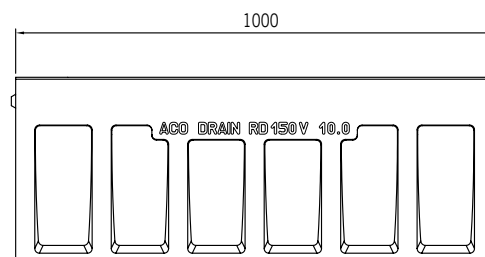
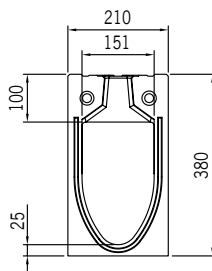
V cross-section

Clear width 15.0 cm

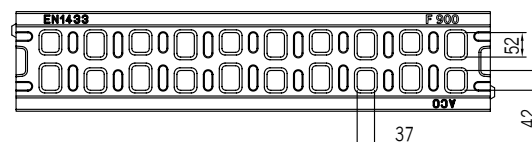
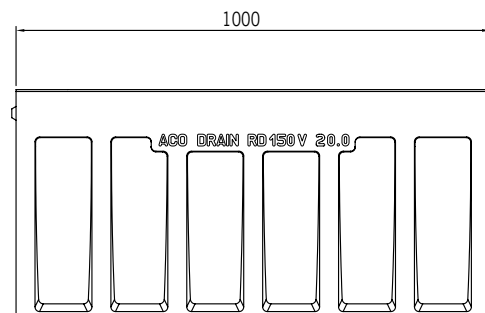
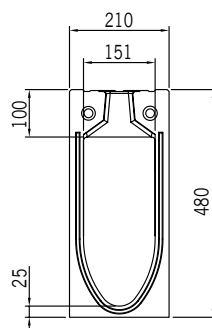
Maximum load class D 400 - F 900, compliant with EN 1433:2005



Channel size
ACO Drain® Monoblock RD 150V, type 0.0



Channel size
ACO Drain® Monoblock RD 150V, type 10.0



Channel size
ACO Drain® Monoblock RD 150V, type 20.0



New

ACO Drain® Monoblock RD 150V line drainage system

TECHNICAL DETAILS

www.aco.com

Monocast polymer concrete channel anthracite or natural

V cross-section

Clear width 15.0 cm

Maximum load class D 400 - F 900, compliant with EN 1433:2005

| Type | Length | Width | Height | Inlet area | Weight | Part no. | | |
|------|--------|-------|--------|--------------------|--------|----------------|------------|---------|
| | cm | cm | cm | cm ² /m | kg | anthracite mix | anthracite | natural |

Access unit

made of polymer concrete, anthracite or natural, with a KTL-coated ductile iron (GGG) grating, load class F 900, with the Powerlock® locking spring, possibility of additional sealing with a sealant (SF)

| | | | | | | | |
|-----------------------|------|------|------|-----|------|--------|--------|
| 0.0 ^{1) 2)} | 66,0 | 21,0 | 28,0 | 680 | 44,3 | 130126 | 130076 |
| 10.0 ^{1) 2)} | 66,0 | 21,0 | 38,0 | 680 | 51,7 | 130127 | 130077 |
| 20.0 ^{1) 2)} | 66,0 | 21,0 | 48,0 | 680 | 59,1 | 130128 | 130078 |

Access unit with Ø 110 gasket

made of polymer concrete, naturaanthracite or natural, with a KTL-coated ductile iron (GGG) grating, load class F 900, with the Powerlock® locking spring, possibility of additional sealing with a sealant (SF), with a Ø 110 lip labyrinth gasket, for a vertical connection to the sewerage

| | | | | | | | |
|--------------------|------|------|------|-----|------|--------|--------|
| 0.0 ¹⁾ | 66,0 | 21,0 | 28,0 | 680 | 43,8 | 130129 | 130079 |
| 10.0 ¹⁾ | 66,0 | 21,0 | 38,0 | 680 | 51,1 | 130130 | 130080 |
| 20.0 ¹⁾ | 66,0 | 21,0 | 48,0 | 680 | 58,3 | 130131 | 130081 |

Sump unit

made of polymer concrete, anthracite or natural, as an access unit made of ductile iron (GGG) grating, load class F 900, with a boltless grating locking system, with the safe ACO Drain® (SF) joint, to make watertight gutter lines

| | | | | | | | |
|----------------------|------|------|------|-----|------|--------|--------|
| Top section 0.0 | 66,0 | 21,0 | 33,0 | 935 | 48,0 | 130132 | 130082 |
| Top section 10.0 | 66,0 | 21,0 | 43,0 | 935 | 53,0 | 130133 | 130083 |
| Top section 20.0 | 66,0 | 21,0 | 53,0 | 935 | 65,0 | 130134 | 130084 |
| Bottom section Ø 160 | 50,0 | 23,0 | 36,6 | — | 26,5 | 10935 | |
| Bottom section Ø 200 | 50,0 | 23,0 | 36,5 | — | 26,5 | 10936 | |
| Silt basket | | | | | | 13999 | |

¹⁾ With side furrows to make angle joints, T-joints and cross-joints.

²⁾ With furrows in the bottom, to make a vertical opening for the Ø 110 outlet



Monoblock RD 150V access unit, anthracite



Monoblock RD 150V access unit, natural



Monoblock RD 150V sump unit, anthracite



Monoblock RD 150V sump unit, natural

New**ACO Drain® Monoblock RD 150V line drainage system**

TECHNICAL DETAILS

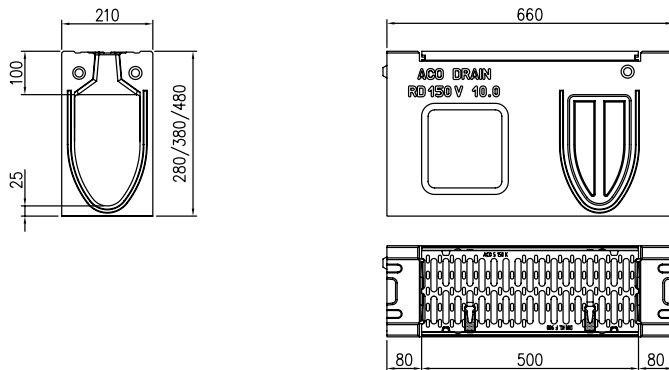
www.aco.com

Monocast polymer concrete channel anthracite or natural

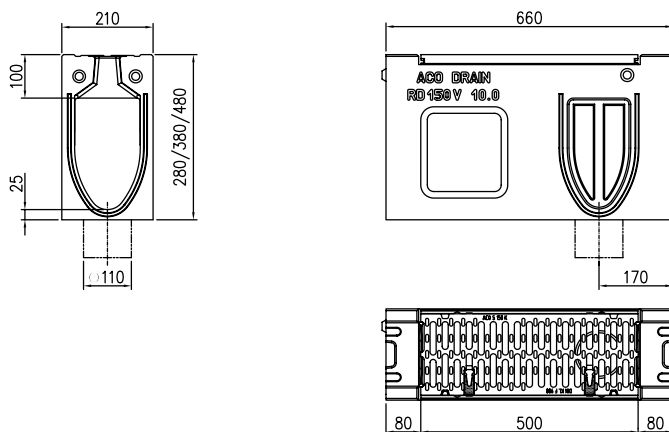
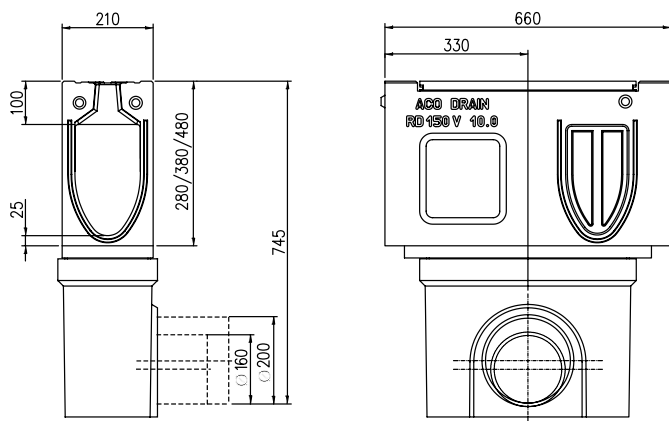
V cross-section

Clear width 15.0 cm

Maximum load class D 400 - F 900, compliant with EN 1433:2005



Size of the RD 150V access unit

Size of the RD 150V access unit
with a bottom gasket for vertical discharge

Size of the RD 150V sump unit, type 10.0

Line drainage



New

ACO Drain® Monoblock RD 200V line drainage system

TECHNICAL DETAILS

www.aco.com

Monocast polymer concrete channel anthracite or natural

V cross-section

Clear width 20.0 cm

Maximum load class D 400 - F 900, compliant with EN 1433:2005

| Type | Length | Width | Height | Inlet area | Weight | Part no. | | |
|------|--------|-------|--------|--------------------|--------|----------------|------------|---------|
| | cm | cm | cm | cm ² /m | kg | anthracite mix | anthracite | natural |

Monolithic channel

made of polymer concrete, anthracite or natural,
with additional sealing with a sealant (SF) possible

D 400 - F 900

| | | | | | | | | |
|------|-------|------|------|-----|-------|---------|--------|--------|
| 0.0 | 100,0 | 26,0 | 33,0 | 583 | 90,0 | 130040M | 130040 | 130004 |
| 20.0 | 100,0 | 26,0 | 53,0 | 583 | 111,0 | 130042M | 130042 | 130006 |

Access unit

made of polymer concrete, anthracite or natural, with ductile iron (GGG) grating,
load class F 900, with the Powerlock® locking spring,
possibility of additional sealing with a sealant (SF),
with a Ø 160 lip labyrinth gasket

| | | | | | | | |
|-----------------------|------|------|------|-----|------|--------|--------|
| 0.1 ^{2) 3)} | 66,0 | 26,0 | 33,0 | 935 | 51,6 | 130052 | 130016 |
| 20.1 ^{2) 3)} | 66,0 | 26,0 | 53,0 | 935 | 67,6 | 130053 | 130017 |
| 0.2 ^{1) 2)} | 66,0 | 26,0 | 33,0 | 935 | 51,0 | 130054 | 130018 |
| 20.2 ^{1) 2)} | 66,0 | 26,0 | 53,0 | 935 | 67,0 | 130055 | 130019 |

¹⁾ Trench with an outlet Ø 160 in the bottom, with a lip labyrinth gasket for a watertight vertical connection to the sewerage.

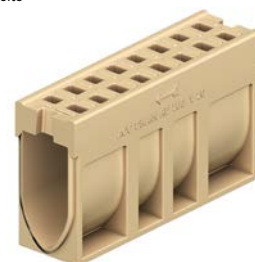
²⁾ Trench with side furrows to make angle joints, T-joints and cross-joints.

³⁾ Trench with furrows in the bottom, to make a vertical opening for the Ø 160 outlet.

Smaller inflow slot at channel joint



Monoblock RD 200V monocast channel, 1 m, anthracite



Monoblock RD 200V monocast channel, 1 m, natural



Monoblock RD 200V access unit, anthracite



Monoblock RD 200V access unit, natural

New

ACO Drain® Monoblock RD 200V line drainage system

TECHNICAL DETAILS

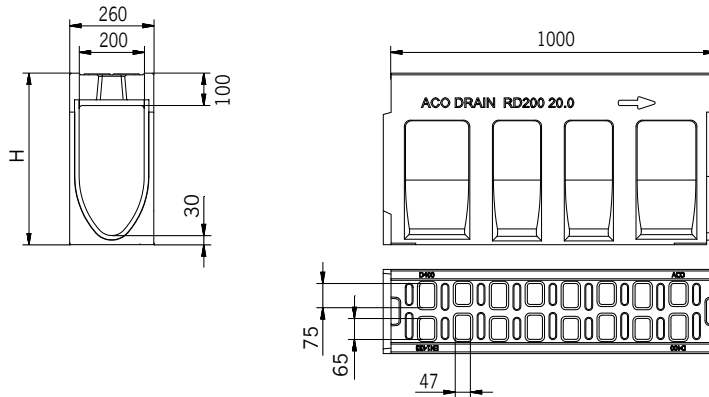
www.aco.com

Monocast polymer concrete channel anthracite or natural

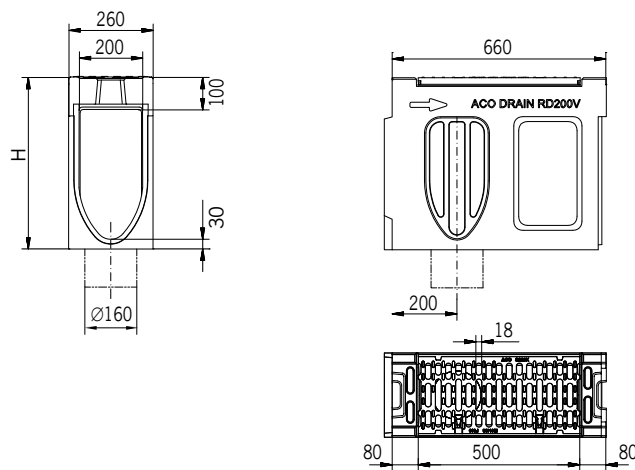
V cross-section

Clear width 20.0 cm

Maximum load class D 400 - F 900, compliant with EN 1433:2005



ACO Drain® Monoblock RD 200V channel size



ACO Drain® Monoblock RD 200V access unit size



ACO Drain® Monoblock RD 200V line drainage system

TECHNICAL DETAILS

www.aco.com

Monocast polymer concrete channel anthracite or natural

V cross-section

Clear width 20.0 cm

Maximum load class D 400 - F 900, compliant with EN 1433:2005

| Type | Length | Width | Height | Inlet area | Weight | Part no. | | |
|------|--------|-------|--------|--------------------|--------|----------------|------------|---------|
| | cm | cm | cm | cm ² /m | kg | anthracite mix | anthracite | natural |

Sump unit

made of polymer concrete, anthracite or natural, as an access unit made of ductile iron (GGG) grating, load class F 900, with the Powerlock® locking spring, possibility of additional sealing with a sealant (SF)

| | | | | | | | |
|----------------------|------|------|------|-----|------|--------|--------|
| Top section 0.0 | 66,0 | 26,0 | 36,0 | 935 | 48,0 | 130058 | 130022 |
| Top section 20.0 | 66,0 | 26,0 | 56,0 | 935 | 65,0 | 130059 | 130023 |
| Bottom section Ø 160 | 50,0 | 23,0 | 36,6 | — | 26,5 | 10935 | |
| Bottom section Ø 200 | 50,0 | 23,0 | 36,5 | — | 26,5 | 10936 | |
| Silt basket | | | | | | 13999 | |

End cap

made of polymer concrete, anthracite or natural, with a Ø 160 lip labyrinth gasket

| | | | | | | | |
|---|-----|------|------|---|------|--------|--------|
| End cap to close the beginning of the channel | | | | | | | |
| 0.0 | 7,0 | 26,0 | 33,0 | - | 9,0 | 130044 | 130008 |
| 20.0 | 7,0 | 26,0 | 53,0 | - | 12,4 | 130045 | 130009 |
| End cap to close the end of the channel | | | | | | | |
| 0.0 | 7,0 | 26,0 | 33,0 | - | 10,0 | 130046 | 130010 |
| 20.0 | 7,0 | 26,0 | 53,0 | - | 14,9 | 130047 | 130011 |

End cap with gasket

made of polymer concrete, anthracite or natural, with a Ø 160 lip labyrinth gasket

| | | | | | | | |
|------|-----|------|------|---|------|--------|--------|
| 0.0 | 7,0 | 26,0 | 33,0 | - | 8,5 | 130048 | 130012 |
| 20.0 | 7,0 | 26,0 | 53,0 | - | 13,1 | 130049 | 130013 |

Reverse flow adapter

made of polymer concrete, anthracite or natural

| | | | | | | | |
|------|-----|------|------|---|-----|--------|--------|
| 0.0 | 8,2 | 26,0 | 33,0 | - | 7,6 | 130050 | 130014 |
| 20.0 | 8,2 | 26,0 | 53,0 | - | 9,8 | 130051 | 130015 |

Side connection adapter

made of polymer concrete, anthracite or natural

| | | | | | | | |
|------|-----|------|------|---|-----|--------|--------|
| 0.0 | 7,0 | 26,0 | 33,0 | - | 7,2 | 130056 | 130020 |
| 20.0 | 7,0 | 26,0 | 53,0 | - | 9,3 | 130057 | 130021 |

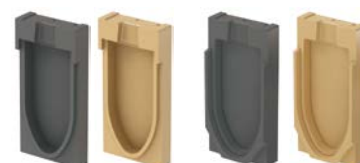
Smaller inflow slot at channel joint



Monoblock RD 200V sump unit, natural



Monoblock RD 200V sump unit, natural



Monoblock RD 200V end cap to close the beginning of the channel

Monoblock RD 200V end cap to close the end of the channel



Monoblock RD 200V end cap with gasket



Monoblock RD 200V reverse flow adapter

Monoblock RD 200V side connection adapter

ACO Drain® Monoblock RD 200V line drainage system

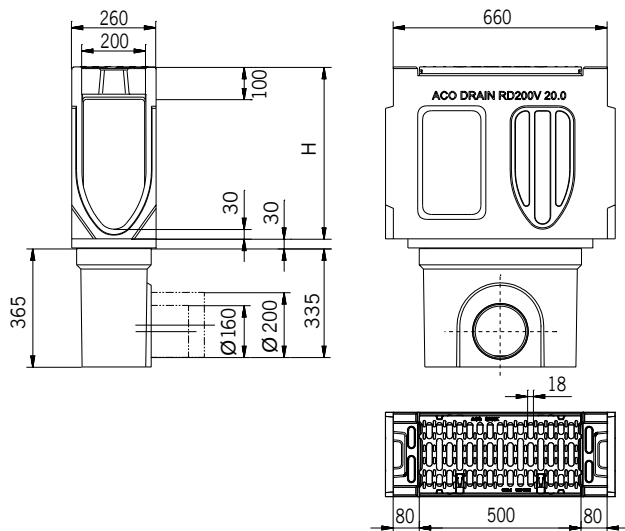
TECHNICAL DETAILS
www.aco.com

Monocast polymer concrete channel anthracite or natural

V cross-section

Clear width 20.0 cm

Maximum load class D 400 - F 900, compliant with EN 1433:2005



ACO Drain® Monoblock RD 200V sump unit size



ACO Drain® Monoblock RD 200V line drainage system

TECHNICAL DETAILS
www.aco.com

Monocast polymer concrete channel natural color

V cross-section

Clear width 20.0 cm

Maximum load class D 400 - F 900, compliant with EN 1433:2005

| Type | Length | Width | Height | Inlet area | Weight | Part no. |
|------|--------|-------|--------|--------------------|--------|----------|
| | cm | cm | cm | cm ² /m | kg | |

Monolithic channel

made of polymer concrete, natural, with additional sealing with a sealant (SF) possible

D 400 - F 900

| | | | | | | |
|------|-------|------|------|-----|-------|-------|
| 0.0 | 100,0 | 26,0 | 33,0 | 583 | 90,0 | 10908 |
| 20.0 | 100,0 | 26,0 | 53,0 | 583 | 111,0 | 10928 |

Access unit

made of polymer concrete, natural, with ductile iron (GGG) grating, load class F 900, with the Powerlock® locking spring, possibility of additional sealing with a sealant (SF), with a Ø 160 lip labyrinth gasket

| | | | | | | |
|-----------------------|------|------|------|-----|------|-------|
| 0.1 ^{2) 3)} | 66,0 | 26,0 | 33,0 | 935 | 51,6 | 10901 |
| 20.1 ^{2) 3)} | 66,0 | 26,0 | 53,0 | 935 | 67,6 | 10921 |
| 0.2 ^{1) 2)} | 66,0 | 26,0 | 33,0 | 935 | 51,0 | 10939 |
| 20.2 ^{1) 2)} | 66,0 | 26,0 | 53,0 | 935 | 67,0 | 10937 |

¹⁾ Trench with an outlet Ø 160 in the bottom, with a lip labyrinth gasket for a watertight vertical connection to the sewerage.

²⁾ Trench with side furrows to make angle joints, T-joints and cross-joints.

³⁾ Trench with furrows in the bottom, to make a vertical opening for the Ø 160 outlet.

Larger inflow slot at channel joint



Monoblock RD 200V monocast channel, 1 m, natural



Monoblock RD 200V access unit, natural

ACO Drain® Monoblock RD 200V line drainage system

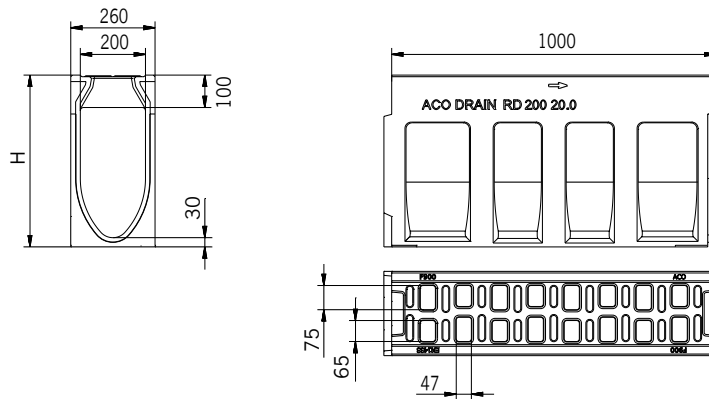
TECHNICAL DETAILS
www.aco.com

Monocast polymer concrete channel natural color

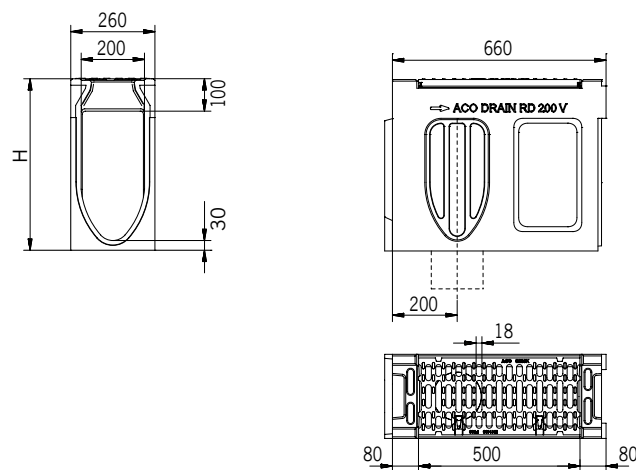
V cross-section

Clear width 20.0 cm

Maximum load class D 400 - F 900, compliant with EN 1433:2005



ACO Drain® Monoblock RD 200V channel size



ACO Drain® Monoblock RD 200V access unit size



ACO Drain® Monoblock RD 200V line drainage system

TECHNICAL DETAILS

www.aco.com

Monocast polymer concrete channel natural color

V cross-section

Clear width 20.0 cm

Maximum load class D 400 - F 900, compliant with EN 1433:2005

| Type | Length | Width | Height | Inlet area | Weight | Part no. |
|------|--------|-------|--------|--------------------|--------|----------|
| | cm | cm | cm | cm ² /m | kg | |

Sump unit

made of polymer concrete, natural, as an access unit made of ductile iron (GGG) grating, load class F 900, with the Powerlock® locking spring, possibility of additional sealing with a sealant (SF)

| | | | | | | |
|----------------------|------|------|------|-----|------|-------|
| Top section 0.0 | 66,0 | 26,0 | 36,0 | 935 | 48,0 | 10902 |
| Top section 20.0 | 66,0 | 26,0 | 56,0 | 935 | 65,0 | 10922 |
| Bottom section Ø 160 | 50,0 | 23,0 | 36,6 | — | 26,5 | 10935 |
| Bottom section Ø 200 | 50,0 | 23,0 | 36,5 | — | 26,5 | 10936 |
| Silt basket | | | | | | 13999 |

Larger inflow slot at channel joint



Monoblock RD 200V sump unit, natural

End cap

made of polymer concrete, natural, with a Ø 160 lip labyrinth gasket

| | | | | | | |
|---|-----|------|------|---|------|-------|
| End cap to close the beginning of the channel | | | | | | |
| 0.0 | 7,0 | 26,0 | 33,0 | - | 8,6 | 10905 |
| 20.0 | 7,0 | 26,0 | 53,0 | - | 12,0 | 10925 |
| End cap to close the end of the channel | | | | | | |
| 0.0 | 7,0 | 26,0 | 33,0 | - | 8,8 | 10904 |
| 20.0 | 7,0 | 26,0 | 53,0 | - | 13,6 | 10924 |



Monoblock RD 200V end cap, natural

End cap with gasket

made of polymer concrete, natural, with a Ø 160 lip labyrinth gasket

| | | | | | | |
|------|-----|------|------|---|------|-------|
| 0.0 | 7,0 | 26,0 | 33,0 | - | 7,4 | 10906 |
| 20.0 | 7,0 | 26,0 | 53,0 | - | 12,2 | 10926 |



Monoblock RD 200V end cap with gasket, natural

Reverse flow adapter

made of polymer concrete, natural

| | | | | | | |
|------|-----|------|------|---|-----|-------|
| 0.0 | 8,2 | 26,0 | 33,0 | - | 7,6 | 10907 |
| 20.0 | 8,2 | 26,0 | 53,0 | - | 9,8 | 10927 |



Monoblock RD 200V reverse flow adapter, natural

Side connection adapter

made of polymer concrete, natural

| | | | | | | |
|------|-----|------|------|---|-----|-------|
| 0.0 | 7,0 | 26,0 | 33,0 | - | 7,2 | 10903 |
| 20.0 | 7,0 | 26,0 | 53,0 | - | 9,3 | 10923 |



Monoblock RD 200V side connection adapter, natural

ACO Drain® Monoblock RD 200V line drainage system

TECHNICAL DETAILS

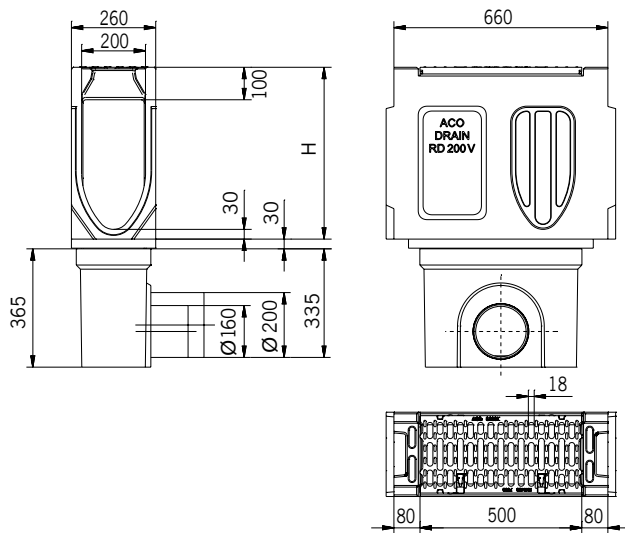
www.aco.com

Monocast polymer concrete channel natural color

V cross-section

Clear width 20.0 cm

Maximum load class D 400 - F 900, compliant with EN 1433:2005



ACO Drain® Monoblock RD 200V sump unit size

Line drainage



ACO Drain® Monoblock RD 300 line drainage system

TECHNICAL DETAILS

www.aco.com

Monocast polymer concrete channel natural color

Clear width 30.0 cm

Maximum load class D 400 - F 900, compliant with EN 1433:2005

| Type | Length | Width | Height | Inlet area | Weight | Part no. |
|------|--------|-------|--------|--------------------|--------|----------|
| | cm | cm | cm | cm ² /m | kg | natural |

Channel

made of polymer concrete, natural, with additional sealing with a sealant (SF) possible

| | | | | | | |
|--------------|-------|------|------|-----|-------|-------|
| Trench F 900 | 200,0 | 40,0 | 59,5 | 800 | 484,0 | 10820 |
|--------------|-------|------|------|-----|-------|-------|



Monoblock RD 300 monocast channel, 2.0 m, natural

| Type | Length | Width | Height | Weight | Part no. |
|------|--------|-------|--------|--------|----------|
| | cm | cm | cm | kg | |

Access unit

made of polymer concrete, natural, with a ductile iron grating, load class F 900, with the Powerlock® locking spring, with possibility of additional sealing with a sealant (SF)

| | | | | | |
|-----|------|------|------|-------|-------|
| 0.1 | 75,0 | 40,0 | 64,5 | 219,0 | 10803 |
|-----|------|------|------|-------|-------|



Monoblock RD 300 access unit, natural

ACO Drain® Monoblock RD 300 line drainage system

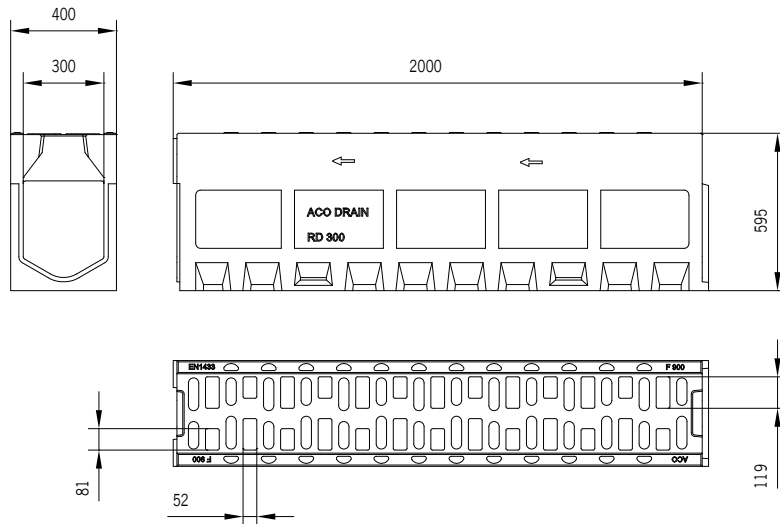
Monocast polymer concrete channel natural color

Clear width 30.0 cm

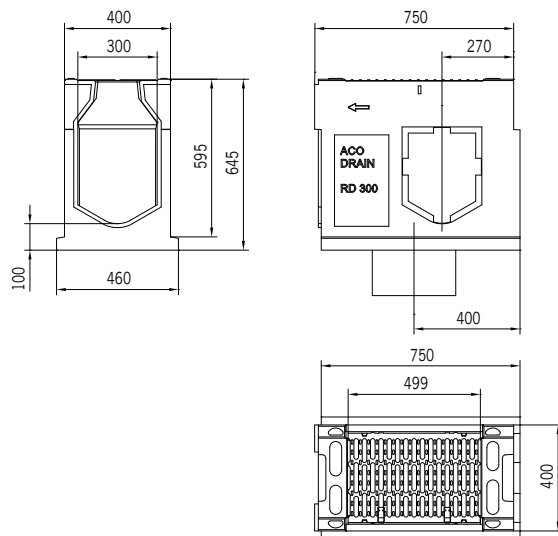
Maximum load class D 400 - F 900, compliant with EN 1433:2005

TECHNICAL DETAILS

www.aco.com



ACO Drain® Monoblock RD 300 channel size



ACO Drain® Monoblock RD 300 access unit size



ACO Drain® Monoblock RD 300 line drainage system

TECHNICAL DETAILS

www.aco.com

Monocast polymer concrete channel natural color

Clear width 30.0 cm

Maximum load class D 400 - F 900, compliant with EN 1433:2005

| Type | Length | Width | Height | Weight | Part no. |
|------|--------|-------|--------|--------|----------|
| | cm | cm | cm | kg | |

Sump unit

made of polymer concrete¹⁾, natural, with cast iron grating, load class F 900, with the Powerlock® locking spring, possibility of additional sealing with a sealant (SF), with a Ø 400 lip labyrinth gasket

| | | | | | |
|---|------|------|------|-------|-------|
| Top section | 75,0 | 40,0 | 64,0 | 214,0 | 10821 |
| Mid section | | 40,0 | 33,0 | 72,0 | 10822 |
| Bottom section Ø 400 | | 40,0 | 71,5 | 168,0 | 10823 |
| Adapter to suspend the basket ²⁾ | | | | 1,7 | 10824 |
| Basket for the box | | | | 6,2 | 01617 |

Side connection adapter

| | | | | |
|---------|------|------|------|-------|
| Adapter | 40,0 | 59,5 | 29,2 | 10804 |
|---------|------|------|------|-------|

End cap

made of polymer concrete, to close the beginning and end of the channel

| | | | | |
|--|------|------|------|-------|
| End cap to close the beginning of the channel | 40,0 | 59,5 | 31,2 | 10802 |
| End cap to close the end of the channel | 40,0 | 59,5 | 38,8 | 10801 |

End cap with gasket

to close the end of the channel, with integrated Ø 300 lip labyrinth gasket

| | | | | |
|--|------|------|------|-------|
| End cap with gasket to close the beginning of the channel | 40,0 | 59,5 | 29,5 | 10805 |
|--|------|------|------|-------|

Reverse flow adapter

made of polymer concrete

| | | | | |
|---------|------|------|------|-------|
| Adapter | 40,0 | 59,5 | 34,0 | 10806 |
|---------|------|------|------|-------|

¹⁾ with side furrows to connect the channel

²⁾ 2 units per 1 basket are needed



Monoblock RD 300 sump unit, natural

Monoblock RD 300
side connection
adapter, naturalMonoblock RD 300
end cap to close
the beginning of the
channel, naturalMonoblock RD 300
end cap to close the
end of the channel,
naturalMonoblock RD 300
end cap with gasket,
naturalMonoblock RD 300
reverse flow adapter,
natural

ACO Drain® Monoblock RD 300 line drainage system

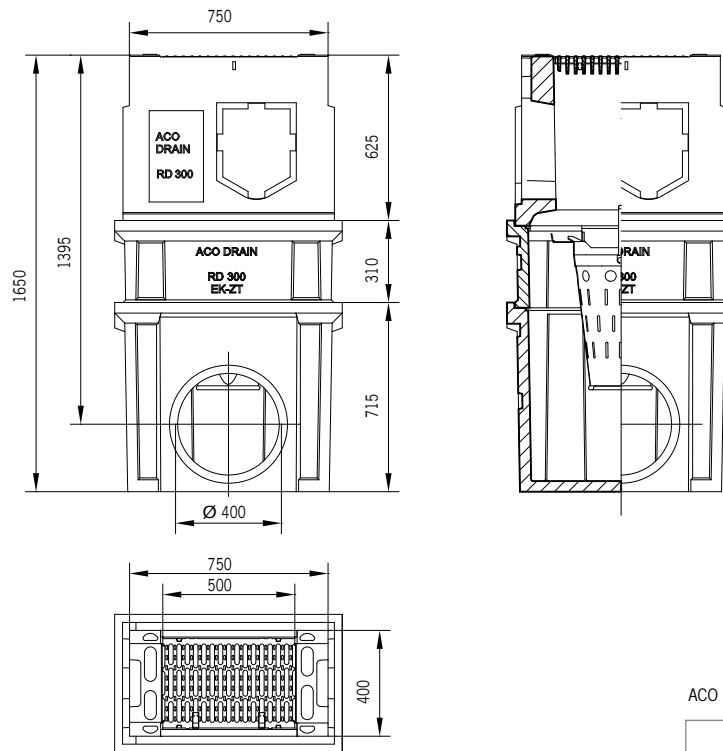
Monocast polymer concrete channel natural color

Clear width 30.0 cm

Maximum load class D 400 - F 900, compliant with EN 1433:2005

TECHNICAL DETAILS

www.aco.com



ACO Drain® Monoblock RD 300 sump unit size

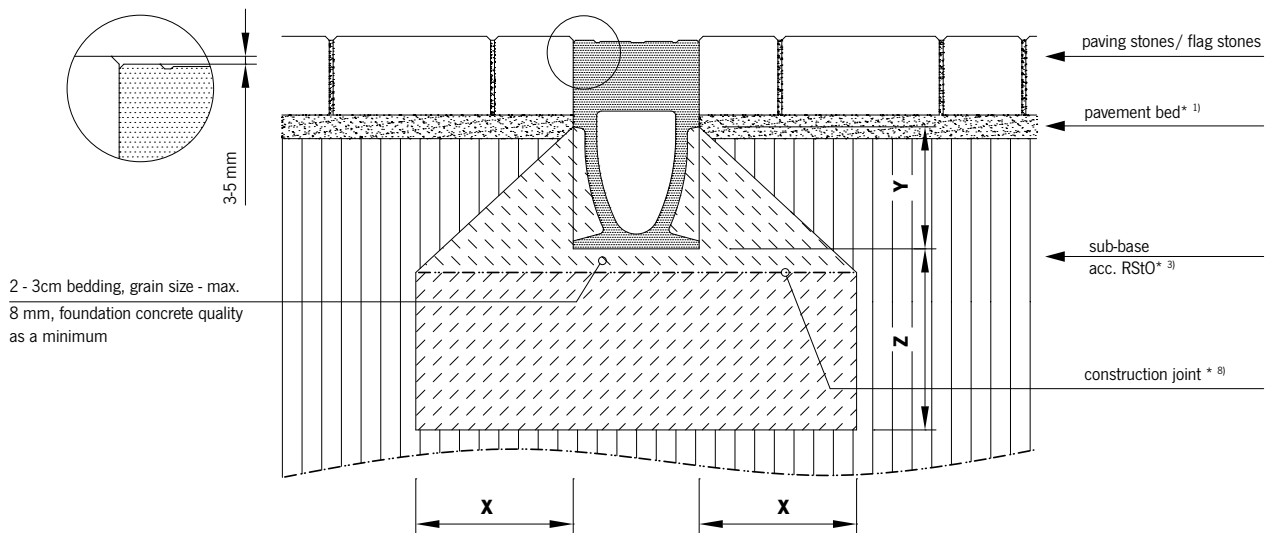


ACO Drain® Monoblock RD 100V / 150V / 200V / 300

TECHNICAL DETAILS

www.aco.com

Installation in concrete pavement, class C 250 / D 400



*..) see the list of subscripts in preliminary notes to our installation manual

Special installation conditions *19)

| Load class | (acc. DIN EN 1433) | A 15 | B 125 | C 250 | D 400 | | |
|--|---------------------|------|-------|---------------------------------|-----------|--|--|
| Compressive strength class - foundation concrete | (acc. DIN EN 206-1) | | | ≥ C 20/25 | ≥ C 20/25 | | |
| Exposure class - foundation concrete *16) | | | | (X0) | (X0) | | |
| Foundation dimensions - Type: M (acc. DIN EN 1433) | X [cm] | | | ≥ 15 | ≥ 15 | | |
| | Y [cm] | | | upper edge of anchor pocket *2) | | | |
| | Y [cm] | | | ≥ 15 | ≥ 20 | | |

Valid only in connection with general notes to our installation manual! Download from www.aco-tiefbau.de

Drawing G1-E01-930-3.1, Version 12.09

Installation in concrete pavement, class – D 400 through F 900

Special installation conditions *19)

| Load class | (acc. DIN EN 14333) | A 15 | B 125 | C 250 | D 400 | E 600 | F 900 |
|---|---------------------|------|-------|-------|--------------------|-----------|------------------------------|
| Compressive strength class - foundation concrete | (acc. DIN EN 206-1) | | | | ≥ C 25/30 | ≥ C 25/30 | object-specific |
| Exposure class - foundation concrete *16) | | | | | (X0) | (X0) | will be advised upon request |
| Foundation dimensions - Type: M (acc. DIN EN 14333) | X [cm] | | | | ≥ 20 | ≥ 20 | |
| | Y [cm] | | | | UK - border stones | | |
| | Y [cm] | | | | ≥ 20 | ≥ 20 | |

Valid only in connection with general notes to our installation manual! Download from www.aco-tiefbau.de

Drawing G1-E01-930-3.2, Version 12.09

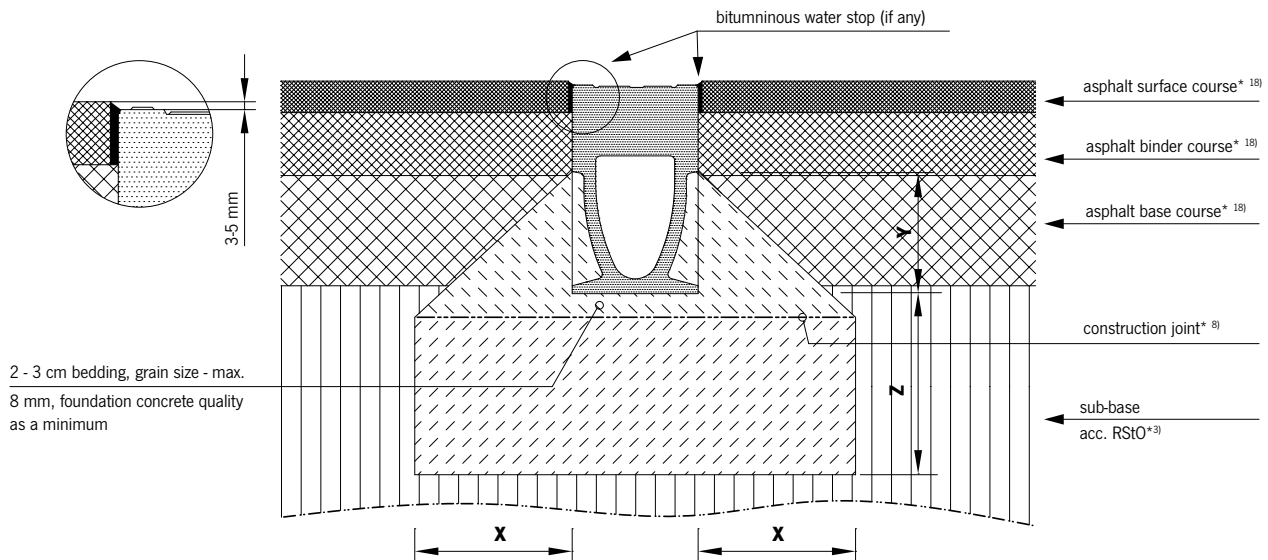


ACO Drain® Monoblock RD 100V / 150V / 200V / 300

TECHNICAL DETAILS

www.aco.com

Installation in asphalt, class – C 250 / D 400



*) see the list of subscripts in preliminary notes to our installation manual

Special installation conditions *¹⁹⁾

| Load class | (acc. DIN EN 1433) | A 15 | B 125 | C 250 | D 400 | E 600 | |
|---|---------------------|------|-------|---|-----------|-------|--|
| Compressive strength class - foundation concrete | (acc. DIN EN 206-1) | | | ≥ C 20/25 | ≥ C 20/25 | | |
| Exposure class - foundation concrete * ¹⁶⁾ | | | | (X0) | (X0) | | |
| Foundation dimensions - Type: M (acc. DIN EN 1433) | X [cm] | | | ≥ 15 | ≥ 25 | | |
| | Y [cm] | | | upper edge of anchor pocket ²⁾ | | | |
| | Y [cm] | | | ≥ 20 | ≥ 20 | | |

Valid only in connection with general notes to our installation manual! Download from www.aco-tiefbau.de

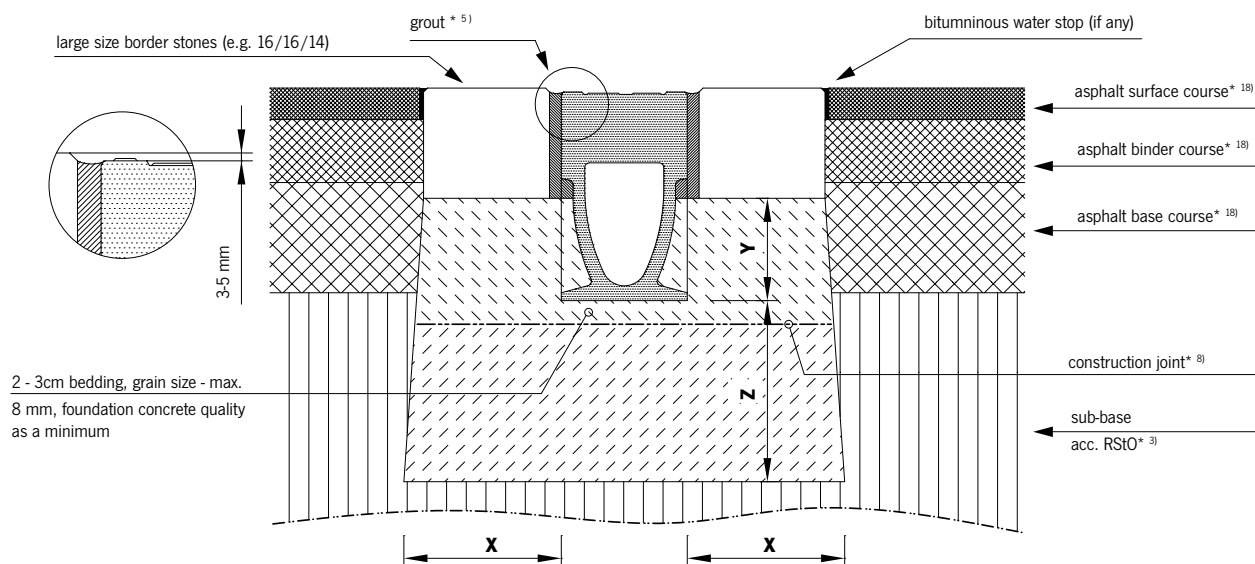
Drawing G1-E01-931-3.1, Version 12.09

ACO Drain® Monoblock RD 100V / 150V / 200V / 300

TECHNICAL DETAILS

www.aco.com

Installation in asphalt, class –D 400 through F 900



*) see the list of subscripts in preliminary notes to our installation manual

Special installation conditions *19)

| Load class | (acc. DIN EN 1433) | A 15 | B 125 | C 250 | D 400 | E 600 | F 600 |
|--|---------------------|------|-------|-------|--------------------|-----------|------------------------------|
| Compressive strength class - foundation concrete | (acc. DIN EN 206-1) | | | | ≥ C 20/30 | ≥ C 20/30 | object-specific |
| Exposure class - foundation concrete *16) | | | | | (X0) | (X0) | will be advised upon request |
| Foundation dimensions - Type: M (acc. DIN EN 1433) | X [cm] | | | | ≥ 20 | ≥ 20 | |
| | Y [cm] | | | | UK - border stones | | |
| | Y [cm] | | | | ≥ 20 | ≥ 20 | |

Valid only in connection with general notes to our installation manual! Download from www.aco-tiefbau.de

Drawing G1-E01-931-3.2, Version 12.09

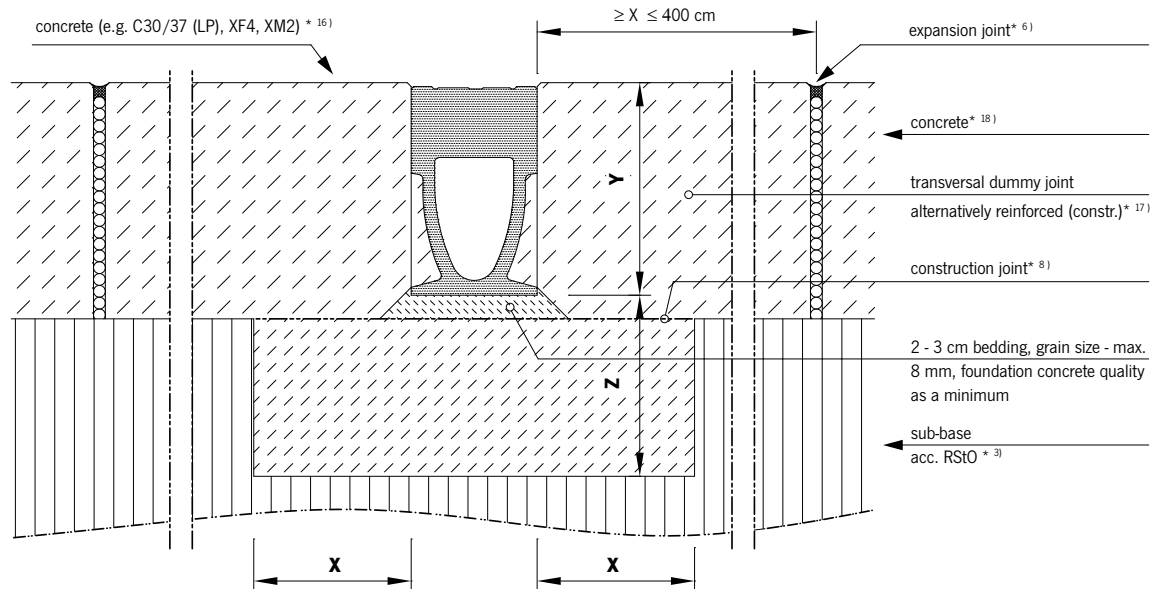


ACO Drain® Monoblock RD 100V / 150V / 200V / 300

TECHNICAL DETAILS

www.aco.com

Installation in concrete, class – D 400 through F 900



*.) see the list of subscripts in preliminary notes to our installation manual

Special installation conditions *19)

| Load class | (acc. DIN EN 1433) | A 15 | B 125 | C 250 | D 400 | E 600 | F 600 |
|--|---------------------|------|-------|-------|---------------------------------------|-----------|------------------------------|
| Compressive strength class - foundation concrete | (acc. DIN EN 206-1) | | | | ≥ C 20/30 | ≥ C 20/30 | object-specific |
| Exposure class - foundation concrete *16) | | | | | (X0) | (X0) | will be advised upon request |
| Foundation dimensions - Type: M (acc. DIN EN 1433) | X [cm] | | | | ≥ 20 | ≥ 20 | |
| | Y [cm] | | | | Construction height of trough element | | |
| | Y [cm] | | | | ≥ 20 | ≥ 20 | |

Valid only in connection with general notes to our installation manual! Download from www.aco-tiefbau.de

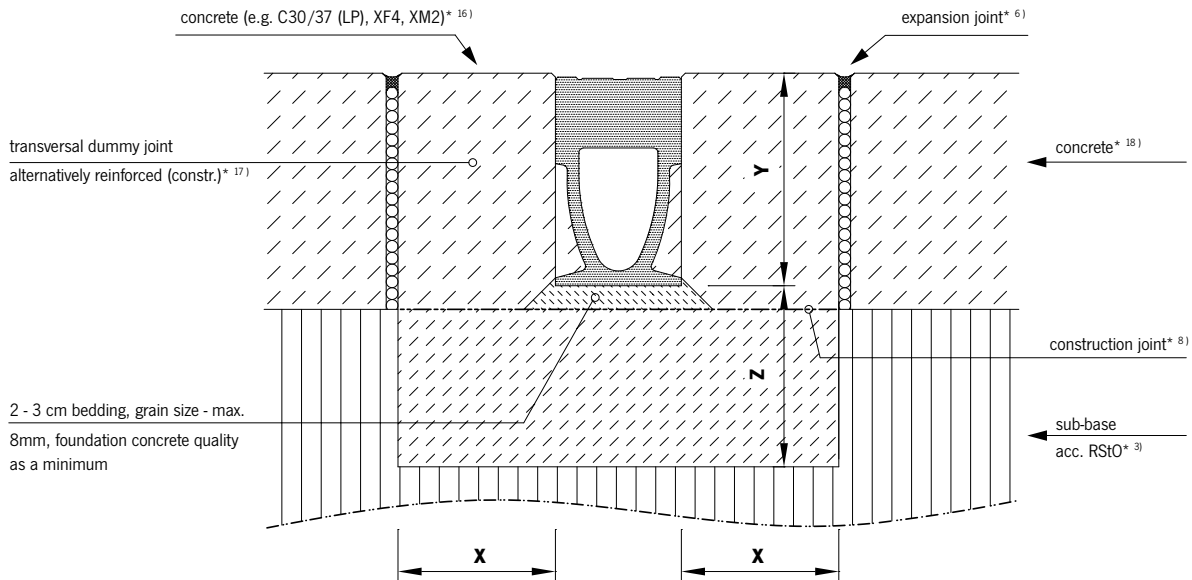
Drawing G1-E01-932-3.1, Version 12.09

ACO Drain® Monoblock RD 100V / 150V / 200V / 300

TECHNICAL DETAILS

www.aco.com

Installation in concrete, class – D 400 through F 900



*..) see the list of subscripts in preliminary notes to our installation manual

Special installation conditions *19)

| Load class | (acc. DIN EN 1433) | A 15 | B 125 | C 250 | D 400 | E 600 | F 600 |
|--|---------------------|------|-------|-------|--|-----------|------------------------------------|
| Compressive strength class - foundation concrete | (acc. DIN EN 206-1) | | | | ≥ C 20/30 | ≥ C 20/30 | object-specific |
| Exposure class - foundation concrete *16) | | | | | (X0) | (X0) | will be advised upon request |
| Foundation dimensions - Type: M (acc. DIN EN 1433) | X [cm] | | | | ≥ 20 | ≥ 20 | |
| | Y [cm] | | | | Construction height of trough element | | |
| | Y [cm] | | | | ≥ 20 | ≥ 20 | |

Valid only in connection with general notes to our installation manual! Download from www.aco-tiefbau.de

Drawing G1-E01-932-3.2, Version 12.09

ACO Elementy Budowlane Sp. z o.o.

ul. Fabryczna 5, Łąjski

05-119 Legionowo

Tel. 22 76 70 500

Fax. 22 76 70 513

www.aco.pl

- Line drainage
- Home and garden area drainage
- Lightshafts and windows
- Bathroom drainage
- Stainless steel
- Oil separators
- Grease separators
- Cast iron hatches
- Cast iron inlets

