



ACO Easyline H50

The Next Generation of plastic
drainage systems

ACO Easyline H50

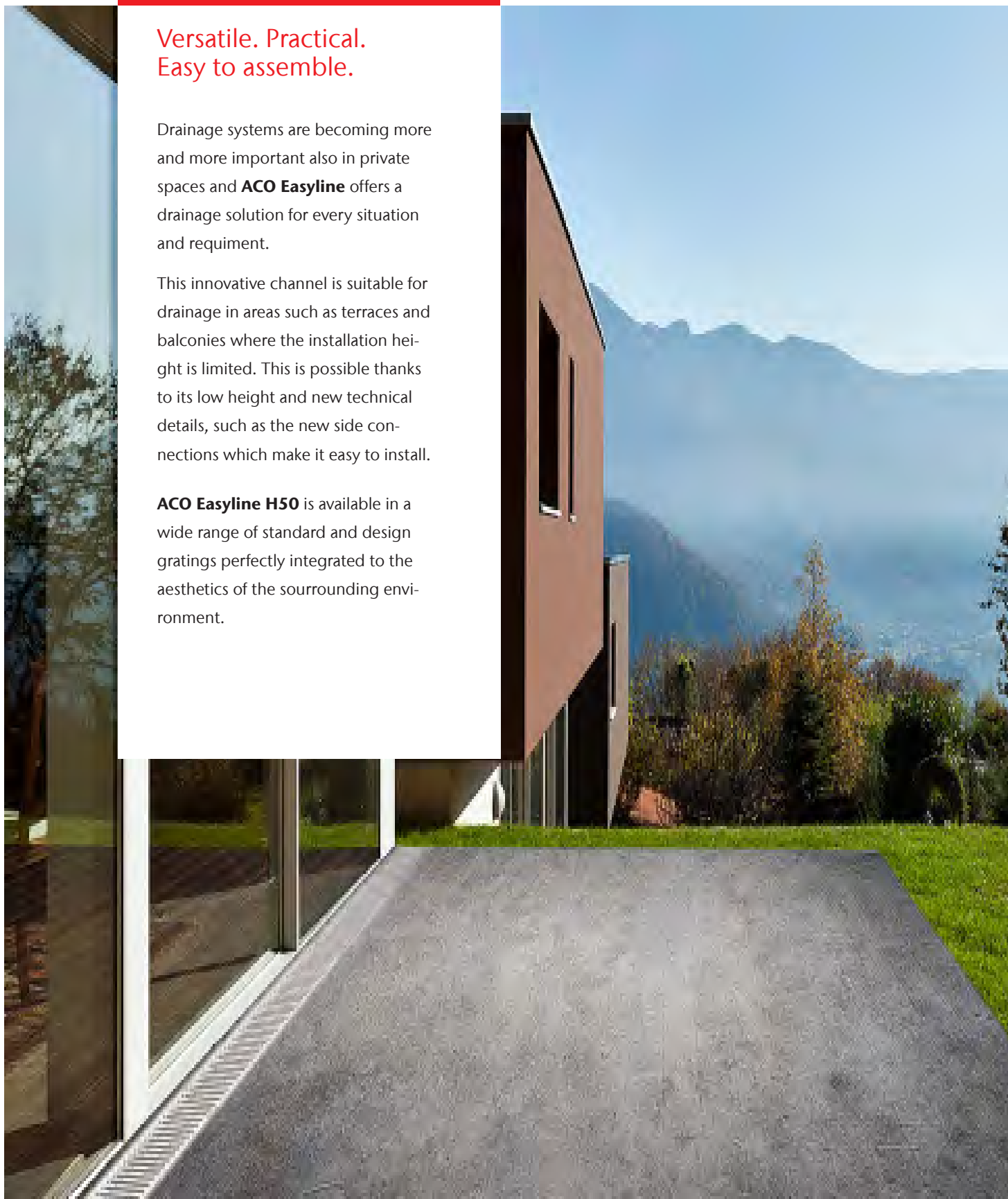
The Next Generation Channel

Versatile. Practical. Easy to assemble.

Drainage systems are becoming more and more important also in private spaces and **ACO Easyline** offers a drainage solution for every situation and requirement.

This innovative channel is suitable for drainage in areas such as terraces and balconies where the installation height is limited. This is possible thanks to its low height and new technical details, such as the new side connections which make it easy to install.

ACO Easyline H50 is available in a wide range of standard and design gratings perfectly integrated to the aesthetics of the surrounding environment.



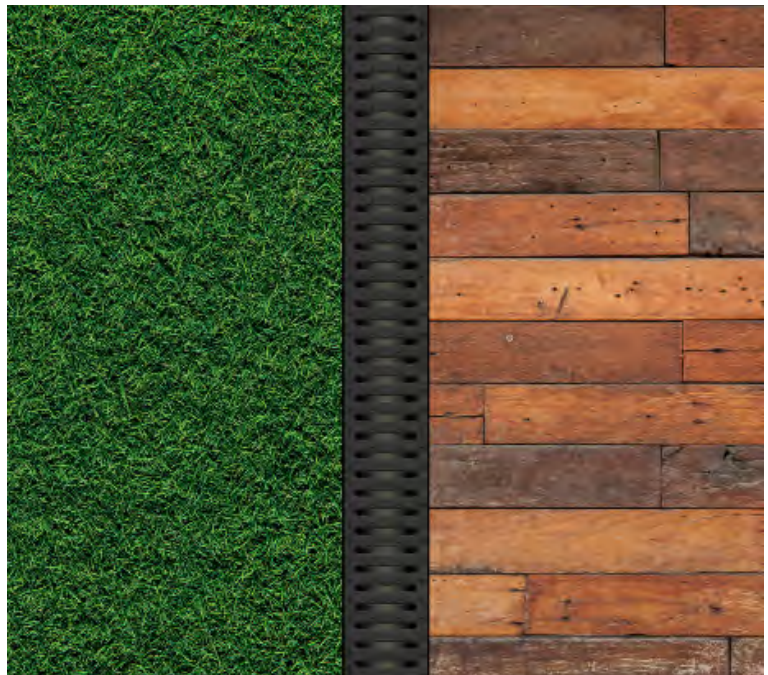


Main features

- Certified in accordance to EN1433
- Easy to assemble
- High mechanical and chemical resistance
- Light weight
- Easy to carry
- Total height 50mm
- Plastic rail 5mm thickness
- 3 standard gratings
- 4 design gratings
- Load class: A15, B125

Applications

- Terraces
- Balconies
- Gardens
- Façade drainage
- Residential developments
- Low heigh installation
- Renovation



ACO Easyline H50 The Innovative Design

A complete system with many advantages and possibilities

- 1 VERTICAL OUTLET ADAPTER installed with one “turn and click”
- 2 CLOSED END CAP
- 3 OPEN END CAP Ø32, can be installed in 5 different positions, lateral or head position



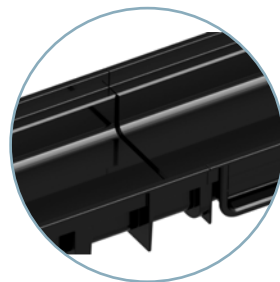
- 4 4 SIDE CONNECTIONS make it easy to install “L” or “T” shape drainage solutions
- 5 GRATINGS in different materials and design Load class A15 and B125
- 6 PLASTIC RAIL 5mm traffic exposure in accordance to DIN 19580
- 7 SEALING JOINT, it is possible to connect the two channels and seal male/female connection, plus additional sealing for yearly maintenance.

Innovative features for an easy installation

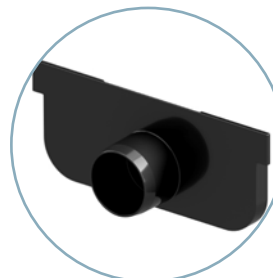
5

ACO Easyline H50 Advantages

- The new connections allow to create T and L shape without using special pieces and without discontinuity for the drainage line
- Practical to be assembled, male and female and sealing joint in the dedicated area
- Accessories that can be used in different positions and can be used to add drainage capacity
- The low height of the channel, only 50mm total



SEALING JOINT: the connection of the two channels create an area that can be used to position the sealant. The bituminous sealant can guarantee a perfect water tight drainage line.



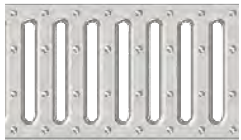
OPEN END CAP can be installed in 5 different positions and it can be used in case of necessity to increase the capacity of water outflow.

Standard gratings with classic but sophisticated details



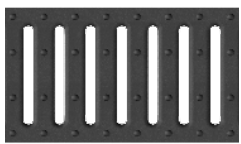
1. Ductile iron standard grating 6mm slot

One ductile iron grating. The robust material and slot positioning have been quality features for years. The cast iron grating is particularly suitable for areas subjected to car traffic, for example in front of a garage.



2. Galvanized or stainless steel standard grating 8mm slot

The galvanized steel slot grating is well known in the market. The grating is distinguished by its simplicity and functionality. In addition, the high quality can assure an extremely durable solution.



3. PP/PE standard grating 8mm slot

The PP/PE grating is lightweight and has a great chemical resistance. Completely recyclable and durable. It is resistant to water, saline solution, alcohol and does not absorb liquids.

Design gratings to meet your aesthetics

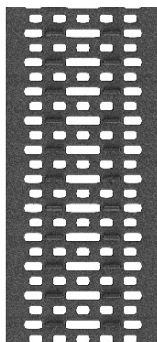
Customer is more and more attracted to the design of the surroundings and he needs to include drainage channels as an architectural design element, especially in his own home, garden or terrace.

ACO Easyline H50 and the new design gratings can be assembled in harmony with their surrounding areas. Now the drainage channel is no longer just a water conveying system, but it can increase the beauty of the areas maintaining its technical efficiency.

Coming soon...



SLIM Grating
Galvanized and
Stainless steel



PP-GF grating



Ductile iron
grating



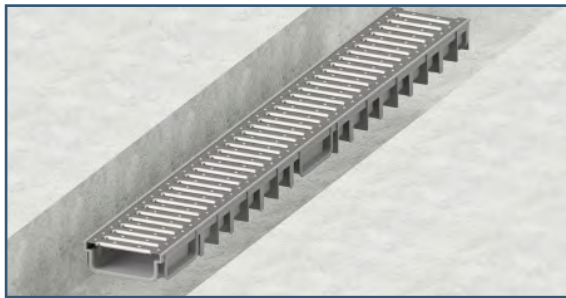
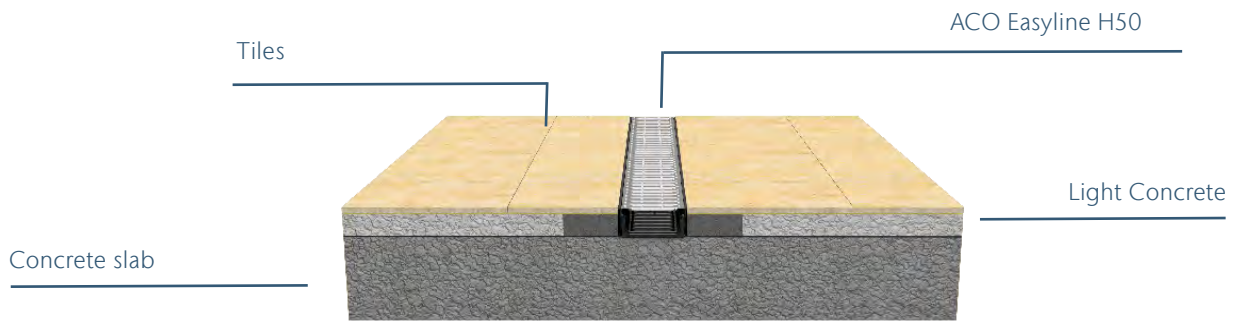
Slot grating

New design gratings

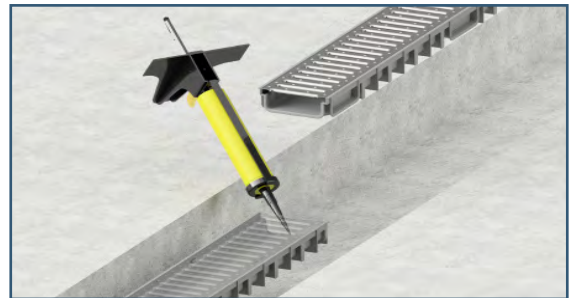
- 4 new design gratings in different materials
- Gratings load class: A15, B125

ACO Easyline H50, Installation

How to install the drainage channel correctly



1. Place the channel with the installed grating inside the trench.
It is suitable to protect the grating with a PVC film during the installation, to avoid any concrete residues.



2. Apply the sealant on the of the connection area (male/female) and install the channels.
Verify that the drainage line respects all the relative quotes.

7



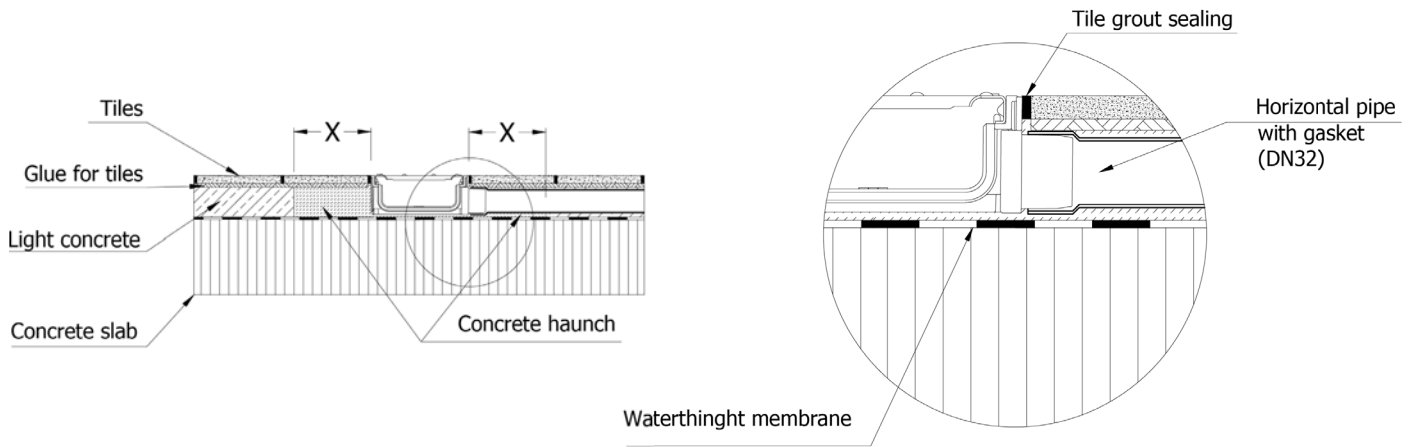
3. Create your drainage line and put the end caps.
If necessary open the side connections and use pipes.



4. Finally fill the trench with concrete in order to completely fill and close all the spaces left free around the channels.

...Easy installation for a perfect result

Example: Installation on concrete slab with horizontal outlet

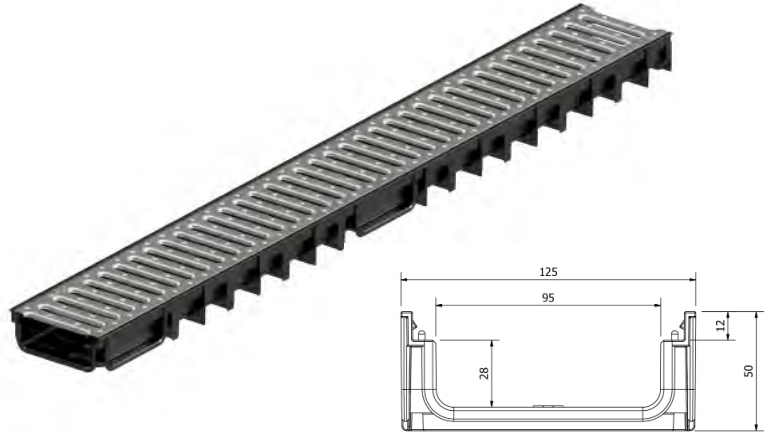


Load Class	(ref. EN 1433)	A 15	B 125	C 250	D 400	E 600	F 900
Quality for Bedding & Haunch Concrete (Min)	(ref. EN 206-1)	C20/25	On request				
Quality for Bedding & Haunch Concrete (Min) in area with frost cycle		C30/37 XF40	On request				
Bedding Dimensions (Min)	X (Cm)	10	On request				
	Y (Cm)	Height of the channel					
	Z (Cm)	10	On request				

ACO Easyline H50

Product information

- Plastic Channel
- 4 side connections each channel
- Plastic rail 5mm thickness
- Gratings load classes A15, B125
- Built-in fixing system
- Available in Black and Grey color



ACO Easyline H50 BLACK

Grating Type	Load Class	Slot [mm]	Dimensions			Pc/Pal [n.]	Artic. Num.
			Length [mm]	Width [mm]	Height [mm]		
PP-PE	A 15	8	1000	125	50	198	330004
Galvanized steel	A 15	8	1000	125	50	198	330000
Stainless steel	A 15	8	1000	125	50	198	330002
Ductile iron	B125	6	1000	125	50	198	330006
DESIGN GRATING Galvanized Steel SLIM	A 15	5	1000	125	50	198	330008
DESIGN GRATINGS Stainless Steel SLIM	A 15	5	1000	125	50	198	330012

ACO Easyline H50 BLACK Kit

Description	Pc/Box [n.]	Artic. Num.
ø110 vertical outlet + num.2 ø32 end cap outlet + num.1 closing end cap	50	330020
ø32 end cap outlet + num.1 closing end cap	100	330040

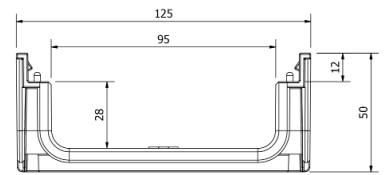
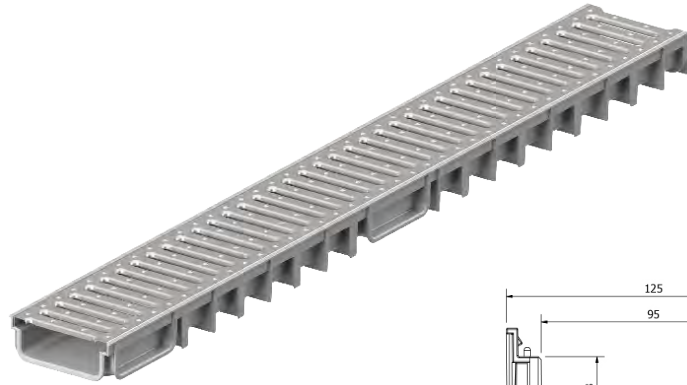
ACO Easyline H50 BLACK Accessories

Description	Pc/Box [n.]	Artic. Num.
ø110 vertical outlet	100	319764
ø32 end cap outlet	100	330042
Closing end cap	100	330044

ACO Easyline H50

Product information

- Plastic Channel
- 4 side connections each channel
- Plastic rail 5mm thickness
- Gratings load classes A15, B125
- Built-in fixing system
- Available in Black and Grey color



ACO Easyline H50 GREY

Grating Type	Load Class	Slot [mm]	Dimensions			Pc/Pal [n.]	Artic. Num.
			Length [mm]	Width [mm]	Height [mm]		
PP-PE	A 15	8	1000	125	50	198	330200
Galvanized steel	A 15	8	1000	125	50	198	330202
Stainless steel	A 15	8	1000	125	50	198	330204
Ductile iron	B125	6	1000	125	50	198	330210
DESIGN GRATING Galvanized Steel SLIM	A 15	5	1000	125	50	198	330206
DESIGN GRATING Stainless Steel SLIM	A 15	5	1000	125	50	198	330208

ACO Easyline H50 GREY Kit

Description	Pc/Box [n.]	Artic. Num.
ø110 vertical outlet + num.2 ø32 end cap outlet + num.1 closing end cap	50	330236
ø32 end cap outlet + num.1 closing end cap	100	330238

ACO Easyline H50 GREY Accessories

Description	Pc/Box [n.]	Artic. Num.
ø110 vertical outlet	100	319765
ø32 end cap outlet	100	330421
Closing end cap	100	330243

ACO Easyline H50 Pack **NEW**

4 meters drainage system: 4 plastic channels, 4 gratings, 2 open end caps and 1 closed end cap

1. Front side

General Information

Name of the product,
4 meters drainage system,
applications

Image

Where install the product?



ACO Easyline H50

What's inside?

2. Back side

Available gratings

Range of gratings

Installation Instruction

SCAN the QR Code



New Features

4 sides connections, T&L shape
drainage line, double sealing joint
in all connections

Technical Information

Dimension of the channel

General Information

What's inside?

ACO Easyline is a versatile, practical and easy to use channel, even to install by yourself. It is simple to use it thanks to the NEW PACK where it is included all the necessary to create the drainage line. The pack is compact, easy to carry and it allows to see and touch the products inside.

...Perfect solution for your drainage line

ACO Easyline H50 Pack

NEW

Product information

- The pack contains:
 - 4 plastic channels, 4 gratings, 2 open end caps, 1 closed end cap
- 4 side connections each channel
- Plastic rail 5mm thickness
- Gratings load class: A 15, B 125
- Built-in fixing system
- Available in Black and Grey color



ACO Easyline H50 Pack BLACK

Grating Type	Load Class	Slot [mm]	Dimensions			Pc/Pal [n.]	Artic. Num.
			Length [mm]	Width [mm]	Height [mm]		
PP-PE	A 15	8	1000	125	50	56	330300
Galvanized steel	A 15	8	1000	125	50	56	330302
Stainless steel	A 15	8	1000	125	50	56	330306
Ductile iron	B 125	6	1000	125	50	56	330312
DESIGN GRATING Galvanized Steel SLIM	A15	5	1000	125	50	56	330304
DESIGN GRATING Stainless Steel SLIM	A15	5	1000	125	50	56	330308

ACO Easyline H50 Pack GREY

12

Grating Type	Load Class	Slot [mm]	Dimensions			Pc/Pal [n.]	Artic. Num.
			Length [mm]	Width [mm]	Height [mm]		
PP-PE	A 15	8	1000	125	50	56	330400
Galvanized steel	A 15	8	1000	125	50	56	330402
Stainless steel	A 15	8	1000	125	50	56	330406
Ductile iron	B 125	6	1000	125	50	56	330410
DESIGN GRATING Galvanized Steel SLIM	A15	5	1000	125	50	56	330404
DESIGN GRATING Stainless Steel SLIM	A15	5	1000	125	50	56	330408



ACO Easyline H90

The Next Generation of plastic
drainage systems



ACO Easyline H90

The Next Generation Channel

Versatile. Practical. Easy to assemble.
Easy to assemble.

3

Drainage systems are becoming more and more important also in private spaces and **ACO Easyline H90** offers a drainage solution for every situation and requirement.

This innovative channel is suitable for drainage in areas such as terraces and balconies, patio, garages and residential developments. This is possible thanks to new technical details, such as the new side connections which make it easy to install.

ACO Easyline H90 is available in a wide range of standard and design gratings perfectly integrated to the aesthetics of the surrounding environment.





ACO Easyline H90, The Innovative Design

A **complete system** with many advantages and possibilities

- Certified in accordance to EN1433
- Easy to assemble
- High mechanical and chemical resistance
- Light weight
- Easy to carry
- Total height 90mm
- Plastic rail 5mm thickness
- 3 standard gratings
- 4 design gratings
- Load class: A15, B125

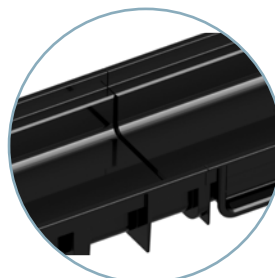
ACO Easyline H90, The Innovative Design



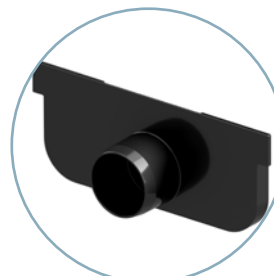
5 Innovative features for an easy installation

ACO Easyline H90 Advantages

- The new connections allow to create T and L shape without using special pieces and without discontinuity for the drainage line
- Practical to be assembled, male and female and sealing joint in the dedicated area
- Accessories that can be used in different positions and can be used to add drainage capacity
- The low height of the channel, only 90mm total



SEALING JOINT: the connection of the two channels create an area that can be used to position the sealent. The bituminous sealant can guarantee a perfect water tight drainage line.



OPEN END CAP can be installed in 5 different positions and it can be used in case of necessity to increase the capacity of water outflow.

Standard gratings

Available range

- Two colors of channel BLACK and GREY
- 3 standard gratings
- 4 design gratings

...Choose your set!

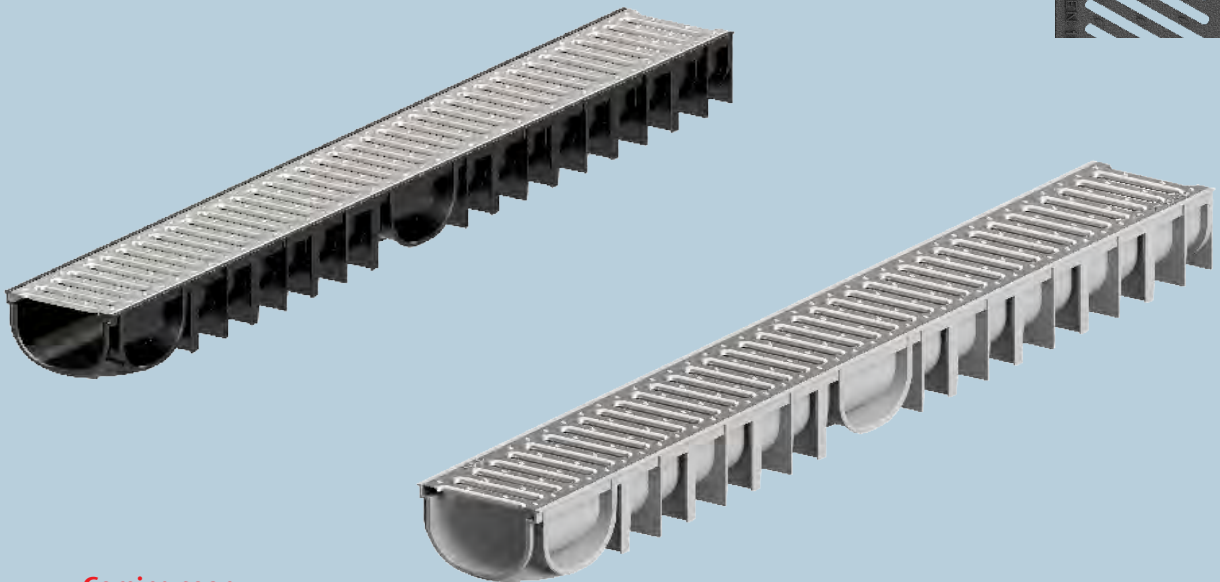
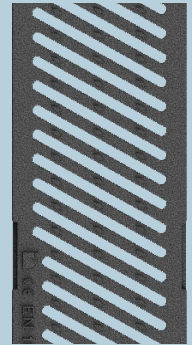
Galvanized
and Stainless
Steel



PP-PE



Ductile Iron



Coming soon

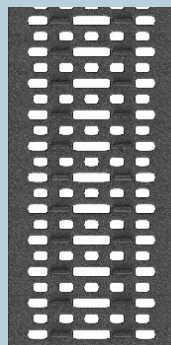


SLOT

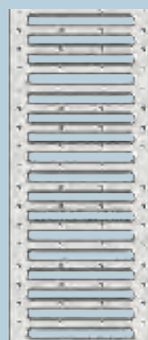
Coming soon



Ductile Iron



PP-GF



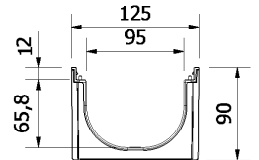
SLIM Galvanized
and Stainless Steel

Design gratings

ACO Easyline H90, Black

Product information

- Plastic Channel BLACK
- Channel internal size (WxH): 95 x 66 mm
- PP-PE rail
- Gratings load classes A 15, B 125
- Built-in fixing system
- Available in Black and Grey color



ACO Easyline H90 BLACK with grating

Grating Type	Load Class	Slot [mm]	Dimensions			Pc/Pal [n.]	Artic. Num.
			Length [mm]	Width [mm]	Height [mm]		
PP-PE	A 15	8	1000	120	90	72	853001
Galvanized steel	A 15	8	1000	120	90	72	853003
Stainless steel	A 15	8	1000	120	90	72	853007
Ductile iron	B 125	6	1000	120	90	72	853011
DESIGN GRATING Galvanized steel SLIM	A 15	5	1000	120	90	72	853005
DESIGN GRATING Stainless steel SLIM	A 15	5	1000	120	90	72	853009
DESIGN GRATING PP-GF	B 125	-	1000	120	90	72	853013

7

ACO Easyline H90 BLACK Kit

Description	Pc/Box [n.]	Artic. Num.
ø110 vertical outlet + ø50 end cap outlet + num. 1 closing end cap	50	853200
ø50 end cap outlet + num. 1 closing end cap	50	853202

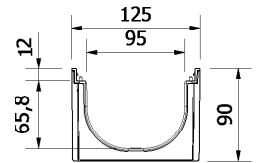
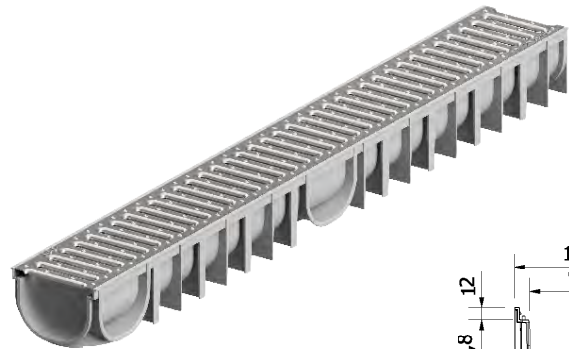
ACO Easyline H90 BLACK Accessories

Description	Pc/Box [n.]	Artic. Num.
ø110 vertical outlet	100	853204
ø50 end cap outlet	100	853206
Closing end cap	100	853208

ACO Easyline H90, Grey

Product information

- Plastic Channel GREY
- Channel internal size (WxH): 95 x 66 mm
- PP-PE rail
- Gratings load classes A 15, B 125
- Built-in fixing system
- Available in Balck and Grey color



ACO Easyline H90 GREY with grating

Grating Type	Load Class	Slot	Dimensions			Pc/Pal	Artic. Num.
			Length	Width	Height		
		[mm]	[mm]	[mm]	[mm]	[n.]	
PP-PE	A 15	8	1000	120	90	72	855002
Galvanized steel	A 15	8	1000	120	90	72	855004
Stainless steel	A 15	8	1000	120	90	72	855008
Ductile iron	B 125	6	1000	120	90	72	855012
DESIGN GRATING Galvanized steel SLIM	A 15	5	1000	120	90	72	855006
DESIGN GRATING Stainless steel SLIM	A 15	5	1000	120	90	72	855010

ACO Easyline H90 GREY Kit

Description	Pc/Box	Artic. Num.
	[n.]	
ø110 vertical outlet + ø50 end cap outlet + num. 1 closing end cap	50	855201
ø50 end cap outlet + num. 1 closing end cap	50	855203

ACO Easyline H90 GREY Accessories

Description	Pc/Box	Artic. Num.
	[n.]	
ø110 vertical outlet	100	855205
ø50 end cap outlet	100	855207
Closing end cap	100	855209