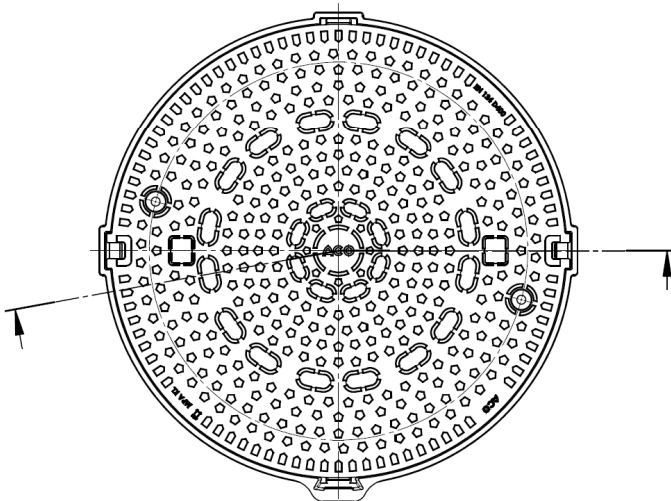
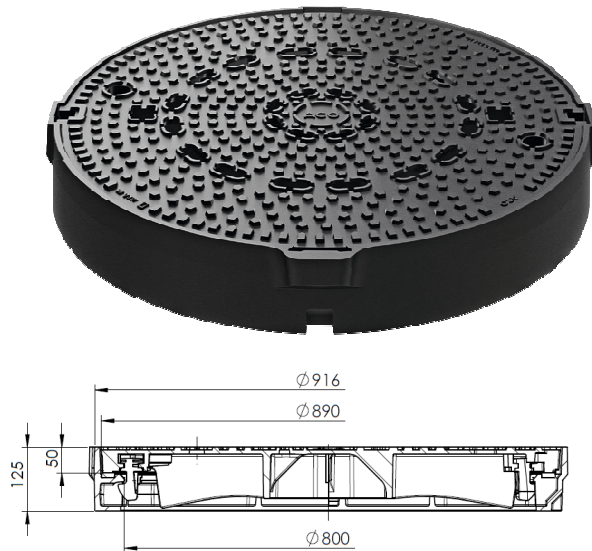


Specijalni šaht poklopci



MultiTop plus Lift – Clear opening 800 mm



Product description

ACO MultiTop Lift manhole top

Class D 400 according to DIN EN 124

MultiTop manhole cover, round, with two high-resistant, maintenance free, screwless, non-integrally cast and traffic-safe securing features made of high-strength plastic cover made of spheroidal graphite cast iron (GJS), weight approx. 75 kg

Lift frame, round

Liftable for height adjustment with PEWEPREN cushioning inserts
Clear opening 800 mm, height 125 mm, external diameter 915 mm, total weight approx. 124 kg

Product information

Variations

- Black hydro-based coating
- Logo cover

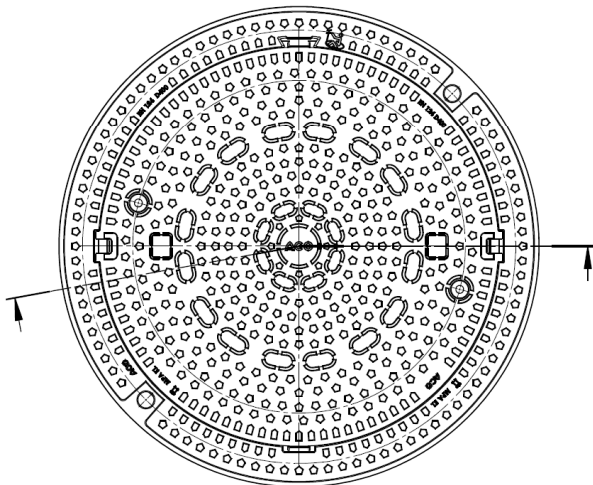
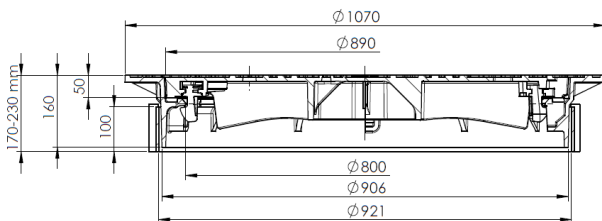
Accessories

- Opening tool **600643**
- Dirt bucket **57188**

- ✓ **EN 124**
- ↓ **D400**
- ⊘ **800 mm**
- △ **Anti slip**

Weight [kg]	Pcs./pallet	Ventilation holes	Black coating	Item no.
123	5	x	-	210608
125	5	-	-	210609

MultiTop plus Bituplan – Clear opening 800 mm



Product description

ACO MultiTop Bituplan manhole top

Class D 400 according to DIN EN 124

MultiTop manhole cover, round, with two high-resistant, maintenance free, screwless, non-integrally cast and traffic-safe securing features made of high-strength plastic cover made of spheroidal graphite cast iron (GJS), weight approx. 75 kg

Bituplan frame, round

with PEWEPREN cushioning inserts
Clear opening 800 mm, height 160 mm, external diameter 1070 mm, total weight approx. 174 kg

Product information

Variations

- Black hydro-based coating
- Logo cover

Accessories

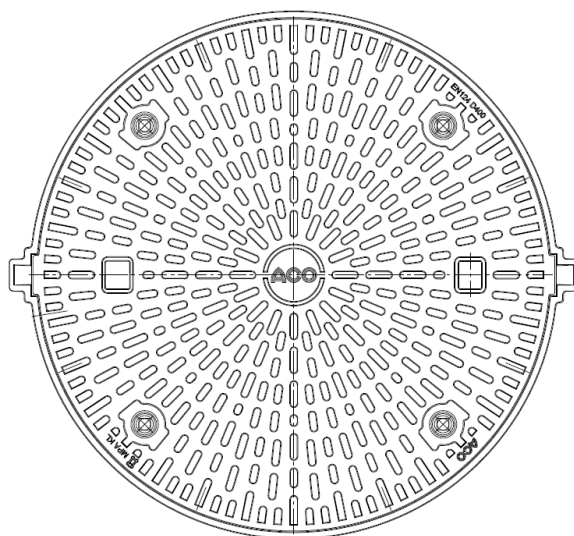
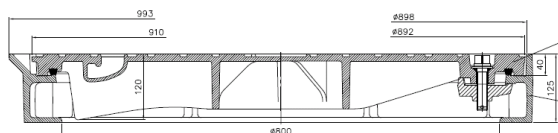
- Opening tool **600643**
- Dirt bucket **57188**
- Reusable installation shuttering **210132**

- ✓ **EN 124**
- ↓ **D400**
- ⊘ **800 mm**
- △ **Anti slip**

Weight [kg]	Pcs./pallet	Ventilation holes	Black coating	Item-no. w/o adapter ring
173	5	x	-	210405
175	5	-	-	210404

Item-nos for version with adapter ring on request

MultiTop plus protivpovratni– Svetli otvor 800 mm



Opis proizvoda

ACO MultiTop plus šaht poklopac osiguran od protivpovratnog toka Za klasu opterećenja D 400 skladu sa SRPS EN 124

MultiTop šaht poklopac, okrugli, sa 4 specijalna vijka za zaključavanje, sa zaptivkom otpornom na ulja i goriva, poklopac od livenog gvožđa sferoidni grafit (GJS), težina poklopca oko 78

Lift BEGU ram, okrugli

Svetli otvor 800 mm, visina 125 mm, spoljni prečnik 910/993 mm, sa unutrašnjom flanšom
Ukupna težina oko 128 kg

Dodatne informacije

Pribor

- Pribor za otvaranje **85518**
- Set za fiksiranje **57184**



EN 124



D400



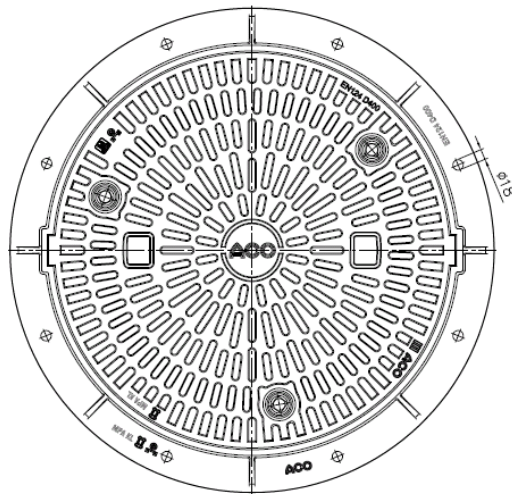
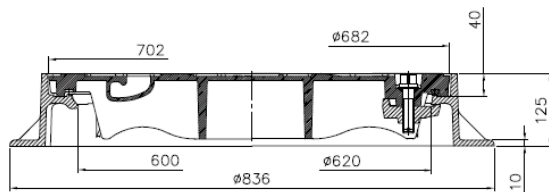
800 mm



Anti-theft

Težina [kg]	Kom/paleta	Ventilacioni otvori	Crni zaštitni sloj	Artikal br.
128	5	-	-	607178

MultiTop backflow safe



Product description

ACO MultiTop backflow safe

Class D 400 according to DIN EN 124

MultiTop manhole cover, round, with three special turnbuckle locking devices, with oil- and fuel-resistant sealing cover made of spheroidal graphite cast iron (GJS), weight approx. 45 kg

Fix flanged frame, round with anchoring devices, Clear opening 620 mm, height 100/125 mm, external diameter 835 mm, total weight approx. 92 kg

Product information

Accessories

- Opening tool **85518**



EN 124



D400



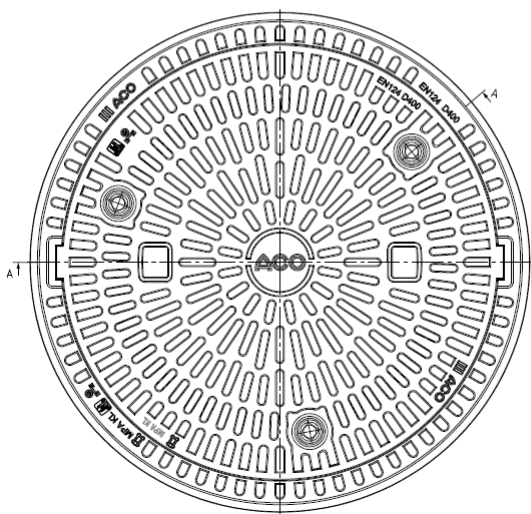
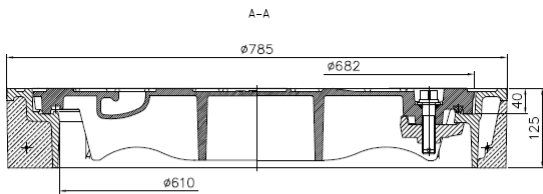
605mm



Anti-theft

Weight [kg]	Pcs./pallet	Ventilation holes	Frame height	Item no.
92	10	-	125 mm	603956
92	10	-	100 mm	603959

MultiTop surface waterproof



Product description

ACO MultiTop surface waterproof
Class D 400 according to DIN EN 124
MultiTop manhole cover, round,
with three special turnbuckle locking devices,
with oil- and fuel-resistant sealing
cover made of spheroidal graphite cast iron
(GJS),
weight approx. 45 kg

Lift BEGU frame, round
Clear opening 620 mm, height 125 mm,
external diameter 785 mm,
total weight approx. 120 kg

Product information

Variations

- Black hydro-based coating

Accessories

- Opening tool **85518**

✓ **EN 124**

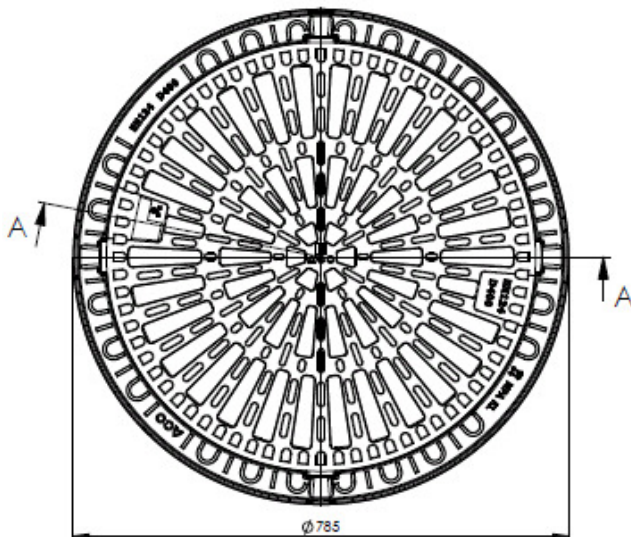
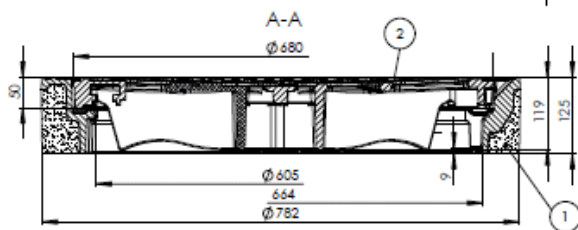
↓ **D400**

⊘ **605mm**

⬡ **Anti-theft**

Weight [kg]	Pcs./ pallet	Ventilation holes	Black coating	Item no.
120	10	-	-	604491
120	10	-	X	604492

CityTop P inlet grating



EN 124



C250 / D400



605mm

Product description

ACO CityTop P inlet grating

Class C250 or D 400 according to DIN EN 124

CityTop P grating, round, made of cast iron, slot width 31 mm, gauge 10 mm, with two maintenance free, screwless, non-integrally cast and traffic-safe securing features made of high-strength plastic,

Lift frame, round, height 125 mm, external diameter 785 mm, max. bearing pressure 3,6 N/mm², inlet section 1.198 cm², total weight approx. 103-105 kg

Product information

Accessories

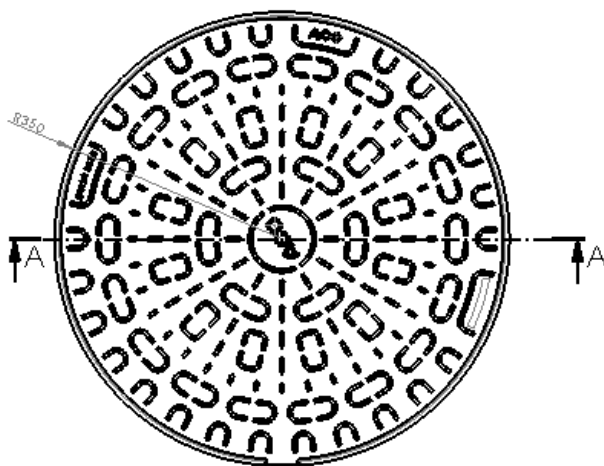
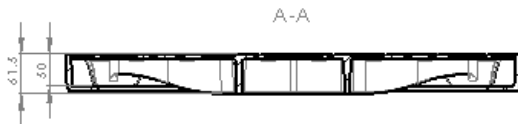
- Operating tool **600643**
- Funnel with bucket support **4750.00.00**

Advantages

- Safe positioning of the cover due to an additional stabilization groove
- Concrete C 35/45 is conforming to the highest classification of exposure conditions with freeze-thaw and deicing resistance
- Durable PEWEPREN cushioning insert

Load Class	Weight [kg]	Pcs./pallet	Item-no.
C250	109	10	1204831
D400	109	10	1204832

CityTop S B125 L-frame



Product description

ACO CityTop S B125 manhole cover

Class B125 according to DIN EN 124

CityTop S manhole cover, round,
without ventilation holes
made of spheroidal graphite cast iron (GJS),
weight approx. 19 kg

L-frame, round, height 61,5 mm
external diameter 700 mm,
max. bearing pressure 3,6 N/mm²,
total weight approx. 30 kg

Product information

Variations

- Black hydro-based coating
- Logo cover

Accessories

- Operating tool 600643

Advantages

- Easy to handle light weight cover with 19 kg

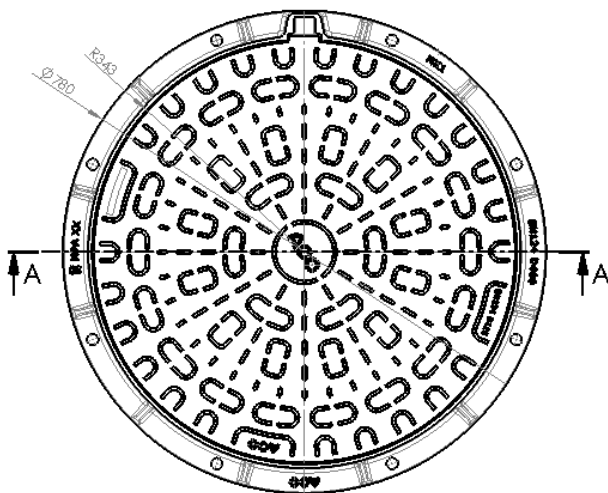
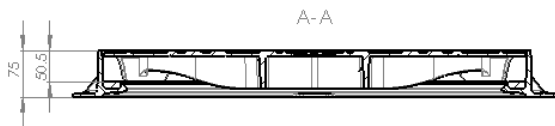
✓ **EN 124**

↓ **B125**

⊘ **605mm**

Weight [kg]	Pcs./pallet	Ventilation holes	Black coating	Item-no.
30	16	-	-	1203886
30	16	-	X	1203887

CityTop S B125 Fix 75



Product description

ACO CityTop S B125 manhole cover

Class B125 according to DIN EN 124

CityTop S manhole cover, round,
without ventilation holes
made of spheroidal graphite cast iron (GJS),
weight approx. 19 kg

Fix flanged frame, round, height 75 mm
external diameter 780 mm,
max. bearing pressure 3,6 N/mm²,
total weight approx. 38 kg

Product information

Variations

- Black hydro-based coating
- Logo cover

Accessories

- Operating tool 600643

Advantages

- Easy installation also in case of refurbishment with the 75 mm fix frame
- Durable PEWEPREN cushioning insert
- Easy to handle light weight cover with 19 kg

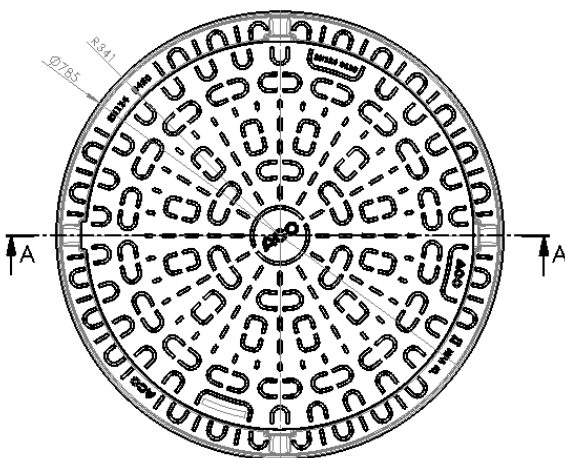
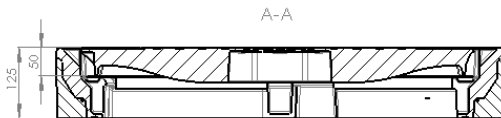
✓ **EN 124**

↓ **B125**

⊘ **605mm**

Weight [kg]	Pcs./pallet	Ventilation holes	Black coating	Item-no.
38	16	-	-	1203888
38	16	-	X	1203889

CityTop S B125 BEGU



Product description

ACO CityTop S B125 manhole cover

Class B125 according to DIN EN 124

CityTop S manhole cover, round,
without ventilation holes
made of spheroidal graphite cast iron (GJS),
weight approx. 19 kg

BEGU-frame, round, height 125 mm
external diameter 785 mm,
max. bearing pressure 3,6 N/mm²,
total weight approx. 85 kg

Product information

Variations

- Logo cover

Accessories

- Operating tool **600643**

Advantages

- Durable PEWEPREN cushioning insert
- Easy to handle light weight cover with 19 kg

✓ **EN 124**

↓ **B125**

⊘ **605mm**

Weight [kg]	Pcs./pallet	Ventilation holes	Black coating	Item-no.
85	10	-	-	1203886

Logo Covers

All MultiTop plus, CityTop P and CityTop S cover could be personalized with company / municipality logos or inscriptions.

We only have to change an internal plate within the base pattern.

You only have to pay a one-time charge of EUR 3.000.

This includes our engineering service and the pattern of the logo.

In general we design the logo for the usage of ventilated and non-ventilated covers.

But please note: The pattern of each product family is not interchangeable with others.

E.g. logo for CityTop P could not be used for CityTop S and vice versa.

The item price for the personalized cover is the same as for the accordingly standard cover.

On the following pages you'll find some samples and references of logo covers.





City of Plovdiv, BG



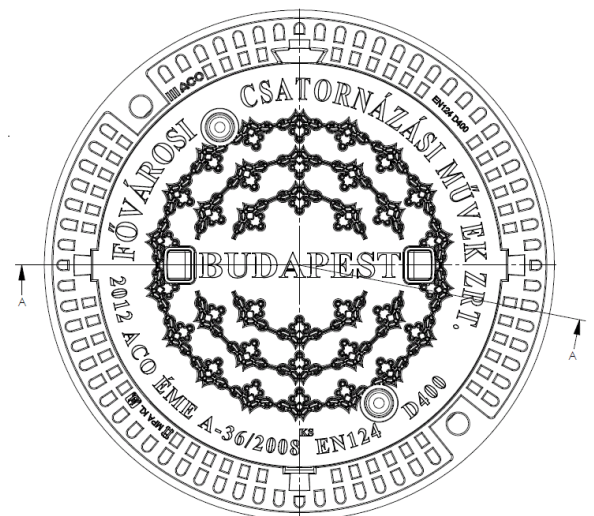
City of Varna, BG



Puma Headquarter, GER



Tunel Plasina, HR



City of Budapest, HU

