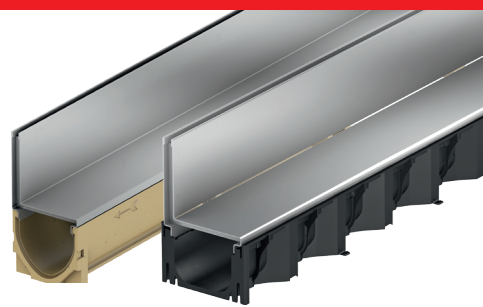
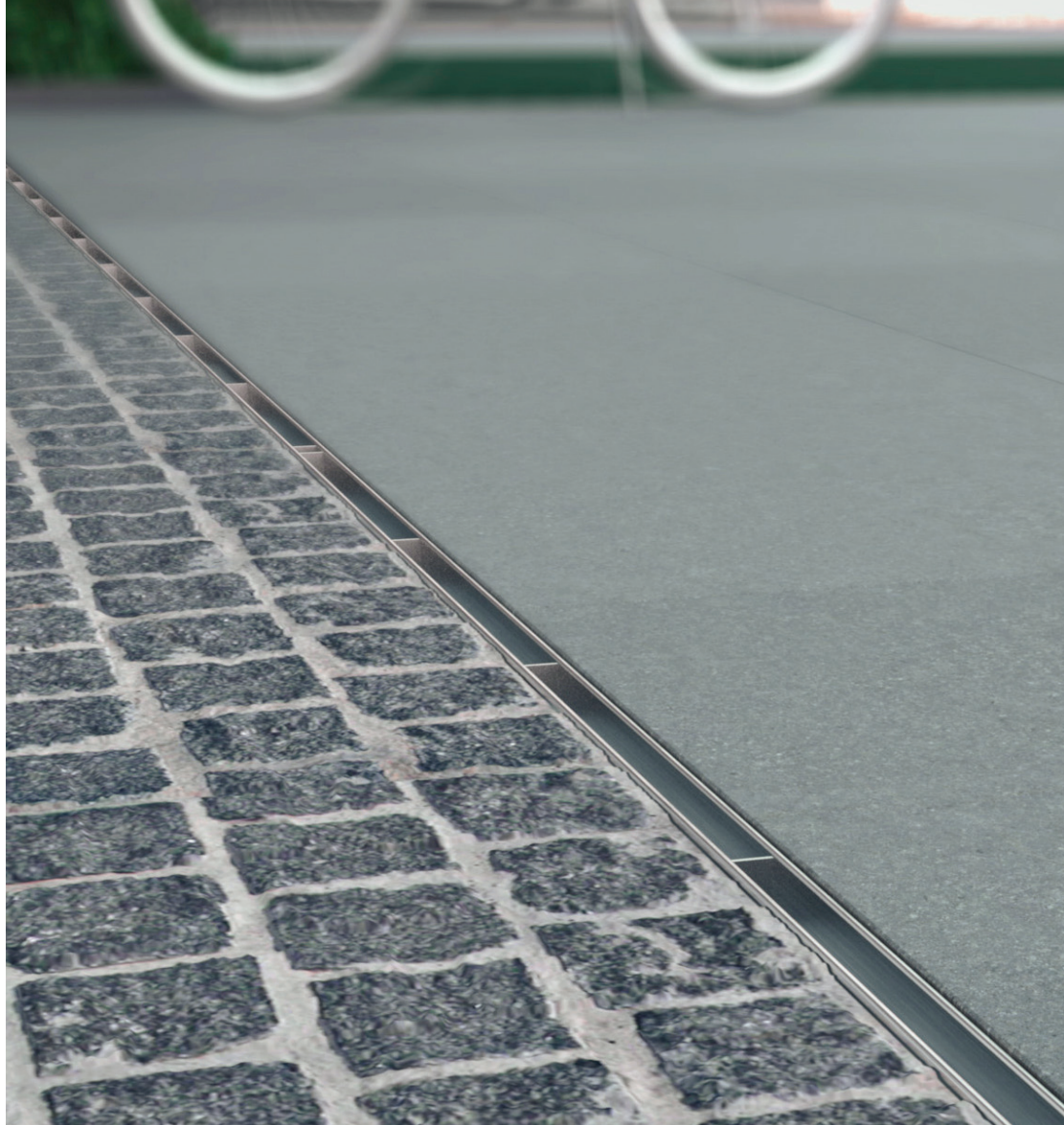


Line drainage



ACO Self® Brickslot



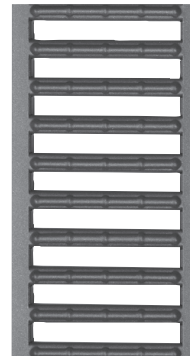
Slot grating
Galvanized steel



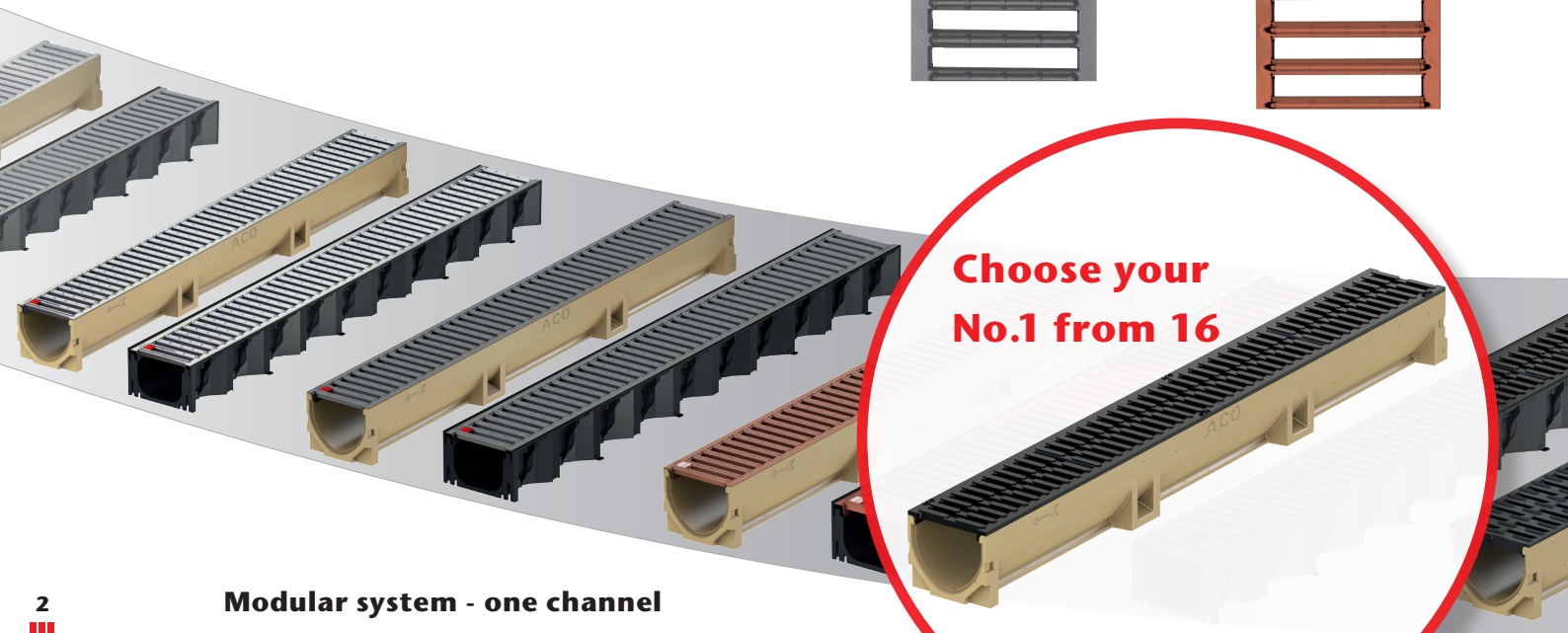
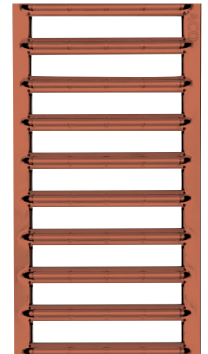
Slot grating
Stainless steel electropolished



Slot grating powder coated
Color: anthracite



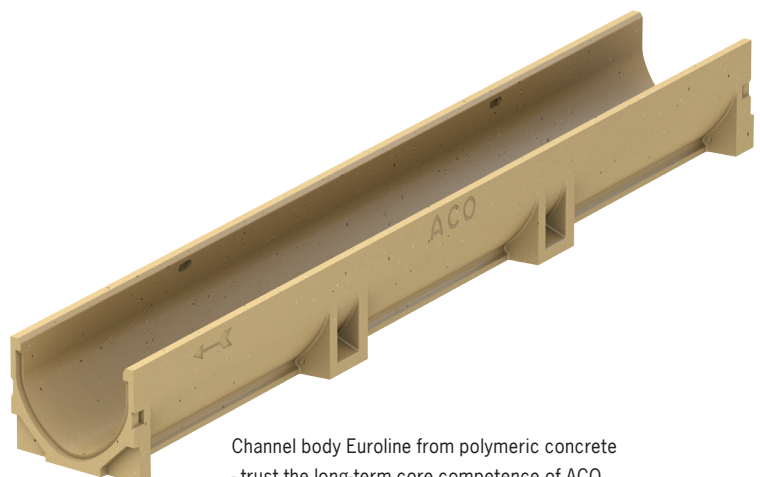
Slot grating powder coated
Color: Terracotta



Modular system - one channel for each application

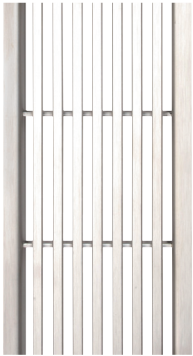
The ACO Self® drainage was specially developed for private applications and combines best quality with high level of design. Gratings are car drivable and suitable for all drainage applications around the house.

Gratings are made from different materials. It is possible to choose from galvanized steel, powder coated steel, stainless steel, cast iron or plastic. Various design options are given by this portfolio. The channel body are made of plastic or polymer concrete. Our modular system offers solution for each individual situation.



Channel body Euroline from polymeric concrete
- trust the long-term core competence of ACO

Wedge wire grating
Stainless steel



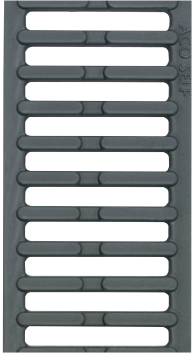
Brickslot
Stainless steel and galvanized steel



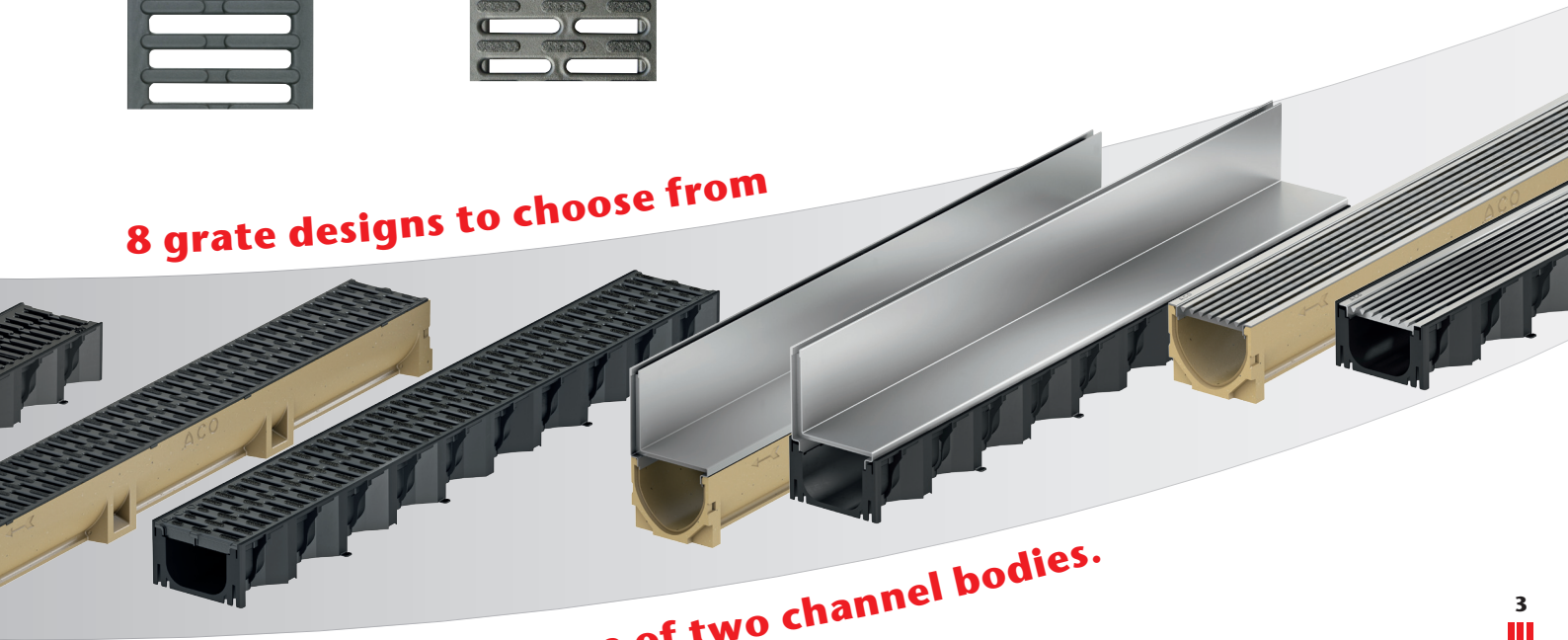
Plastic grating with antislip
Microgrip



Cast iron grating



8 grate designs to choose from



combine them with one of two channel bodies.



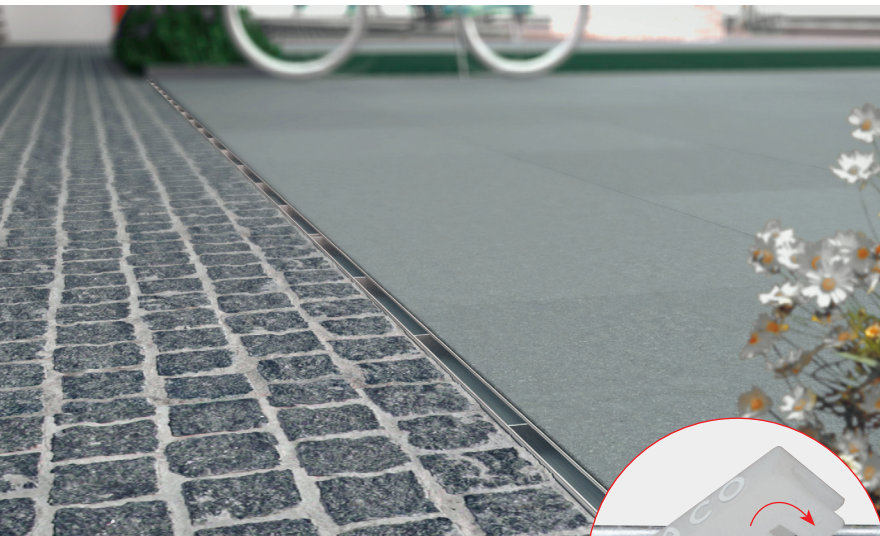
Channel body Hexaline
- ACO quality from plastic

Brickslot Stainless steel and galvanized steel

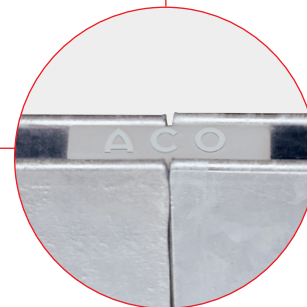
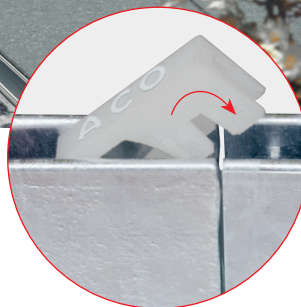
New Brickslot grating allows a very unobtrusive, discreet and stylish drainage in paved areas. It combines effective drainage and high level of the design.

Brickslot gratings are available in galvanized steel and stainless steel.

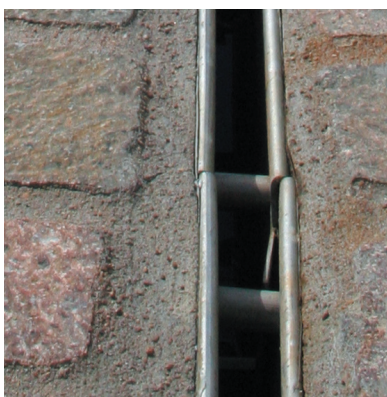
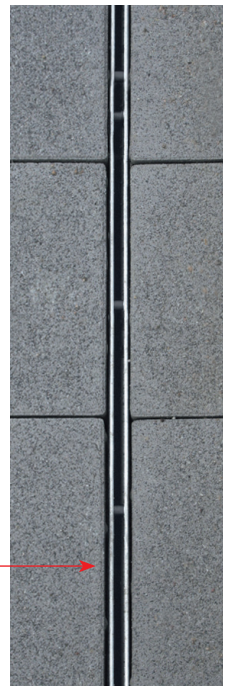
New connector clip ensures a harmonious look. Brickslots are optimally aligned in one simple step during installation. Straight line ensures optimal performance.



The narrow slot channel drainage is discrete in the overall appearance.



Two adjacent Brickslot ends can be connected via a connector clip. Straight line guaranteed.



Adjacent Brickslots without connector clip



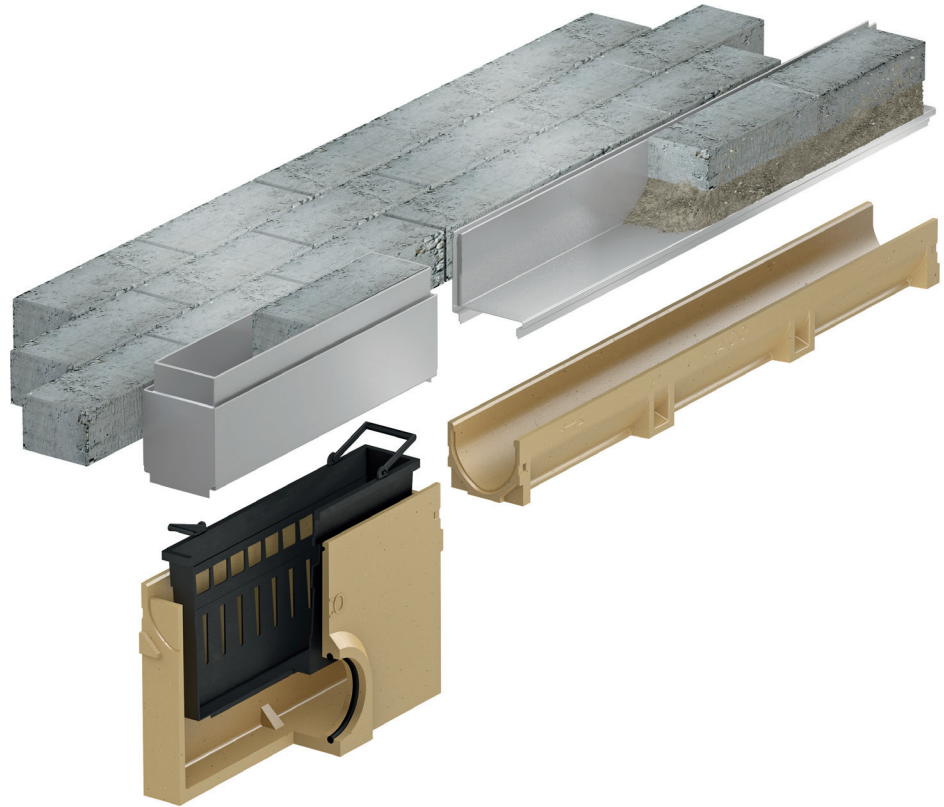
Brickslots with connector clip

Installation and maintenance of Self slot channel

Maintenance of the ACO Self® channels with Brickslot is performed via a revision element that is placed directly above the outlet. Depending on the system there is a half-meter or 15-cm revision element available. Revision element should be opened and channel should be cleaned approx. twice a year. Please adjust cleaning frequency to local conditions or provide a second revision element at the other end of the line to facilitate cleaning.

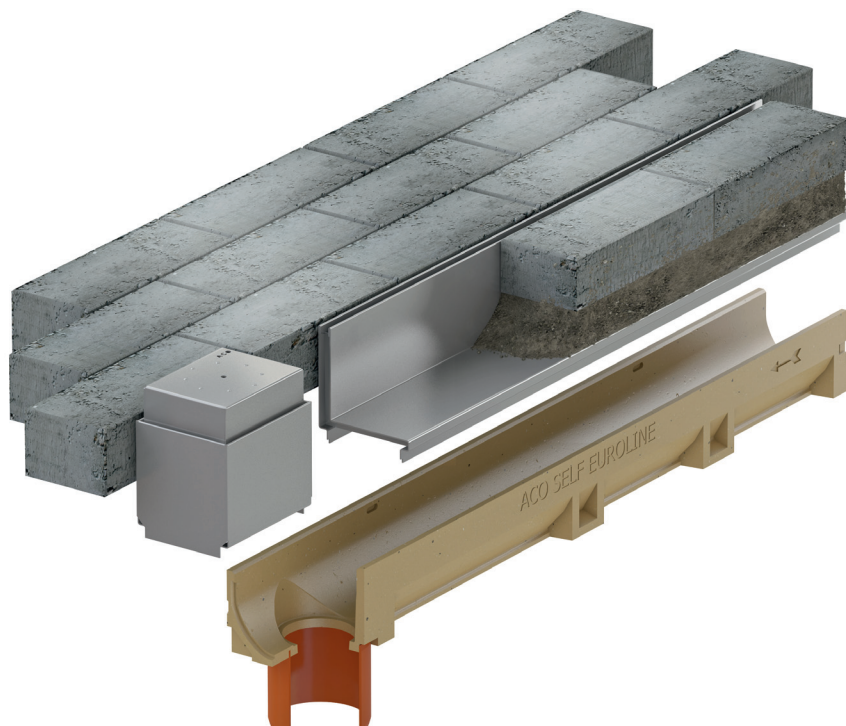
ACO Self® slot channel with inspection element and sump unit

The half-meter revision element fits perfectly with the overall appearance, because the surrounding pavement can also be installed into the tray. Continuous drainage slot guarantees drainage of water over the inspection element. This can be easily opened with two lifting hooks. The inspection element is placed directly on the sump therefore system can be efficiently cleaned with just a dirt bucket.






ACO Self® slot channel with revision element

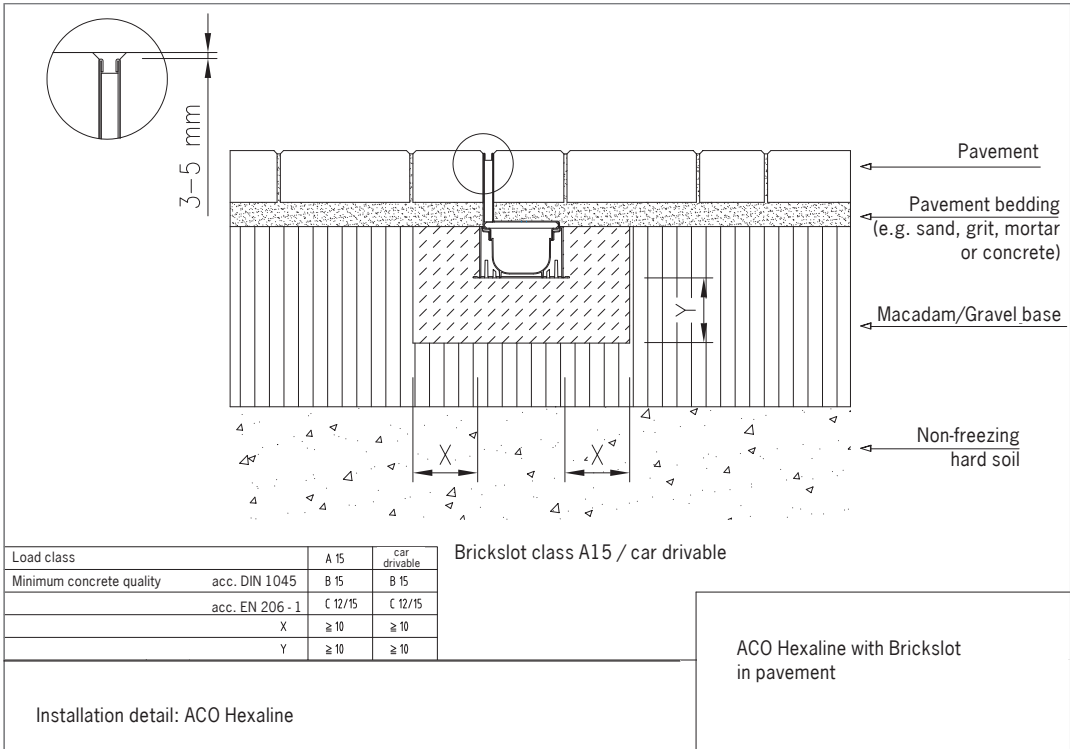
Small inspection element in combination with a 850 mm Brickslot is applicable on the channel body Hexaline or Euroline with outlet connection. The tray can be used with the bottom up as a closed cover. For a particularly inconspicuous solution the tray can be filled in upside-down position with a surrounding surface material.



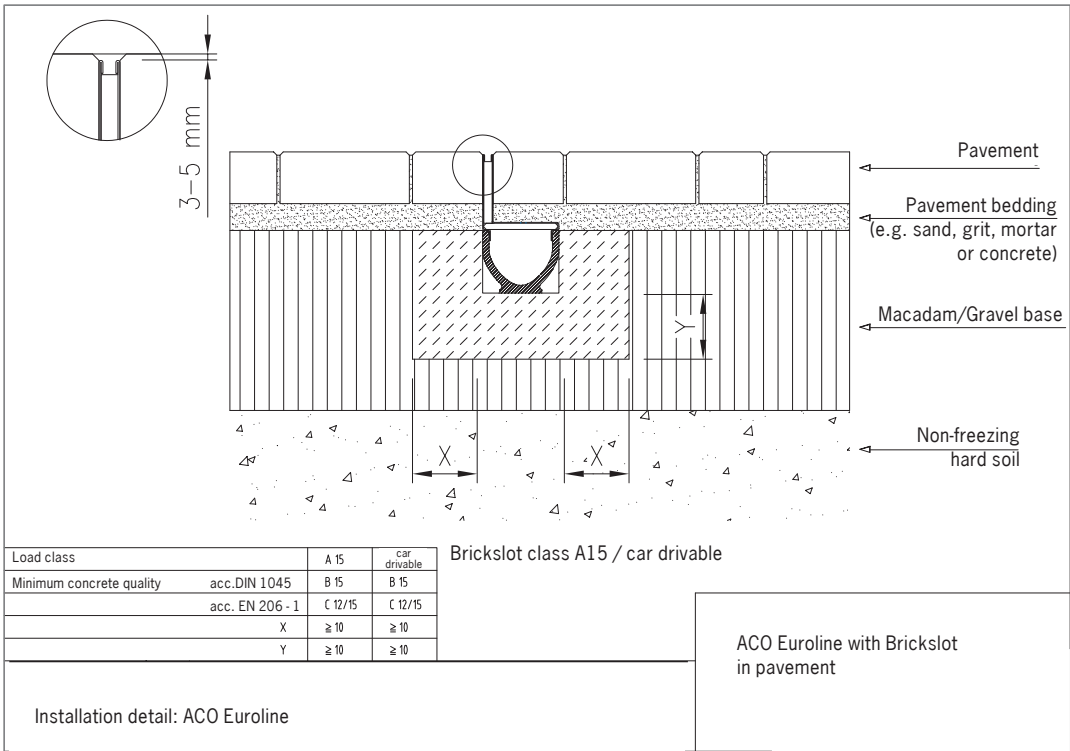
System overview

| Image | Description | Height [mm] | Width [mm] | Part No. |
|---|---|-------------|------------|---------------|
| ACO Self® Brickslot | | | | |
|  | Brickslot Slot height 40 mm, Galvanized steel | 1.000 | 118 | 415822 |
| | | 850 | 118 | 415824 |
| | | 500 | 118 | 415846 |
| | Inspection element Height 40 mm, Galvanized steel | 500 | 118 | 415823 |
| | | 150 | 118 | 415825 |
| | Brickslot Slot height 40 mm, Stainless steel | 1.000 | 118 | 415826 |
| | | 850 | 118 | 415828 |
| | | 500 | 118 | 415847 |
| | Inspection element Height 40 mm, Stainless steel | 500 | 118 | 415827 |
| | | 150 | 118 | 415829 |
|  | Brickslot Slot height 65 mm, Galvanized steel | 1.000 | 118 | 415830 |
| | | 850 | 118 | 415832 |
| | | 500 | 118 | 415848 |
| | Inspection element Height 65 mm, Galvanized steel | 500 | 118 | 415831 |
| | | 150 | 118 | 415833 |
| | Brickslot Slot height 65 mm, Stainless steel | 1.000 | 118 | 415834 |
| | | 850 | 118 | 415836 |
| | | 500 | 118 | 415849 |
| | Inspection element Height 65 mm, Stainless steel | 500 | 118 | 415835 |
| | | 150 | 118 | 415837 |
|  | Brickslot Slot height 105 mm, Galvanized steel | 1.000 | 118 | 415838 |
| | | 850 | 118 | 415840 |
| | | 500 | 118 | 415850 |
| | Inspection element Height 105 mm, Galvanized steel | 500 | 118 | 415839 |
| | | 150 | 118 | 415841 |
| | Brickslot Slot height 105 mm, Stainless steel | 1.000 | 118 | 415842 |
| | | 850 | 118 | 415844 |
| | | 500 | 118 | 415851 |
| | Inspection element Height 105 mm, Stainless steel | 500 | 118 | 415843 |
| | | 150 | 118 | 415845 |
| — | Lifting tool for Brickslot inspection element 0,5 m | | | 415924 |

ACO Self® Hexaline with Brickslot - installation in pavement



ACO Self® Euroline with Brickslot - installation in pavement





ACO Industries k.s.

Havlickova 260
582 22 Pribyslav
Czech Republic

www.aco.com

The ACO Group – a strong family you can build on.

ACO Self® Brickslot. Subject to technical changes without notice. All reasonable care has been taken in compiling the information in this document. All recommendations and suggestions on the use of ACO products are made without guarantee since the conditions of use are beyond the control of the Company. It is the customer's responsibility to ensure that each product is fit for its intended purpose and that the actual conditions of use are suitable. This brochure and any advice is provided free of charge and accordingly on terms that no liability (including liability for negligence) will attach the Company or its servants or agents arising out of or in connection with or in relation to this brochure or any such advice. Any goods supplied by the Company will be supplied solely upon its standard conditions of sale, copies of which are available on request. The Company's policy of continuous product development and improvement renders specifications liable to modification. Information provided in this brochure is therefore subject to change without prior notification.