

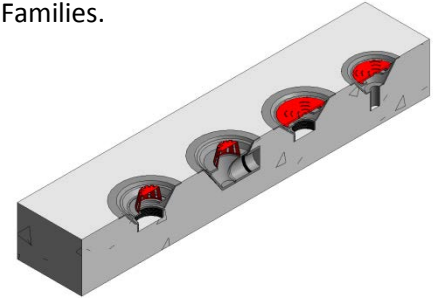
## ACO HP Rainwater Outlets For Flat Roof and other areas

### User Guide for Autodesk Revit files

#### The ACO HP Rainwater Outlets Range

ACO HP Rainwater Outlets range is divided into a number of individual Revit Families.

- ACO HP Rainwater Vertical Spigot Outlets
- ACO HP Rainwater 45 Degree Outlets
- ACO HP Rainwater 90 Degree Outlets
- ACO HP Rainwater for Balconies & Parapets
- ACO HP Rainwater Outlets for Refurbishment

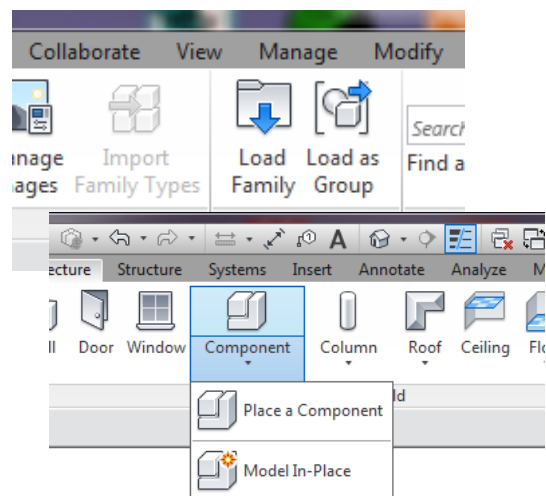


Each range has (where applicable) options for Spigot or Screw connections, and also for Dome or Flat Grates

#### Loading ACO HP Rainwater Outlets files into your project

Each system is modelled as a generic family that can simply be loaded into your project.

1. Download the relevant ACO HP Rainwater Outlets file and save it to a suitable location.
2. Open your project and navigate to an appropriate view.
3. Navigate to the “insert” icon on the Revit ribbon and click “Load Family”.
4. Select the ACO HP Rainwater Outlets file you saved earlier.
5. The file can now be placed into your project. Navigate to the “Architecture / Component” icons on the Revit ribbon and click “Place a Component”



**Note that all the ACO HP Rainwater Outlets files are “floor” based Items.**

ACO Building Drainage

A Division of ACO Technologies plc

ACO Building Drainage  
ACO Business Centre  
Caxton Road  
Bedford  
MK41 0LF

Tel: 01462 816666  
Fax: 01462 851490

email: [abdtechnical@aco.co.uk](mailto:abdtechnical@aco.co.uk)  
Website: [www.acobd.co.uk](http://www.acobd.co.uk)

## Using the ACO HP Rainwater Outlets Range

### Step 1: Select the required Outlet type

ACO HP Rainwater Outlets range has a variety of outlet diameters, in a range of orientations.

- Vertical Outlets are considered general purpose and connect directly to PVC-u “O” ring socket pipe.
- Two-Way outlets are used at the junction of roofs and parapet walls and can be orientated in two directions.
- 45° and 90 ° outlets allow connection to more complex pipe runs.

### Step 2: Select the required grate

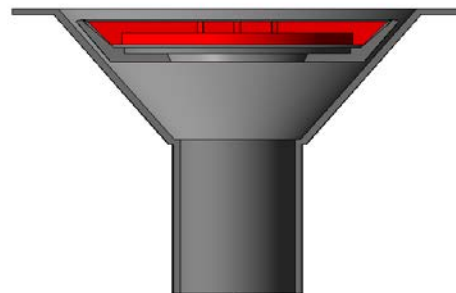
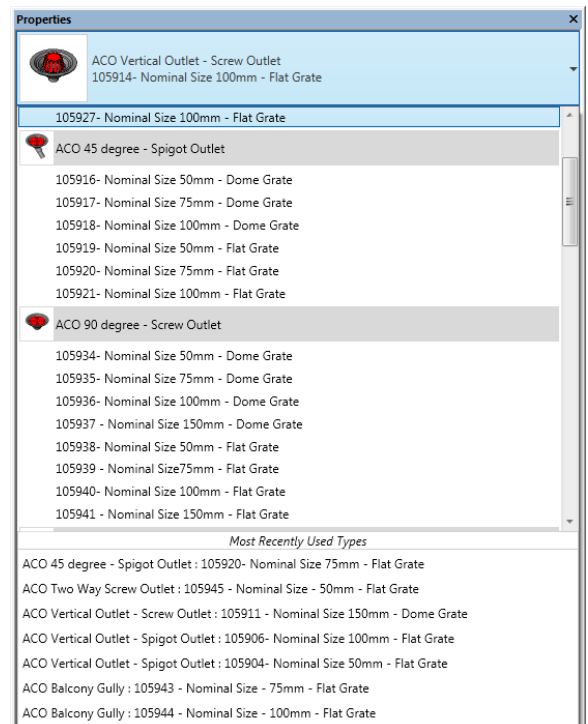
ACO HP Rainwater Outlets are available with either Domed or Flat grates.

Flat grates are used where either vehicles or pedestrian traffic is likely.

### Step 3: Select the connection type

ACO HP Rainwater Outlets are available with either spigot or screw connections. Screw connections are recommended where the connection occurs within the thickness of the slab.

Threaded outlets have a female parallel thread to BS 21: 1985 and when used in conjunction with ACO ABS threaded adaptors form a completely watertight seal when screwed home into the outlet body.



### Manipulation:

The family components can simply be placed and arranged using the standard Revit “modify” tools of Move, Copy, Rotate and Align.

ACO Building Drainage

A Division of ACO Technologies plc

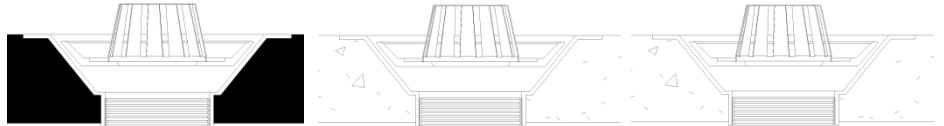
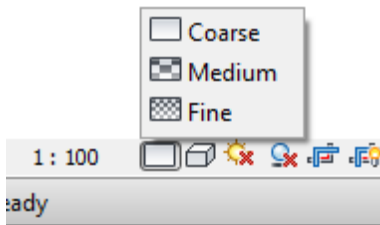
ACO Building Drainage  
ACO Business Centre  
Caxton Road  
Bedford  
MK41 0LF

Tel: 01462 816666  
Fax: 01462 851490

email: [abdtechnical@aco.co.uk](mailto:abdtechnical@aco.co.uk)  
Website: [www.acobd.co.uk](http://www.acobd.co.uk)

## Sectional Accuracy

ACO HP Rainwater Outlets family components are designed with varying levels of detail, which can be accessed via the Revit “Detail Level” function.

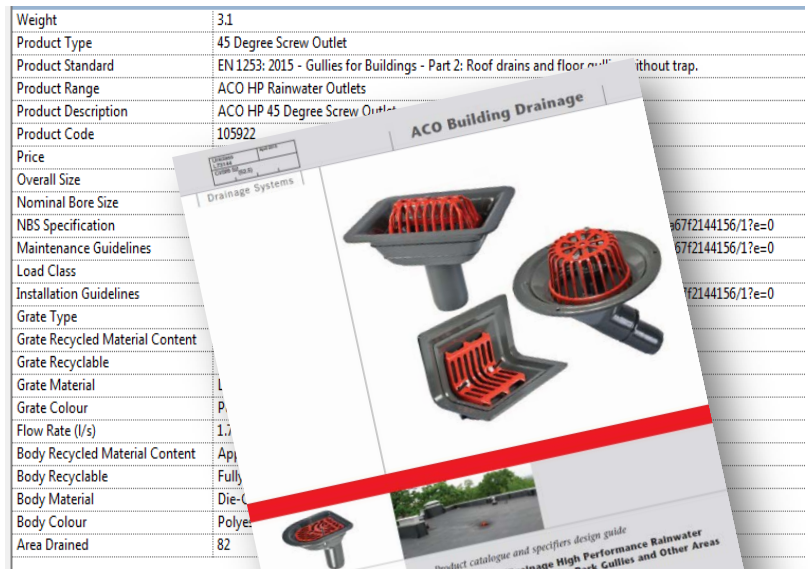
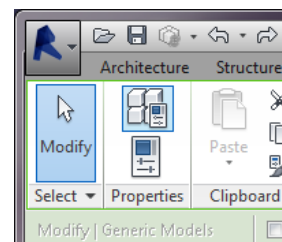


## Type Properties

The ACO HP Rainwater Outlets file has a collection of useful information embedded with it, including site installation and operations and maintenance details.

This information, along with much more is stored within the files or available through hyperlinks within the component type properties.

1. To access the information within a component, simply select the item and click the “Type Properties” icon on the Revit ribbon at the top of the dialogue.
2. The “Type Properties” information screen will now display. Simply scroll up and down the screen to find the information you require.



## Materials Library & Notes

The ACO HP Rainwater Outlet files contain materials that are already pre-loaded into the components. The files can be pre-loaded into your company template.

ACO HP Rainwater Outlets families have been created in Revit 2014

ACO Building Drainage

A Division of ACO Technologies plc

ACO Building Drainage  
ACO Business Centre  
Caxton Road  
Bedford  
MK41 0LF

Tel: 01462 816666  
Fax: 01462 851490

email: [abdtechnical@aco.co.uk](mailto:abdtechnical@aco.co.uk)  
Website: [www.acobd.co.uk](http://www.acobd.co.uk)